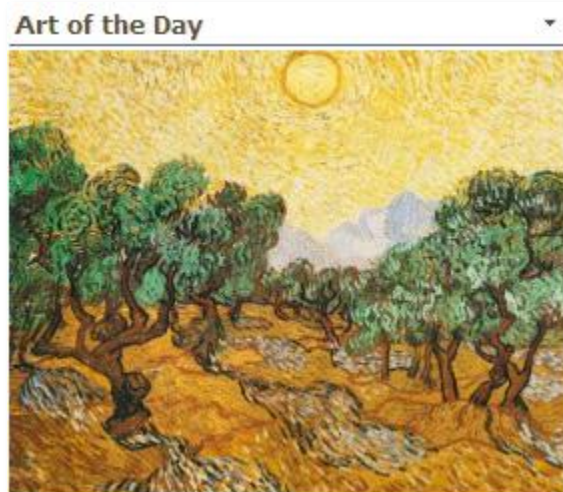

Art Collection

Web Part

© AMREIN ENGINEERING AG

Version 1.0

March 2012



Description

The Art Collection Web Part displays a randomly selected Van Gogh painting every day or on every page visit. The Web Part can be used with Windows Sharepoint Services V3, MOSS.2007 and Sharepoint 2010.

Prerequisites

Before you attempt to install the solutions you need to make sure that you have the following installed on your server(s):

- Microsoft Office SharePoint Server 2007, WSS 3.0 or Sharepoint 2010

Installation

Manual Installation

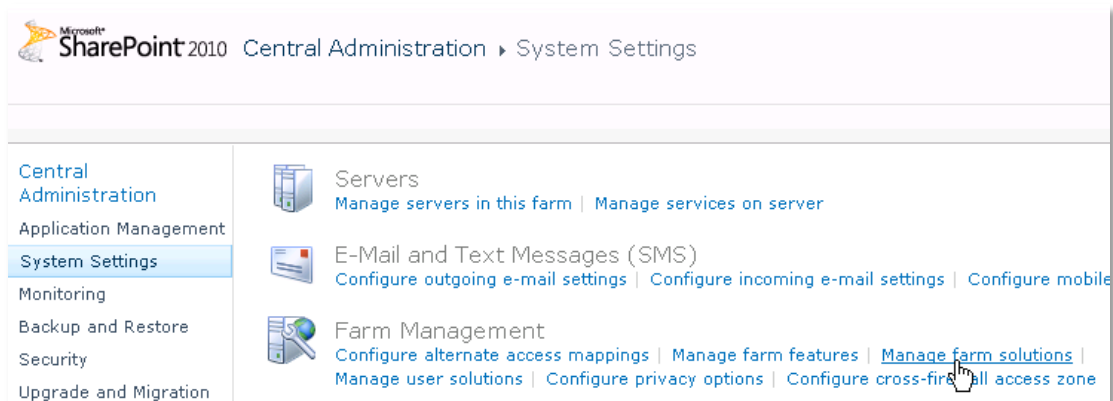
1. download and unpack the **AEArtCollectionWebpart.zip** file.
The ZIP archive contains the ArtCollectionWebpart.dll and the AEArtCollection.webpart files.
2. drop the **AEArtCollectionWebpart.dll** either into the SPS web application bin directory or into the GAC of your Sharepoint server (c:\windows\assembly).
3. add the following line to the "<SafeControls>" section of your Web.Config file.
Please make sure that the line is added as one single line (no line breaks):

```
<SafeControl Assembly="AEArtCollectionWebpart, Version=1.0.0.0, Culture=neutral,
PublicKeyToken=4c06a73dde08d461" Namespace="AEArtCollectionWebpart" TypeName="*"
Safe="True" />
```

4. from the top site go to "Site Actions/Site Settings/Modify All Site Settings/Galleries/Web Parts"
5. use the "Upload" menu option to upload the **AEArtCollection.webpart** file.

Automatic Installation

1. Unpack the **AEArtCollectionWebpart.wsp** and **Install.bat** (MOSS 2007 or WSS3.0) or **install2010.bat** (SP 2010) files from the Zip Archive and place the 2 files onto your Sharepoint Server.
2. Add the Solution by either running **Install.bat** (for Sharepoint 2007) or **install2010.bat** for Sharepoint 2010) by manually entering:
`stsadm -o addsolution -filename AEArtCollectionwebpart.wsp`
3. Deploy the solution by navigating with your browser to "Central Administration > System Settings > Farm Management > Manage farm solutions":



4. You should now see the **AEArtCollectionWebpart.wsp** in the farm's solution store:

	Name	Status	Deployed To
Central Administration	aeartcollectionwebpart.wsp	Not Deployed	None
Application Management	aebirthdaywsswebpart.wsp	Deployed	http://ae-web2-cd:35223/...
System Settings	aeblogrollupmysitewebpart.wsp	Deployed	http://ae-web2-cd:35223/...
Monitoring	aeblogrollupmysitewebpart.wsp	Deployed	http://ae-web2-cd:35223/...
Backup and Restore	aealendarlistviewwebpart.wsp	Deployed	http://ae-web2-cd:35223/...

Click on "AEArtCollectionWebpart.wsp" to deploy the solution:

Microsoft SharePoint 2010 Central Administration > Solution Properties

Central Administration

Application Management

System Settings

Monitoring

Backup and Restore

Security

Upgrade and Migration

General Application Settings

Deploy Solution Remove Solution Back to Solutions

Name: aeartcollectionwebpart.wsp

Type: Core Solution

Contains Web Application Resource: Yes

Contains Global Assembly: Yes

Contains Code Access Security Policy: No

Deployment Server Type: Front-end Web server

Deployment Status: Not Deployed

Deployed To: None

5. Proceed to activate the feature by navigating to the "Site Actions/Site Settings" page in your top-level site:

Test2010 > Site Settings

Home

Pictures

Test Pictures

Documents

Site Pages

Shared Documents

Lists

Calendar

Tasks

Nice Restaurants

AdvWorksEmployees

Discussions

Team Discussion

Recycle Bin

All Site Content

Users and Permissions

People and groups

Site permissions

Site collection administrators

All people

Galleries

Site columns

Site content types

Web parts

List templates

Master pages

Themes

Solutions

Site Administration

Regional settings

Site libraries and lists

User alerts

RSS

Search and offline availability

Sites and workspaces

Workflows

Workflow settings

Related Links scope settings

Term store management

Look and Feel

Title, description, and icon

Quick launch

Top link bar

Tree view

Site theme

Site Actions

Manage site features

Save site as template

Reset to site definition

Delete this site

Site Web Analytics reports

Site Collection Web Analytics reports

Site Collection Administration

Search settings

Search scopes

Search keywords

FAST Search keywords

FAST Search site promotion and demotion

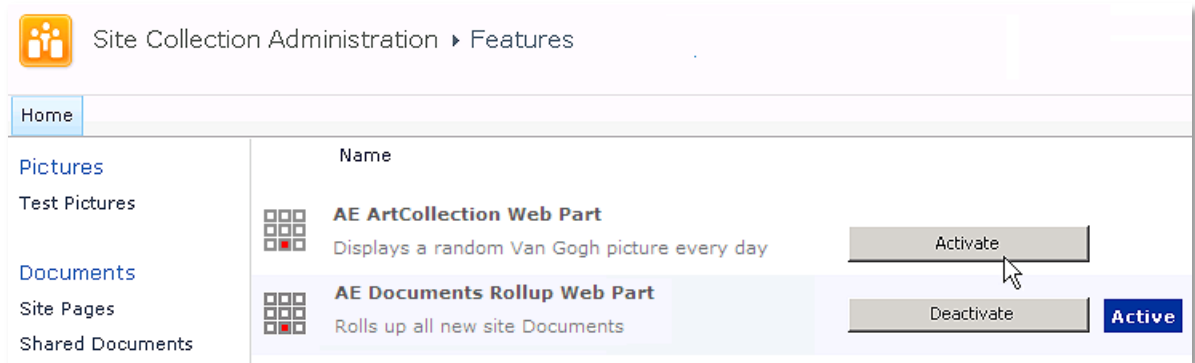
FAST Search user context

Recycle bin

Site collection features

Site hierarchy

Choose "Site collection features" to navigate to the Site Collection Features page:

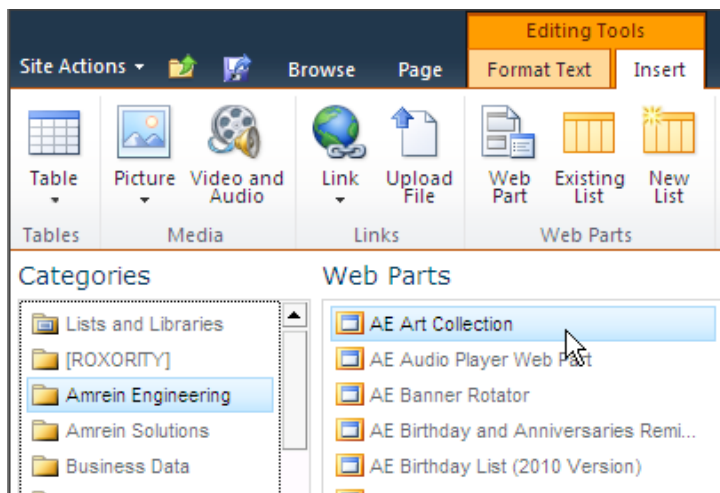


Activate the "AE ArtCollection Web Part" feature

Adding the Web Part to a Page

Navigate to a page where you would like to place the web part and choose "Site Actions/Edit Page"

1. Add the web part to the appropriate zone. The web part is listed in the "Amrein Engineering" gallery section :



Web Part Configuration

Configure the following Web Part properties in the Web Part Editor "Miscellaneous" pane section as needed:

