
Blog Roll Up Web Part

© AMREIN ENGINEERING AG

Version 1.0

October 2010

AE Blog Rollup Web Part



The Admin's Opinion
Okay, this might not come as news to most SharePoint developers who've been around a while, but lately I've been messing with the User Information List in SharePoint and it...

Fred Webster | 10/14/2010 11:04 AM | 1



The Guest Opinion
I was invited to be this weeks GUEST on Paul's Blog so here we go: The "User Spotlight On.." Web Part selects a random user entry from the MOSS User Profile Store and...

AE24\gast | 10/14/2010 11:01 AM | 0



October 2010 Sightings: Cornell Dupree
Cornell Dupree is an American R&B/soul jazz guitarist. He has worked with Donny Hathaway, King Curtis and Steve Gadd, appeared on David Letterman, and written a book on soul and blues...

Juerg Amrein | 10/13/2010 6:38 PM | 0

Description

The Blog Rollup Web Part displays the most recent blog entry of each blog within the Sharepoint Site collection

The Web Part can be used with Windows Sharepoint Services V3, MOSS 2007 and Sharepoint 2010.

The following parameters can be configured:

- The web part CSS style
- The maximum number of blog post items to be displayed
- The maximum number of words to be displayed per post

Prerequisites

Before you attempt to install the solutions you need to make sure that you have the following installed on your server(s):

- Windows SharePoint Services 3.0, Microsoft Office SharePoint Server 2007 or Sharepoint 2010

Installation

Manual Installation

1. download and unpack the **AEBlogRollupWebpart.zip** file.
The ZIP archive contains the AEBlogRollupWebpart.dll and the AEBlogRollup.webpart files.
2. drop the **AEBlogRollupWebpart.dll** either into the SPS web application bin directory or into the GAC of your Sharepoint server (c:\windows\assembly).
3. add the following line to the "<SafeControls>" section of your Web.Config file.
Please make sure that the line is added as one single line (no line breaks):

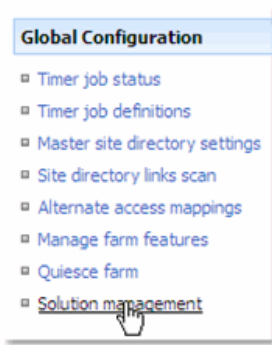
```
<SafeControl Assembly="AEBlogRollupwebpart, Version=1.0.0.0, Culture=neutral, PublicKeyToken=8d6c92310d8d661d " Namespace="AEBlogRollupwebpart" TypeName="*" Safe="True" />
```

4. from the top site go to "Site Actions/Site Settings/Modify All Site Settings/Galleries/Web Parts"
5. use the "Upload" menu option to upload the AEBlogRollup.webpart file.

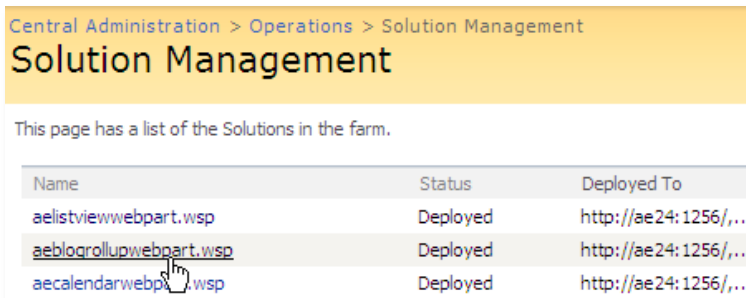
Automatic Installation

1. Unpack the **AEBlogRollupWebpart.wsp** and **Install.bat** files from the Zip Archive and place the 2 files onto your Sharepoint Server.
2. Add the Solution by either running **Install.bat** (WSS 3.0 or MOSS 2007) or **Install2010.bat** (Sharepoint 2010) or by or manually entering:
`stsadm -o addsolution -filename AEBlogRollupwebpart.wsp`

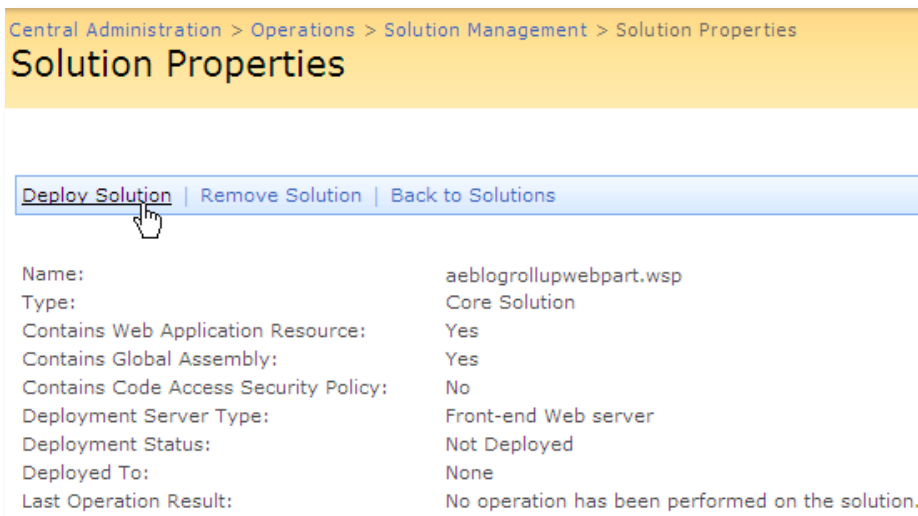
3. Deploy the solution by navigating with your browser to “Central Administration->Operations->Solution Management”:



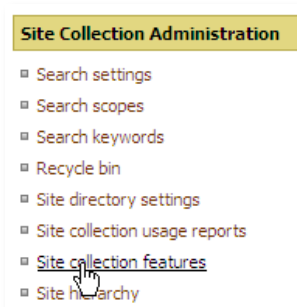
4. You should now see the **AEBlogRollupWebpart.wsp** in the farm’s solution store:



Click on “**AEBlogRollupWebpart.wsp**” to deploy the solution:



5. Proceed to activate the feature by navigating to the “**Site Actions/Site Settings**” page in your top-level site:



Choose “**Site collection features**” to navigate to the Site Collection Features page:

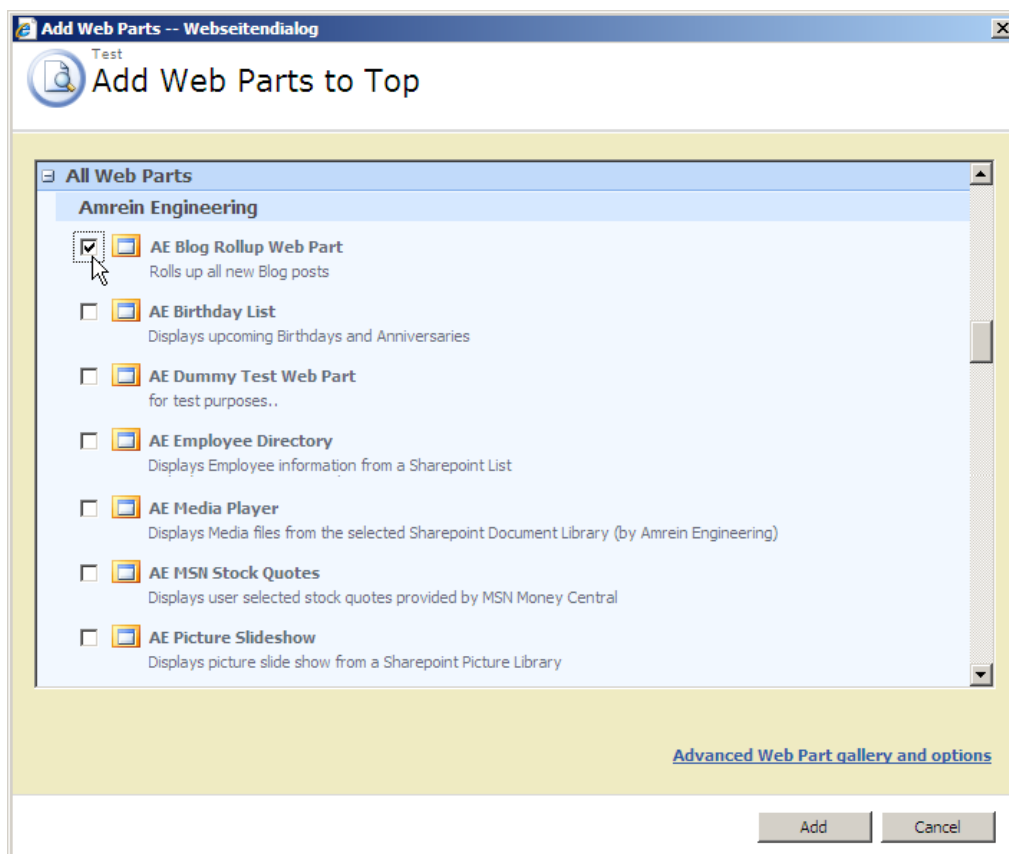


Activate the "AE Blog Rollup Web Part" feature

Adding the Web Part to a Page

Navigate to a page where you would like to place the web part and choose "Site Actions/Edit Page"

Add the web part to the appropriate zone. The web part is listed in the "Amrein Engineering" gallery section :



License Activation

You have the following 3 options to enter your License Key:

1. Enter the License Key into the corresponding “**License Key**” field in the web part configuration pane (see Description above).
2. **WSP Solution Deployment:**
Add the **License.txt** file (as supplied by AMREIN ENGINEERING after having purchased a license) to the Solution at the following location:

```
c:\Program Files\Common Files\Microsoft Shared\Web Server  
Extensions\12\template\features\AEBlogRollupWebpart
```

3. **Manual Deployment:**
Add the License Key to your web.config (typically found at c:\inetpub\wwwroot\wss\virtualdirectories\80) **<appSettings>** section as follows:

```
<appSettings>  
  <add key="AEBL" value="AEBL-x-xxxxx-xxxxx-xx-xx" />  
</appSettings>
```

Replace the “x” characters with your actual key values.

Please note that this method requires you to manually add the key to each Sharepoint application.