

# Calendar Rollup Web Part

Sharepoint 2010/2013 Installation Instructions

© AMREIN ENGINEERING AG

Version 1.0

June 2013

AE Calendar Rollup Web Part

Title	Site	List	Location	Start Time	End Time	Category
Spotlight Test	Test	Calendar	Aarau	6/5/2013 11:00 AM	6/5/2013 12:00 PM	Meeting
Test Header	Test	Calendar	Muri	6/7/2013 2:00 PM	6/7/2013 3:00 PM	Meeting
June 20 Event	Test	Calendar		6/20/2013 12:00 PM	6/20/2013 1:00 PM	Meeting
June 21 Celebration	Test	Calendar		6/21/2013 12:00 PM	6/21/2013 1:00 PM	Meeting
Tech Seminar T320	Test	Calendar	Room Paris	6/21/2013 4:00 PM	6/21/2013 5:00 PM	Meeting
June 22 Event	Test	Calendar		6/22/2013 12:00 AM	6/22/2013 11:59 PM	Meeting
Meet Mrs. Jones	Sub Sub Site	Calendar	Paris	6/26/2013 3:00 PM	6/26/2013 4:00 PM	Meeting
Weekly Sales Meeting	Sub Sub Site	Calendar		6/26/2013 3:00 PM	8/28/2013 4:00 PM	
June 27, 2013 Alex	Alex	Calendar	Alexandria	6/27/2013 9:00 AM	6/27/2013 9:30 AM	Meeting
Thu, June 27	Test	Calendar	Aarau	6/27/2013 6:00 PM	6/27/2013 7:00 PM	Business

Nbr. of Events found: 10

## Description

The Calendar Rollup Web Part displays the events of each Calendar or selected calendars within the Sharepoint Site collection and thus gives much better visibility to events created anywhere within the current site collection. The web part allows to filter the results by any column, the current date and the currently logged-in user.

The Web Part can be used with Windows Sharepoint Services V3, MOSS 2007, Sharepoint 2010 and 2013 (both Server and Foundation).

## Prerequisites

Before you attempt to install the solutions you need to make sure that you have the following installed on your server(s):

- Windows SharePoint Services 3.0, Microsoft Office SharePoint Server 2007, Sharepoint 2010 or 2013

## Installation

### Manual Installation

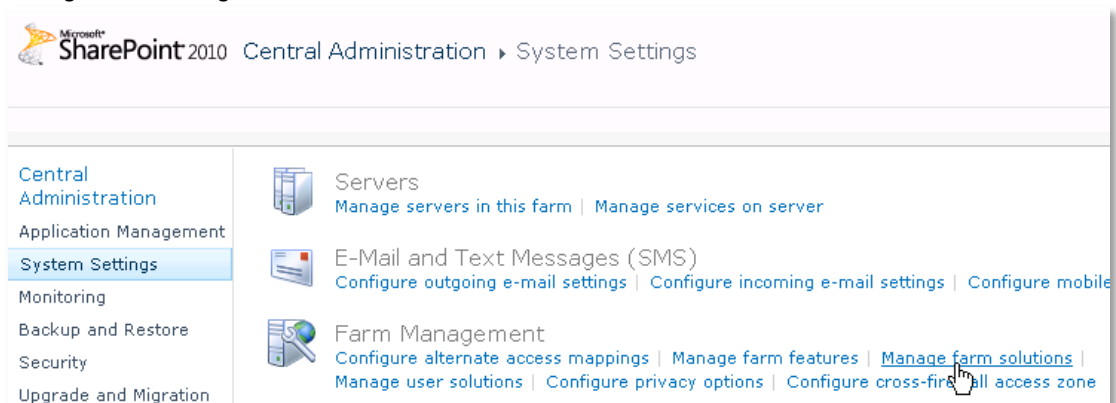
1. download and unpack the **AECalendarRollupWebpart.zip** file.  
The ZIP archive contains the AECalendarRollupWebpart.dll and the AECalendarRollup.webpart files.
2. drop the AECalendarRollupWebpart.dll into the GAC of your Sharepoint server (c:\windows\assembly).
3. add the following line to the "<SafeControls>" section of your Web.Config file.  
Please make sure that the line is added as one single line (no line breaks):

```
<SafeControl Assembly="AECalendarRollupWebpart, Version=1.0.0.0, Culture=neutral,
PublicKeyToken=6dc9d823be3538d0" Namespace="AECalendarRollupWebpart" TypeName="*"
Safe="True" />
```

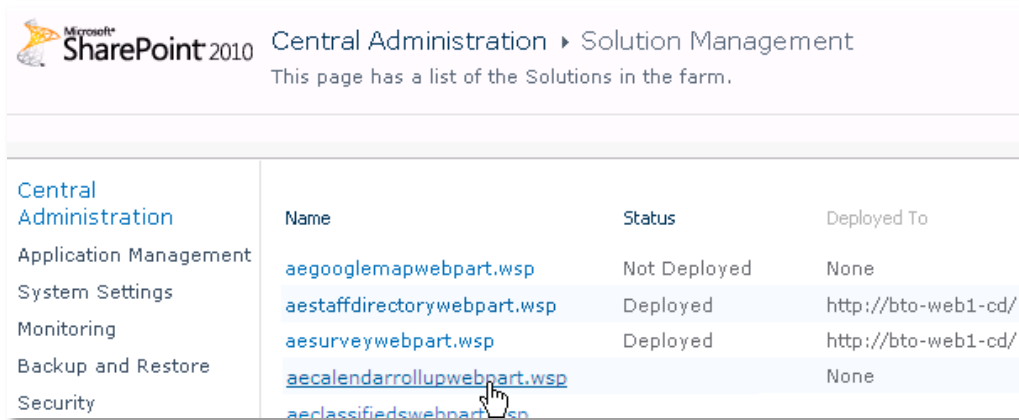
4. from the top site go to "Site Actions/Site Settings/Modify All Site Settings/Galleries/Web Parts"
5. use the "Upload" menu option to upload the AECalendarRollup.webpart file.

### Automatic Installation

1. Unpack the **AECalendarRollupWebpart.wsp** and **Install2010.bat** or **Install2013.bat** files from the Zip Archive and place the 2 files onto your Sharepoint Server.
2. Add the Solution by either running **Install.bat** (WSS 3.0 or MOSS 2007) or **Install2010.bat** (Sharepoint 2010) or **Install2013.bat** (Sharepoint 2013) or by manually entering:  
`stsadm -o addsolution -filename AECalendarRollupwebpart.wsp`
3. Deploy the solution by navigating with your browser to "Central Administration > System Settings > Farm Management > Manage farm solutions":



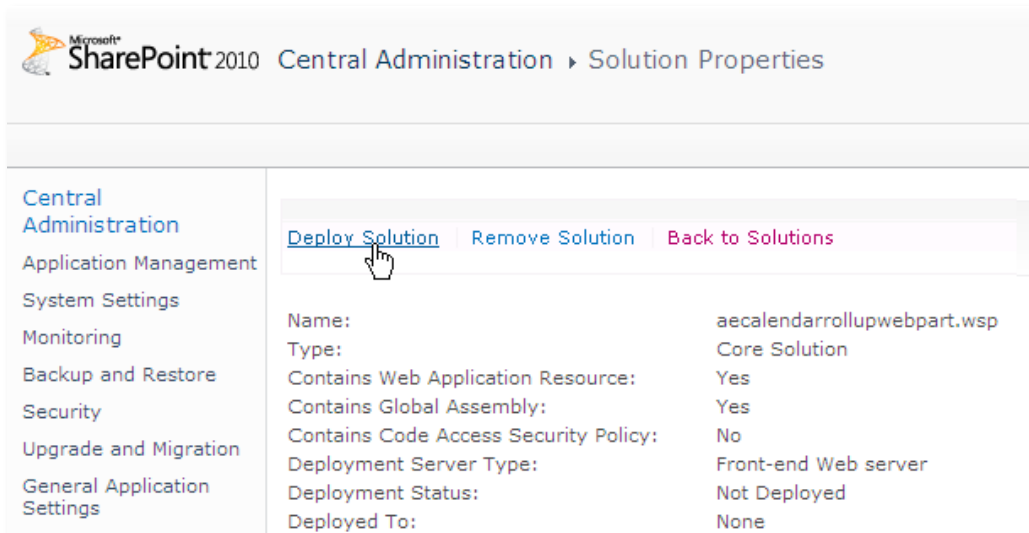
4. You should now see the **AECalendarWebpart.wsp** in the farm's solution store:



Microsoft SharePoint 2010 Central Administration > Solution Management  
This page has a list of the Solutions in the farm.

	Name	Status	Deployed To
Central Administration			
Application Management	<a href="#">aegooglemapwebpart.wsp</a>	Not Deployed	None
System Settings	<a href="#">aestaffdirectorywebpart.wsp</a>	Deployed	http://bto-web1-cd/
Monitoring	<a href="#">aesurveywebpart.wsp</a>	Deployed	http://bto-web1-cd/
Backup and Restore	<a href="#">aecalendarrollupwebpart.wsp</a>		None
Security	<a href="#">aeclassifiedswebpart.wsp</a>		

Click on “**AECalendarRollupwebpart.wsp**” to deploy the solution:



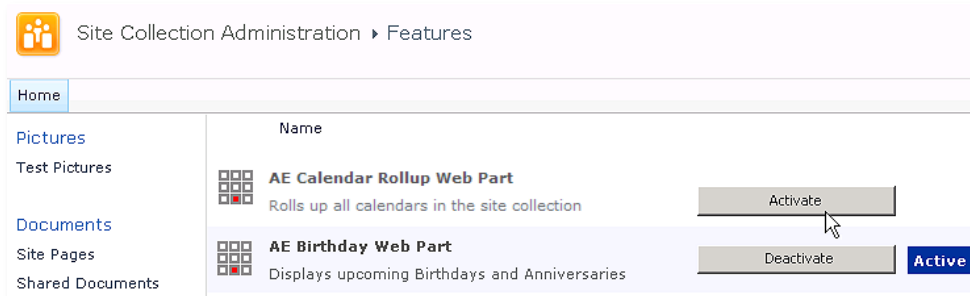
Microsoft SharePoint 2010 Central Administration > Solution Properties

Central Administration	<a href="#">Deploy Solution</a> <a href="#">Remove Solution</a> <a href="#">Back to Solutions</a>	
Application Management		
System Settings		
Monitoring		
Backup and Restore		
Security		
Upgrade and Migration		
General Application Settings		
	Name:	aecalendarrollupwebpart.wsp
	Type:	Core Solution
	Contains Web Application Resource:	Yes
	Contains Global Assembly:	Yes
	Contains Code Access Security Policy:	No
	Deployment Server Type:	Front-end Web server
	Deployment Status:	Not Deployed
	Deployed To:	None

5. Proceed to activate the feature by navigating to the “Site Actions/Site Settings” page in your top-level site:



Choose “Site collection features” to navigate to the Site Collection Features page:

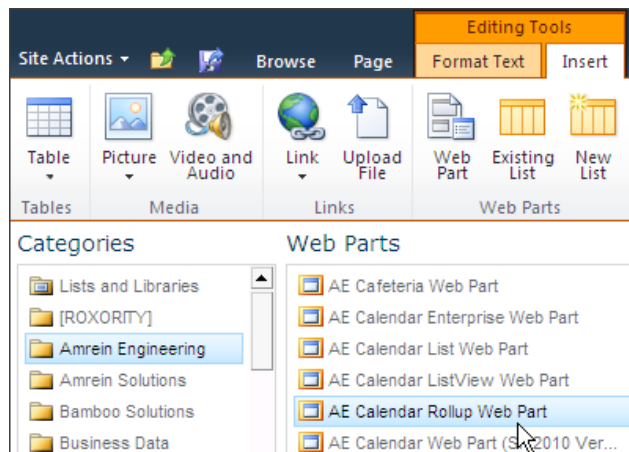


Activate the “AE Calendar Rollup Web Part” feature

### Adding the Web Part to a Page

Navigate to a page where you would like to place the web part and choose "Site Actions/Edit Page"

Add the web part to the appropriate zone. The web part is listed in the "Amrein Engineering" gallery section :



## Web Part Configuration

Configure the following Web Part properties in the Web Part Editor "Miscellaneous" pane section as needed:

The screenshot shows the 'Miscellaneous' configuration pane with the following settings:

- Field Template: Title;Site;ListId;Location;Start
- Nbr. of Events: 20
- Sort By: EventDate
- Group By: (empty)
- Property Filter: EventDate>{today-50} AND E\
- Show Column Headers
- Show Pager
- Show Groups collapsed
- Show Edit Form
- Calendars to be included: (empty)
- Search Subsites only
- Alternating Row Color: (empty)
- Footer Text: Nbr. of Events found: {n}/trac
- Cache Retention Time: 0
- License Key: (empty)

Please refer to the "Calendar Document Rollup" web site at <http://www.amrein.com/apps/page.asp?Q=5839> for a detailed description of each web part setting.

### Property Filter:

You can choose from the following filter operators:

Operator	Description
AND	Combines more than one clause. Records must match all criteria to be displayed.
OR	Combines more than one clause. Records must match at least one of the filter expressions
NOT	Reverses an expression. Can be used in conjunction with any other clause.
<, >, <=, and >=	Performs comparison of values. These comparisons can be numeric or alphabetic.
BETWEEN	Specifies an inclusive range. Example: Units BETWEEN 5 AND 15
<>, =	Performs equality testing.
IS NULL	Tests the Property for a null value.
IN (a, b, c)	A short form for using an OR clause with the same field.

LIKE	Performs pattern matching with string data types.
+	Adds two numeric values, or concatenates a string.
-	Subtracts one numeric value from another.
*	Multiplies two numeric values.
/	Divides one numeric value by another.
%	Finds the modulus (the remainder after one number is divided by another).

## License Activation

You have the following 3 options to enter your License Key:

1. Enter the License Key into the corresponding “**License Key**” field in the web part configuration pane (see Description above).
2. **WSP Solution Deployment:**  
Add the **License.txt** file (as supplied by AMREIN ENGINEERING after having purchased a license) to the Solution at the following location:

```
c:\Program Files\Common Files\Microsoft Shared\Web Server  
Extensions\14\template\features\AECalendarRollupWebpart
```

3. **Manual Deployment:**  
Add the License Key to your web.config (typically found at c:\inetpub\wwwroot\wss\virtualdirectories\80) **<appSettings>** section as follows:

```
<appSettings>  
  <add key="AECW" value="AECW-x-xxxxx-xxxxx-xx-xxx" />  
</appSettings>
```

Replace the “x” characters with your actual key values.

Please note that this method requires you to manually add the key to each Sharepoint application.