

---

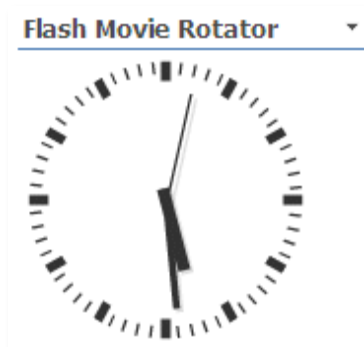
# Flash Rotator

## Web Part

© AMREIN ENGINEERING AG

Version 1.0

September 2009



## Description

The Flash Movie Rotator Web Part selects a random Flash movie file from the specified Sharepoint Picture Library. The Web Part can also be used to display a single static Flash movie by specifying a filename in the "Flash Movie Name" parameter field.

The Web Part can be used with Windows WSS 3.0, MOSS 2007 and Sharepoint 2010.

## Prerequisites

Before you attempt to install the solutions you need to make sure that you have the following installed on your server(s):

- Microsoft Office SharePoint Server 2007, WSS 3.0 or Sharepoint 2010

## Installation

### Manual Installation

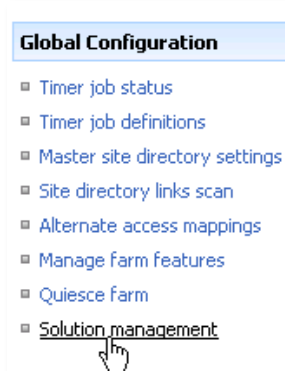
1. download and unpack the **AEFlashRotatorWebpart.zip** file.  
The ZIP archive contains the AEFlashRotatorWebpart.dll and the AEFlashRotator.webpart files.
2. drop the AEFlashRotatorWebpart.dll into the GAC of your Sharepoint server (c:\windows\assembly).
3. add the following line to the "<SafeControls>" section of your Web.Config file.  
Please make sure that the line is added as one single line (no line breaks):

```
<SafeControl Assembly="FlashWebpart, Version=1.0.0.0, Culture=neutral,
PublicKeyToken=3606277f1af4d319" Namespace="FlashWebpart" TypeName="*" Safe="True" />
```

4. from the top site go to "Site Actions/Site Settings/Modify All Site Settings/Galleries/Web Parts"
5. use the "Upload" menu option to upload the AEFlashRotator.webpart file.

### Automatic Installation

1. Unpack the **AEFlashRotatorWebpart.wsp** and **Install.bat** (**install2010.bat** for Sharepoint 2010) files from the Zip Archive and place the 2 files onto your Sharepoint Server.
2. Add the Solution by either running **Install.bat** or manually entering:  
stsadm -o addsolution -filename AEFlashRotatorwebpart.wsp
3. Deploy the solution by navigating with your browser to "Central Administration->Operations->Solution Management":



4. You should now see the **AEFlashRotatorWebpart.wsp** in the farm's solution store:

Central Administration > Operations > Solution Management

## Solution Management

This page has a list of the Solutions in the farm.

Name	Status	Deployed To
<a href="#">aelistviewwebpart.wsp</a>	Deployed	http://ae24:1256/,...
<a href="#">aemediaplayerwebpart.wsp</a>	Deployed	http://ae24:1256/,...
<a href="#">aeflashrotatorwebpart.wsp</a>	Not Deployed	http://ae24:1256/,...
<a href="#">aeformwebpart.wsp</a>	Deployed	None

Click on "AEFlashRotatorWebpart.wsp" to deploy the solution:

Central Administration > Operations > Solution Management > Solution Properties

## Solution Properties

[Deploy Solution](#) | [Remove Solution](#) | [Back to Solutions](#)

Name: aeflashrotatorwebpart.wsp  
 Type: Core Solution  
 Contains Web Application Resource: Yes  
 Contains Global Assembly: Yes  
 Contains Code Access Security Policy: No  
 Deployment Server Type: Front-end Web server  
 Deployment Status: Not Deployed  
 Deployed To: None  
 Last Operation Result: No operation has been performed on the solution.

5. Proceed to activate the feature by navigating to the "Site Actions/Site Settings" page in your top-level site:

Site Collection Administration

- ▣ Search settings
- ▣ Search scopes
- ▣ Search keywords
- ▣ Recycle bin
- ▣ Site directory settings
- ▣ Site collection usage reports
- ▣ [Site collection features](#)
- ▣ Site hierarchy

Choose "Site collection features" to navigate to the Site Collection Features page:

AE Home > Site Settings > Site Features

## Site Collection Features

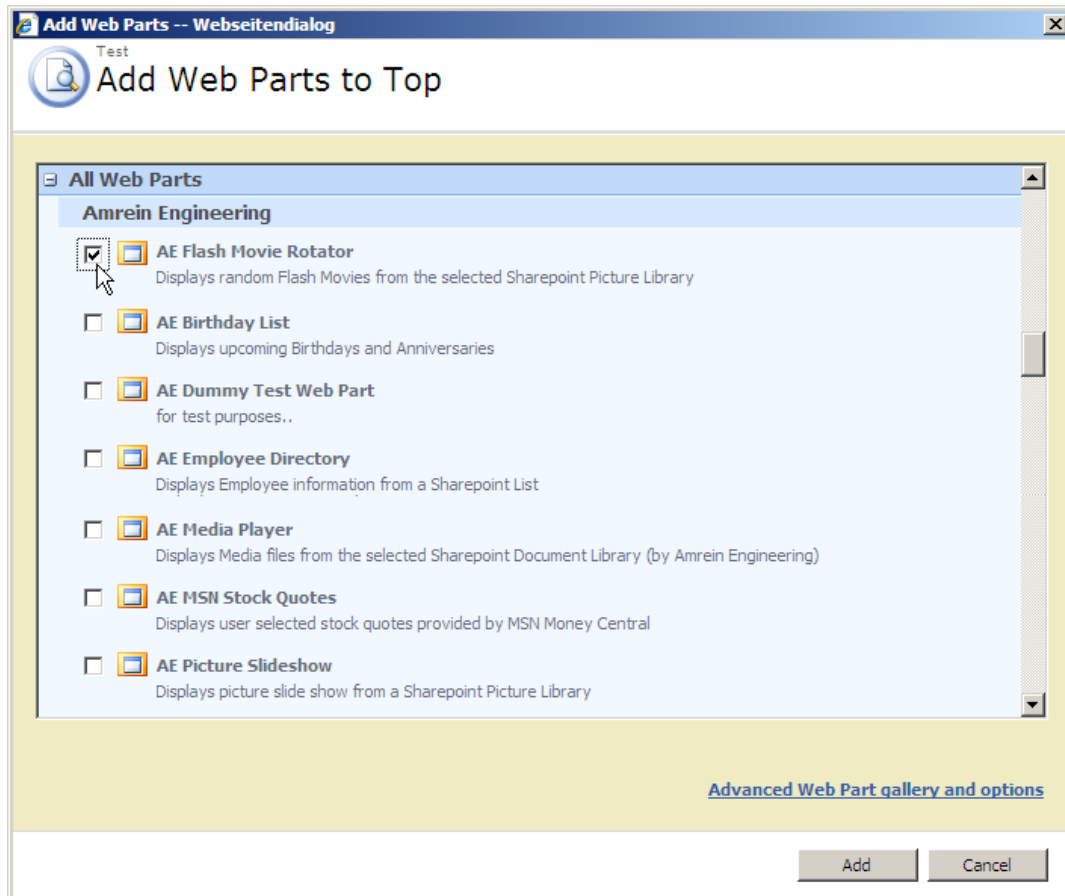
Name	Status
 <b>AddNumbers</b>	<a href="#">Deactivate</a> <b>Active</b>
 <b>AE Flash Movie Rotator</b> Displays random Flash Movies from the selected Sharepoint Picture Library	<a href="#">Activate</a>

Activate the "AE FlashRotator Web Part" feature

## Adding the Web Part to a Page

Navigate to a page where you would like to place the web part and choose "Site Actions/Edit Page"

Add the web part to the appropriate zone. The web part is listed in the "Amrein Engineering" gallery section:



## Web Part Configuration

Configure the following Web Part properties in the Web Part Editor "Miscellaneous" pane section as needed:

- **Site Name:**  
Enter the name of the site that contains the Spotlight Picture Library:
  - leave this field empty if the Library is in the current site (eg. the Web Part is placed in the same site)
  - Enter a "/" character if the Library is contained in the top site
  - Enter a path if the Library is in a subsite of the current site (eg. in the form of "current site/subsite")
- **List Name:** Enter the desired Sharepoint Picture Library
- **Flash Movie Name:**  
if you rather want to statically display a specific Flash movie from the specified Picture Library. In this case enter the Flash file name (without any path information)
- **Flash Width:**  
enter the desired width of the Flash movie(s) in pixels
- **Flash Height:**  
enter the desired height of the Flash movie(s) in pixels

The image shows a screenshot of the 'Miscellaneous' configuration pane in a Web Part Editor. The pane is titled 'Miscellaneous' and contains the following fields:

- Site Name: An empty text box.
- List Name: A text box containing 'Flash Library'.
- Flash Movie Name (optional): A text box containing 'watch.swf'.
- Flash width (px): A text box containing '150'.
- Flash height (px): A text box containing '150'.