

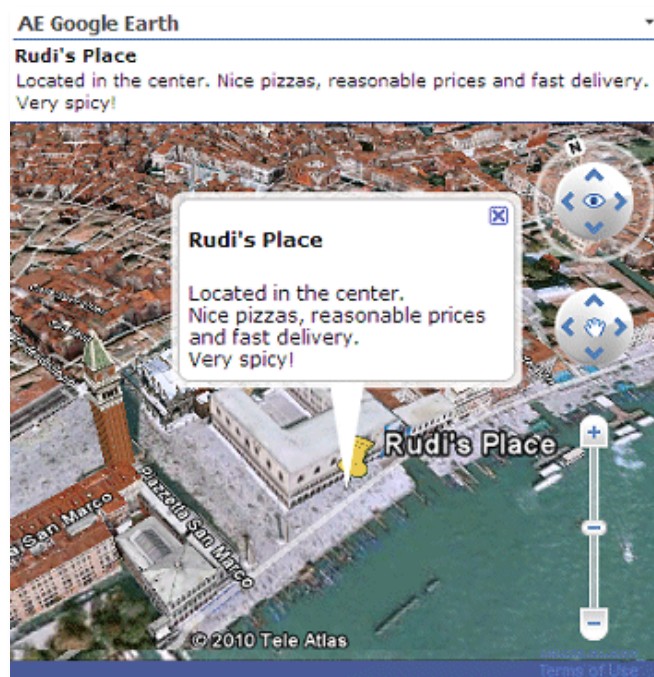
Google Earth Web Part

Enterprise Version

© AMREIN ENGINEERING AG

Version 1.0

February 2010



Description

The Google Earth Web Part allows to display the geographical location of a given address. The address can either be static or contained in a connected Sharepoint List. The map is created using Google's public Map API.

The following parameters can be configured:

- Connection to a Sharepoint List containing the **address** or **longitude/latitude** coordinates
- or static mode, where a fixed address is displayed
- Map Size
- Map Altitude (Zoom Level)
- Map Details (Buildings, Placemark pin, Map status bar, Map navigation controls)
- Fly to destination vs. static display of target location
- Location Title and Description (if connected to Sharepoint List)

Prerequisites

Before you attempt to install the solutions you need to make sure that you have the following installed on your server(s):

- Windows SharePoint Services 3.0, Microsoft Office SharePoint Server 2007 (MOSS) or Sharepoint 2010

Installation

Manual Installation

1. download and unpack the **AEGoogleEarthWebpart.zip** file.
The ZIP archive contains the AEGoogleEarthWebpart.dll and the AEGoogleEarth.webpart files.
2. drop the AEGoogleEarthWebpart.dll either into the SPS web application bin directory or into the GAC of your Sharepoint server (c:\windows\assembly).
3. add the following line to the "<SafeControls>" section of your Web.Config file.
Please make sure that the line is added as one single line (no line breaks):

```
<SafeControl Assembly="AEGoogleEarthWebpart, Version=1.0.0.0, Culture=neutral,
PublicKeyToken=90a344174c15338b" Namespace="AEGoogleEarthWebpart" TypeName="*" Safe="True" />
```

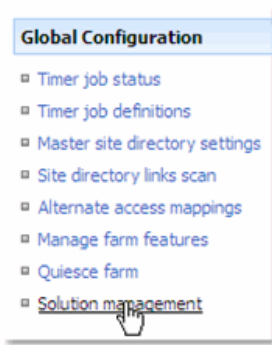
4. from the top site go to "Site Actions/Site Settings/Modify All Site Settings/Galleries/Web Parts"
5. use the "Upload" menu option to upload the AEGoogleEarth.webpart file.

Automatic Installation

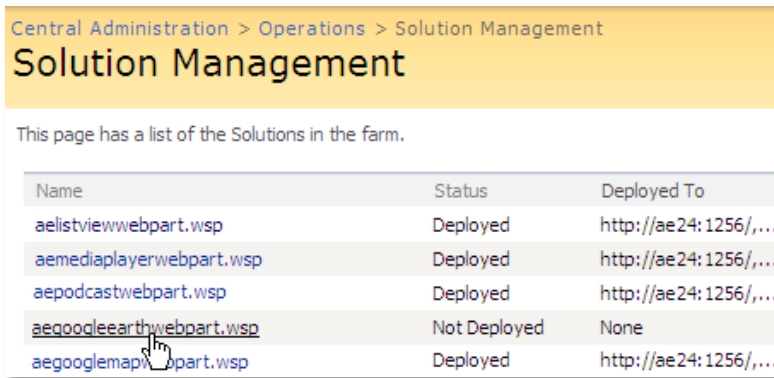
1. Unpack the **AEGoogleEarthWebpart.wsp** and **Install.bat** files from the Zip Archive and place the 2 files onto your Sharepoint Server.
2. Add the Solution by either running **Install.bat** (WSS 3.0 or MOSS 2007) or **Install2010.bat** (Sharepoint 2010) or by manually entering:

```
stsadm -o addsolution -filename AEGoogleEarthwebpart.wsp
```

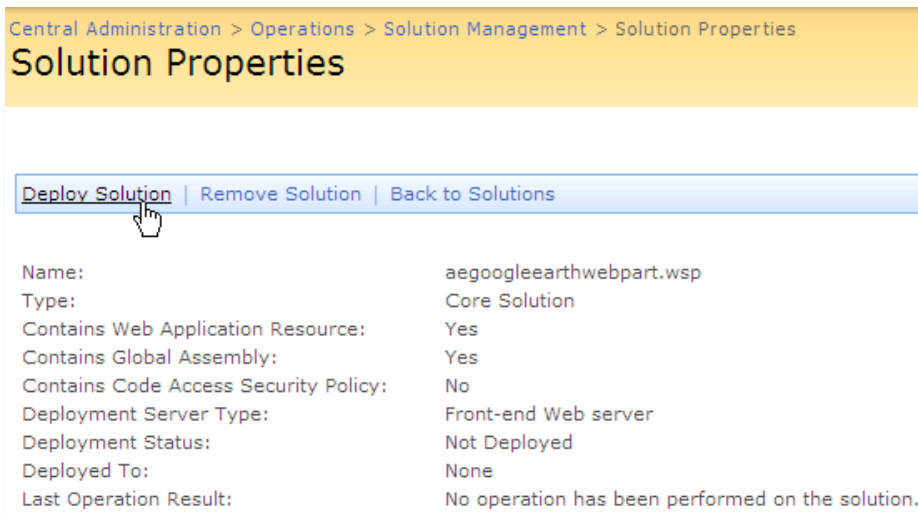
3. Deploy the solution by navigating with your browser to “Central Administration->Operations->Solution Management”:



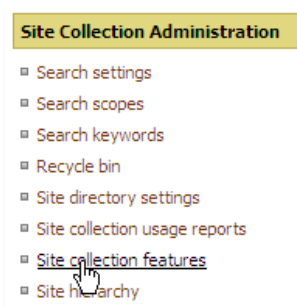
4. You should now see the **AEGoogleEarthWebpart.wsp** in the farm’s solution store:



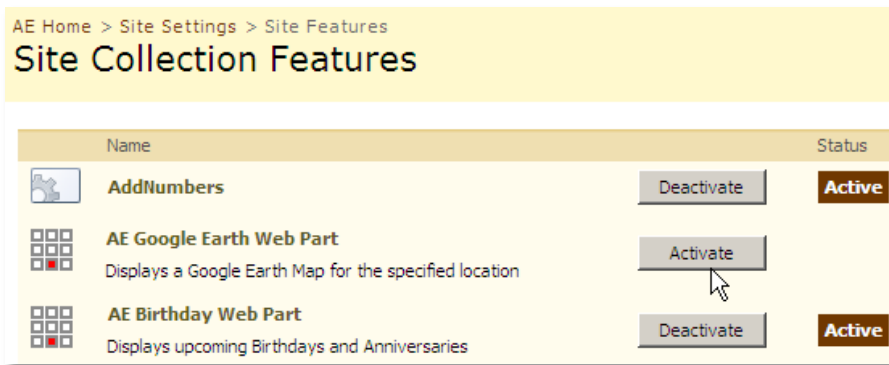
Click on “**AEGoogleEarthWebpart.wsp**” to deploy the solution:



5. Proceed to activate the feature by navigating to the “Site Actions/Site Settings” page in your top-level site:



Choose "Site collection features" to navigate to the Site Collection Features page:

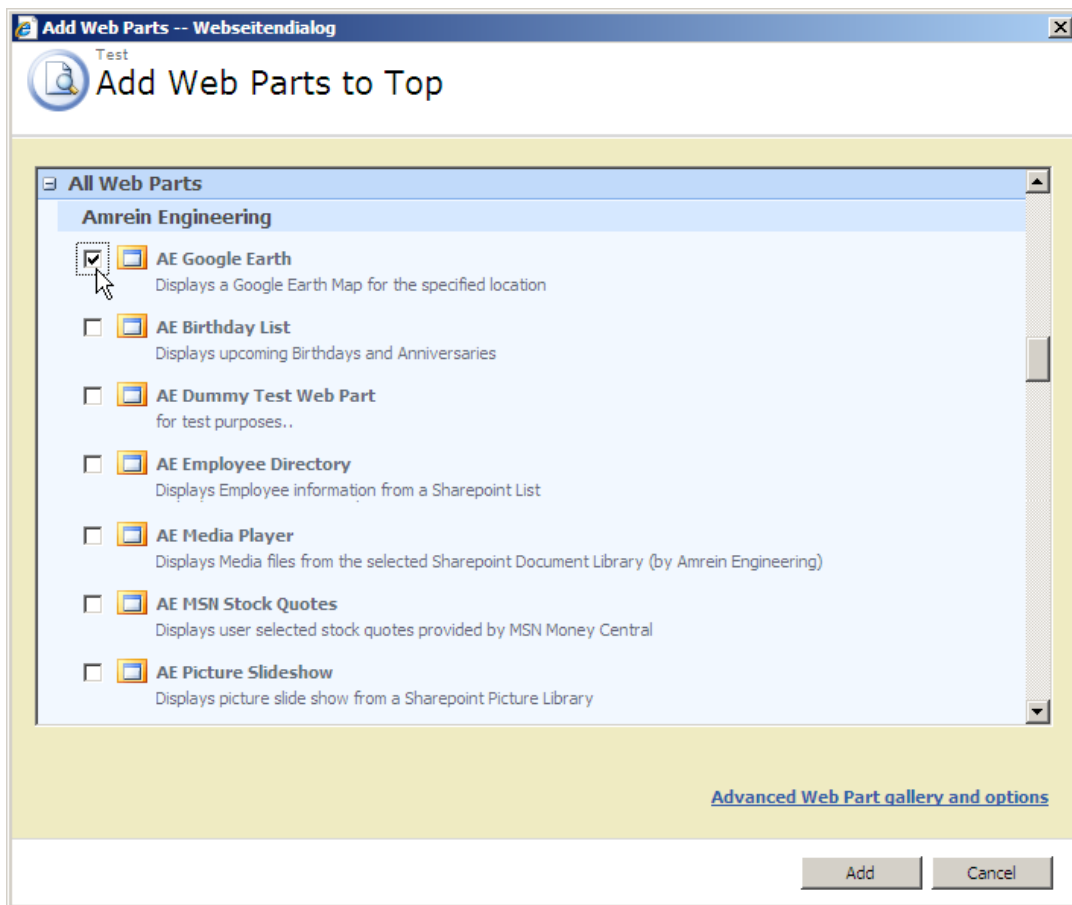


Activate the "AE Google Earth Web Part" feature

Adding the Web Part to a Page

Navigate to a page where you would like to place the web part and choose "Site Actions/Edit Page"

1. Add the web part to the appropriate zone. The web part is listed in the "Amrein Engineering" gallery section :



Web Part Configuration

1. If you want to **connect** the Google Earth Web Part to a Sharepoint List, either adapt an existing Sharepoint List or create a new List to store the data to be mapped. Also optionally define a suitable List View for the List if you want to sort or filter the data in a specific way

The list should include

- either one or more columns to hold the street address to be mapped
- or the two columns explicitly named "Latitude" and "Longitude" holding the latitude/longitude coordinates:

City	Address	Longitude	Latitude
New York	2175 Broadway	8.050747	47.394631

Create a Web Part Connection between the Sharepoint List and the Google Earth Map web part as follows:

- switch the page to "Edit" mode
- Choose "Connections" from the List Web Part "edit" menu
- Choose "Provide Row To"
- Select the Google Earth Web Part in the menu

The screenshot displays a SharePoint web page with two main components. On the left is a table titled "Nice Restaurants" with columns for Title, Description, City, and Address. The table lists four restaurants, with "Charlie's Burger Joint" selected. On the right is a Google Earth map titled "Restaurant Locations" showing a red pin on a map of New York City, specifically at the intersection of Broadway and West End Ave. The map also shows surrounding streets like W 76th St, W 77th St, and W 78th St.

Nice Restaurants				
New	Actions	Settings		
@	Title	Description	City	Address
<input type="radio"/>	Pizza-Hüslli	Located in the center. Nice pizzas, reasonable prices and fast delivery. Very spicy!	Aarau	Bahnhofstrasse 92
<input type="radio"/>	All's Kepab Stand	Located in the outskirts of town. Cheap and nice Kebabs around the clock. Incredibly spicy !	Lenzburg	Bahnhofstrasse 50
<input type="radio"/>	Herbie's Fish and Chips	Greasy fish and french fries. Only recommended for the brave at heart!	Luzern	St.Karlistrasse 39a
<input checked="" type="radio"/>	Charlie's Burger Joint <small>NEW</small>	DELICIOUS. The food is always fresh tasting [no matter what time] and it always leaves you wanting more...	New York	2175 Broadway

License Activation

You have the following 3 options to enter your License Key:

1. Enter the License Key into the corresponding "License Key" field in the web part configuration pane (See Description above).

2. WSP Solution Deployment:

Add the **License.txt** file (as supplied by AMREIN ENGINEERING after having purchased a license) to the Solution at the following location:

```
c:\Program Files\Common Files\Microsoft Shared\Web Server  
Extensions\12\template\features\AEGoogleEarthWebpart
```

3. Manual Deployment:

Add the License Key to your web.config (typically found at c:\inetpub\wwwroot\wss\virtualdirectories\80) <appSettings> section as follows:

```
<appSettings>  
<add key="AEGE" value="AEGE-x-xxxxx-xxxxx-xx-xx" />  
</appSettings>
```

Replace the "x" characters with your actual key values.

Please note that this method requires you to manually add the key to each Sharepoint application.