

# Picture Lightbox Web Part Installation Instructions for SharePoint Online/Office365

## AE Picture Lightbox Web Part



Blues After Midnight



Summer Landscapes



Trip to Mars



Mushroom Season

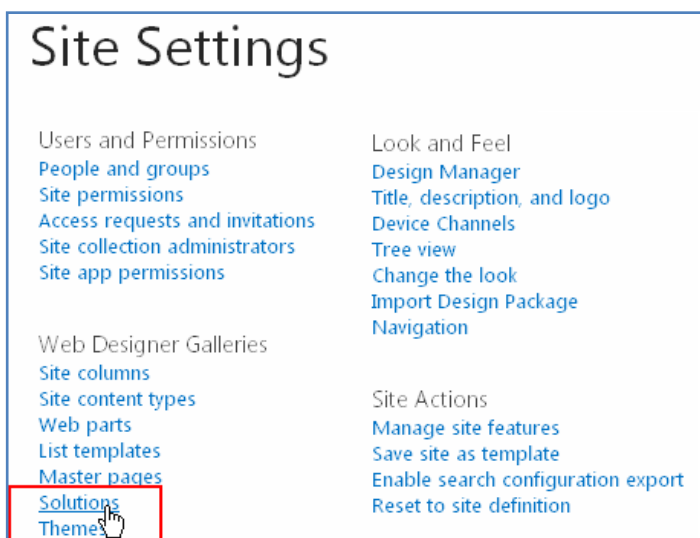


Mountain Lake



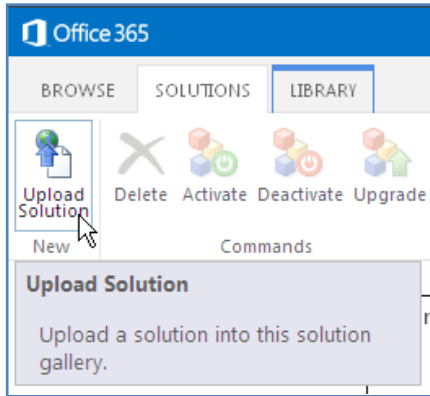
Skyscrapers

- Download the “**Picture Lightbox Web Part for Office365**” zip file from our website at <http://www.amrein.com/apps/page.asp?Q=5740>
- Extract the **AELightboxWebpart365.wsp** file
- If you previously installed an older version, then navigate to “Site settings/Web Designer Galleries/Web parts” and delete the below file:  
**AELightbox.webpart**

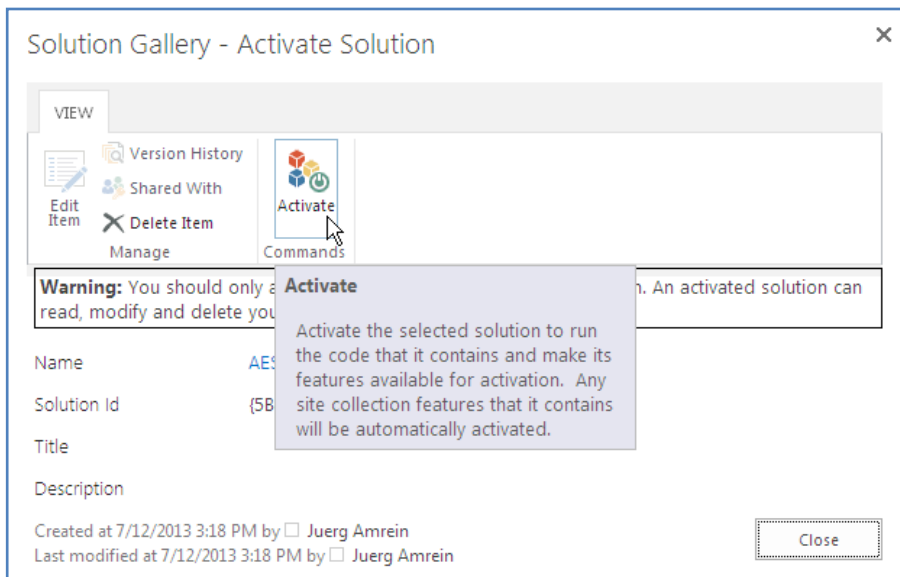


- If you previously installed an older version, then navigate to “Site settings/Web Designer Galleries/Solutions”, deactivate the **AESBLightboxWebpart** solution and then delete the solution

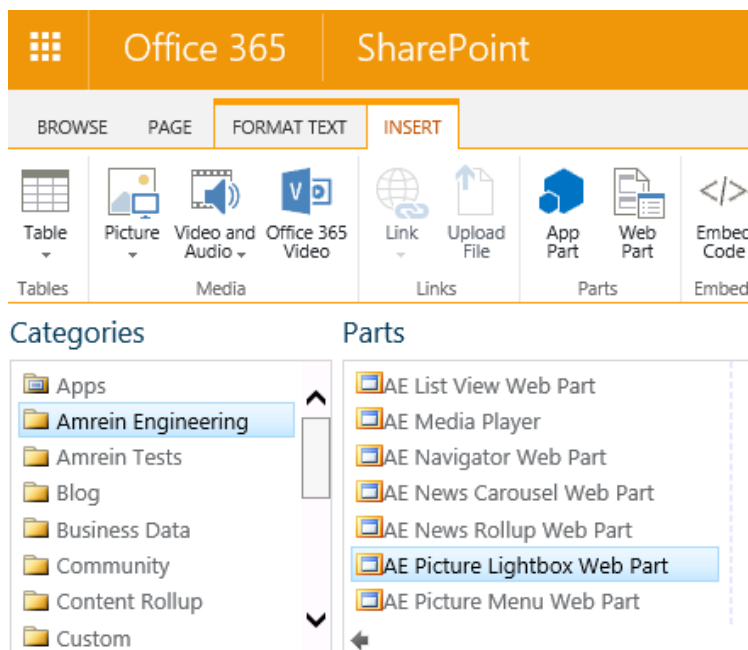
- Upload the **AELightboxWebpart365.wsp** solution file



- activate the solution:



- You now can insert the "AE Digital Clock Web Part" ("Amrein Engineering" web part gallery category) into a page:



- save the page and configure it by clicking the **ellipses** to open the configuration dialog:

## AE Picture Lightbox Web Part



- configure the settings as needed and confirm each setting by clicking its **“Update”** button:

### Settings ×

List Name:	<input type="text" value="Halloween"/>	<input type="button" value="Update"/>
Site Name:	<input type="text"/>	<input type="button" value="Update"/>
View Name:	<input type="text"/>	<input type="button" value="Update"/>
Thumbnail Height:	<input type="text" value="125"/>	<input type="button" value="Update"/>
Thumbnail Width:	<input type="text" value="125"/>	<input type="button" value="Update"/>
CSS Style:	<input type="text"/>	<input type="button" value="Update"/>
Options:	<input type="text"/>	<input type="button" value="Update"/>
License Key	<input type="text"/>	<input type="button" value="Update"/>