
Org Chart

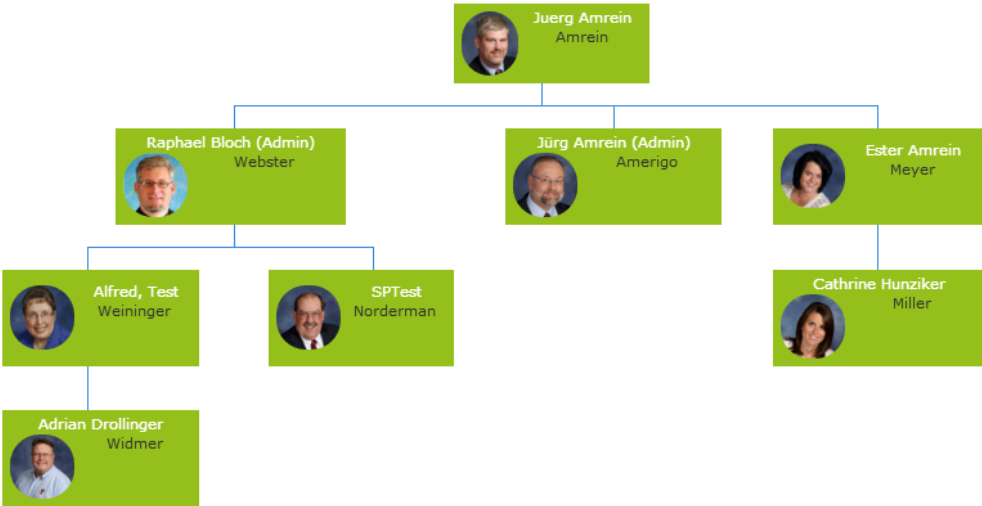
Web Part

WSS 3.0/Sharepoint 2007 Version

© AMREIN ENGINEERING AG

Version 1.0

January 2018



Description

The Org Chart Web Part reads the user entries from a Sharepoint List and displays the selected user fields in a list.

The Web Part is compatible with WSS 3.0, MOSS and Sharepoint 2010 (including "Foundation").

The following parameters can be configured:

- Sharepoint List containing the Employee data
- List columns to be displayed

Prerequisites

Before you attempt to deploy the solution you need to make sure that you have the following installed on your server(s):

- Microsoft Office SharePoint Server 2007 or WSS 3.0
- or Microsoft Sharepoint 2010

Installation

Manual Installation

1. download and unpack the **AEOrgChartWebpart.zip** file.
The ZIP archive contains the AEOrgChartWebpart.dll and the AEOrgChart.webpart files.
2. drop the **AEOrgChartWebpart.dll** either into the SPS web application bin directory or into the GAC of your Sharepoint server (c:\windows\assembly).
3. add the following line to the "<SafeControls>" section of your Web.Config file.
Please make sure that the line is added as one single line (no line breaks):

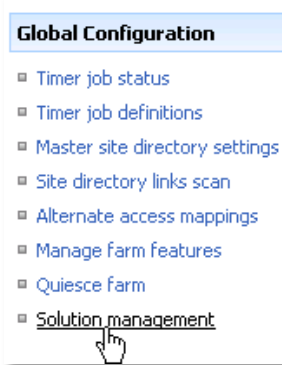
```
<SafeControl Assembly="AEOrgChartWebpart, Version=1.0.0.0, Culture=neutral,
PublicKeyToken=378c3f67ae7fa3f4" Namespace="AEOrgChartWebpart" TypeName="*" Safe="True" />
```

4. from the top site go to "Site Actions/Site Settings/Modify All Site Settings/Galleries/Web Parts"
5. use the "Upload" menu option to upload the AEOrgChart.webpart file.

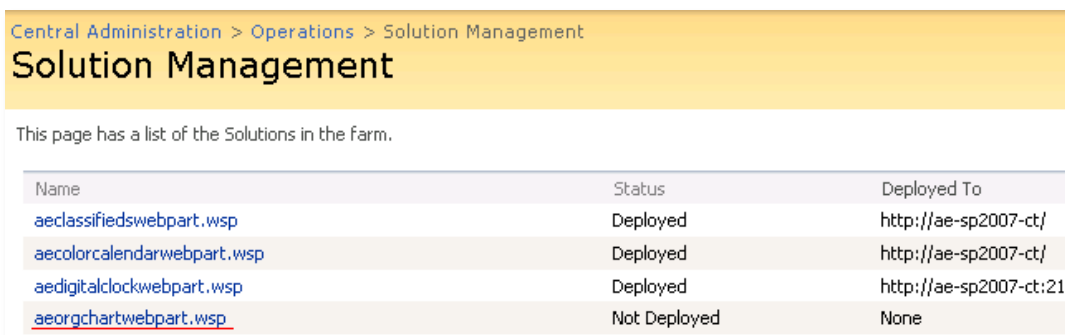
Automatic Installation (recommended)

1. Unpack the **AEOrgChartWebpart.wsp** and **Install.bat** files from the Zip Archive and place the 2 files onto your Sharepoint Server.
2. Add the Solution by either running **Install.bat** or manually entering:
`stsadm -o addsolution -filename AEOrgChartwebpart.wsp`

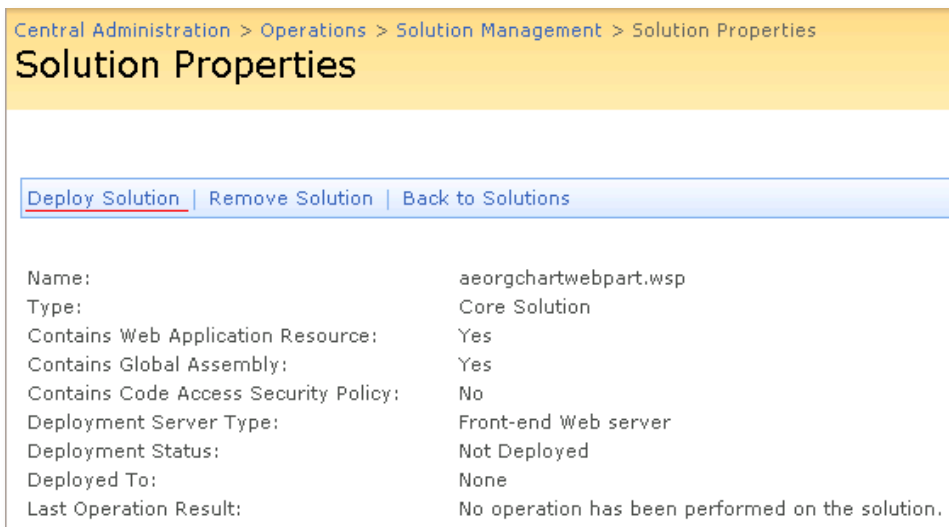
3. Deploy the solution by navigating with your browser to “Central Administration->Operations->Solution Management”:



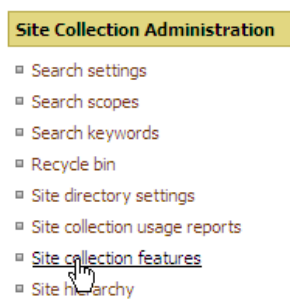
4. You should now see the **AEOrgChartWebpart.wsp** in the farm’s solution store:



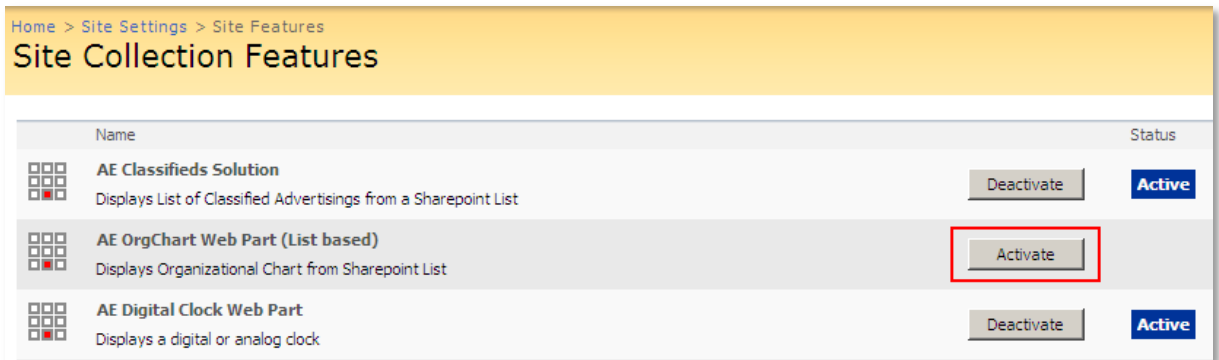
Click on “AEOrgChartWebpart.wsp” to deploy the solution:



5. Proceed to activate the feature by navigating to the “Site Actions/Site Settings” page in your top-level site:



Choose "Site collection features" to navigate to the Site Collection Features page:

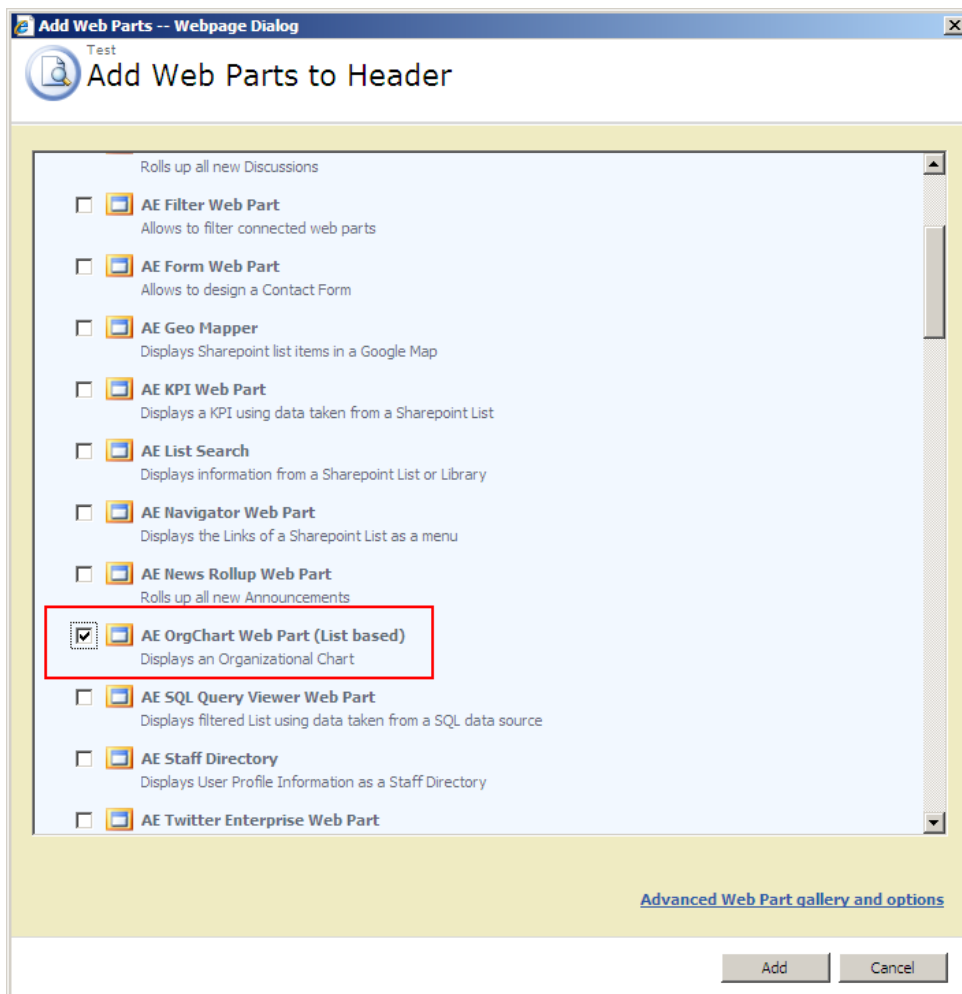


Activate the "AE OrgChart Web Part" feature

Adding the Web Part to a Page

Navigate to a page where you would like to place the web part and choose "Site Actions/Edit Page"

1. Add the web part to the appropriate zone. The web part is listed in the "Amrein Engineering" gallery section :



Web Part Configuration

Sharepoint List:

Create a new Sharepoint List (if not already present) that holds the data. This List will hold the Employee data to be displayed by the web part. Please make sure to add both a column holding the unique employee name and the Manager name.

○ **Web Part Settings:**

Configure the following Web Part properties in the Web Part Editor "Miscellaneous" pane section as needed:

Site Name: Enter the name of the site that contains the Employee List:

- leave this field empty if the List is in the current site (eg. the Web Part is placed in the same site)
- Enter a "/" character if the List is contained in the top site
- Enter a path if the List is in a subsite of the current site (eg. in the form of "current site/subsite")

○ **List Name:** Enter the desired Sharepoint List

○ **View Name:** Optionally enter the desired List View of the list specified above. A List View allows you to specify specific data filtering and sorting.

Leave this field empty if you want to use the List default view.

○ **Node List Field Name:** Enter the list column that identifies the user

○ **Parent List Field Name:** Enter the column that holds the user's manager

○ **Field Template:** Enter the List columns to be displayed, enclosed in curly braces

Example:

**{Firstname} {Lastname}
{Phone}**

○ **User Photo Height:** specify the image height in pixels if you include the "Picture" column..

○ **License Key:** enter your Product License Key (as supplied after purchase of the "Employee Directory Web Part" license key). Leave this field empty if you are using the free 30 day evaluation version or if you choose one of the License Activation described in the next section below.

License Activation

You have the following 3 options to enter your License Key:

1. Enter the License Key into the corresponding "License Key" field in the web part configuration pane (See Description above).

2. WSP Solution Deployment:

Add the **License.txt** file (as supplied by AMREIN ENGINEERING after having purchased a license) to the Solution at the following location:

```
c:\Program Files\Common Files\Microsoft Shared\Web Server Extensions\12\template\features\AEOrgChartWebpart
```

3. Manual Deployment:

Add the License Key to your web.config (typically found at c:\inetpub\wwwroot\wss\virtualdirectories\80) **<appSettings>** section as follows:

```
<appSettings>  
  <add key="AEOC" value="AEOC-x-xxxxx-xxxxx-xx-xx" />  
</appSettings>
```

Replace the "x" characters with your actual key values.

Please note that this method requires you to manually add the key to each Sharepoint application.