
SQL Edit Web Part

© AMREIN ENGINEERING AG

Version 1.0.14

March 2013

AE SQL Edit Web Part

LastName:
Marcuse

FirstName:
Hugo

City:
Zurich

BirthDate:
1/27/1966 

Vegetarian:

Salary:
6800

Notes:
marcuse@hotmail.com

Description

The SQL Edit Web Part allows to create, edit and delete SQL database records. The Web Part can be used with Windows Sharepoint Services V3, MOSS.2007 and Sharepoint 2010

The following parameters can be configured:

- Database Connection String (supports both SQL Server and Windows Integrated Security)
- SQL Select statement

Prerequisites

Before you attempt to install the solutions you need to make sure that you have the following installed on your server(s):

- Microsoft Office SharePoint Server 2007, WSS 3.0 or Sharepoint 2010

Installation

Manual Installation

1. download and unpack the **AESQLEditWebpart.zip** file.
The ZIP archive contains the SQLEditWebpart.dll and the AESQLEdit.webpart files.
2. drop the **AESQLEditWebpart.dll** either into the SPS web application bin directory or into the GAC of your Sharepoint server (c:\windows\assembly).
3. add the following line to the "<SafeControls>" section of your Web.Config file.
Please make sure that the line is added as one single line (no line breaks):

```
<SafeControl Assembly="AESQLEditWebPart, Version=1.0.0.0, Culture=neutral,
PublicKeyToken=074c4c8c7752d686" Namespace="AESQLEditWebPart" TypeName="*" Safe="True" />
```

4. from the top site go to "Site Actions/Site Settings/Modify All Site Settings/Galleries/Web Parts" and use the "Upload" menu option to upload the **AESQLEdit.webpart** file.

Automatic Installation

1. Unpack the **AESQLEditWebpart.wsp** and **Install.bat** files from the Zip Archive and place the 2 files onto your Sharepoint Server.
2. Add the Solution by either running **Install.bat** (for Sharepoint 2007) or **install2010.bat** for Sharepoint 2010) by manually entering:
`stsadm -o addsolution -filename AESQLEditwebpart.wsp`
3. Deploy the solution by navigating with your browser to "Central Administration > System Settings > Farm Management > Manage farm solutions":

Microsoft SharePoint 2010 Central Administration ▶ System Settings

- Central Administration
- Application Management
- System Settings**
- Monitoring
- Backup and Restore
- Security
- Upgrade and Migration

- Servers**
Manage servers in this farm | Manage services on server
- E-Mail and Text Messages (SMS)**
Configure outgoing e-mail settings | Configure incoming e-mail settings | Configure mobile
- Farm Management**
Configure alternate access mappings | Manage farm features | **Manage farm solutions** | Manage user solutions | Configure privacy options | Configure cross-firewall access zone

4. You should now see the **AESQLEditWebpart.wsp** in the farm's solution store:

Microsoft SharePoint 2010 Central Administration ▶ Solution Management

This page has a list of the Solutions in the farm.

Name	Status	Deployed To
aegooglemapwebpart.wsp	Not Deployed	None
aestaffdirectorywebpart.wsp	Deployed	http://bto-web1-cd/
aesurveywebpart.wsp	Deployed	http://bto-web1-cd/
aesqleditwebpart.wsp	Not Deployed	None

Click on "**AESQLEditWebpart.wsp**" to deploy the solution:

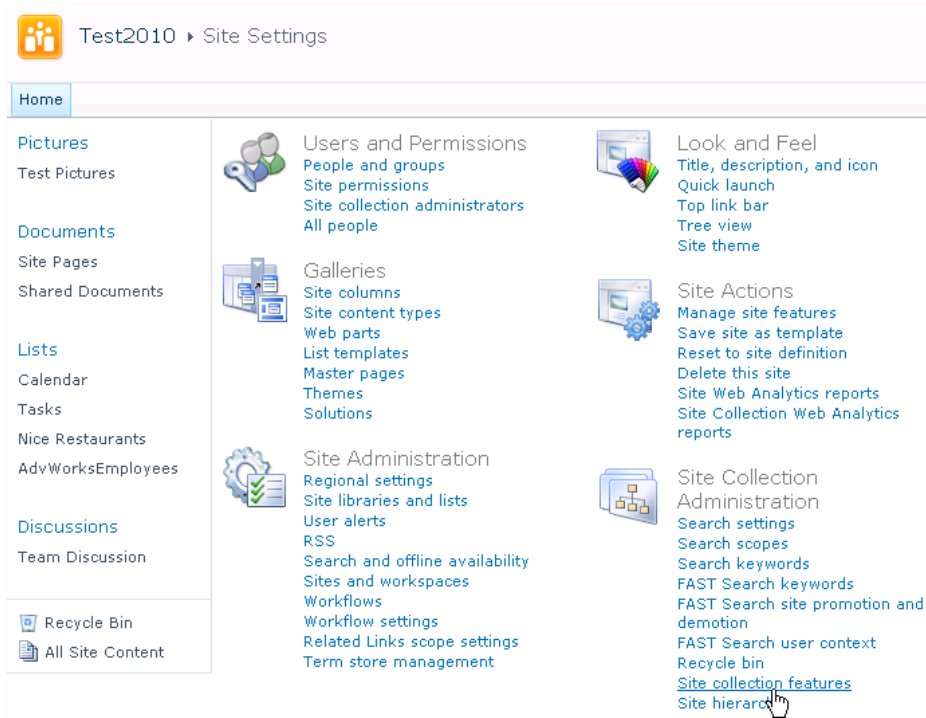
Microsoft SharePoint 2010 Central Administration ▶ Solution Properties

- Central Administration
- Application Management
- System Settings
- Monitoring
- Backup and Restore
- Security
- Upgrade and Migration
- General Application Settings

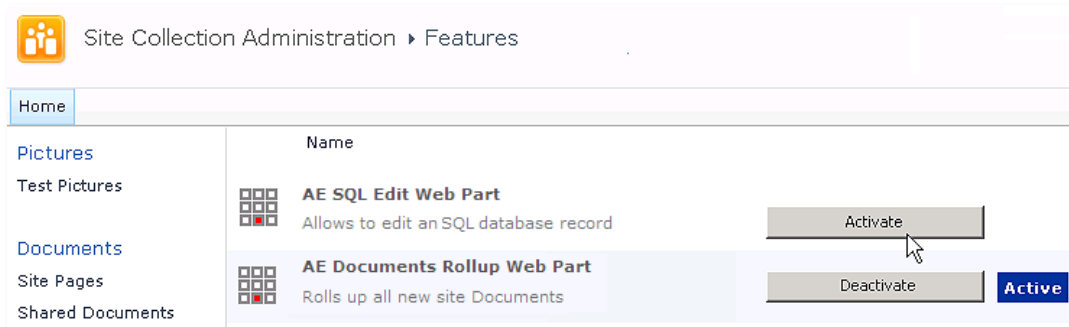
[Deploy Solution](#) | [Remove Solution](#) | [Back to Solutions](#)

Name:	aesqleditwebpart.wsp
Type:	Core Solution
Contains Web Application Resource:	Yes
Contains Global Assembly:	Yes
Contains Code Access Security Policy:	No
Deployment Server Type:	Front-end Web server
Deployment Status:	Not Deployed
Deployed To:	None

5. Proceed to activate the feature by navigating to the "Site Actions/Site Settings" page in your top-level site:



Choose "Site collection features" to navigate to the Site Collection Features page:

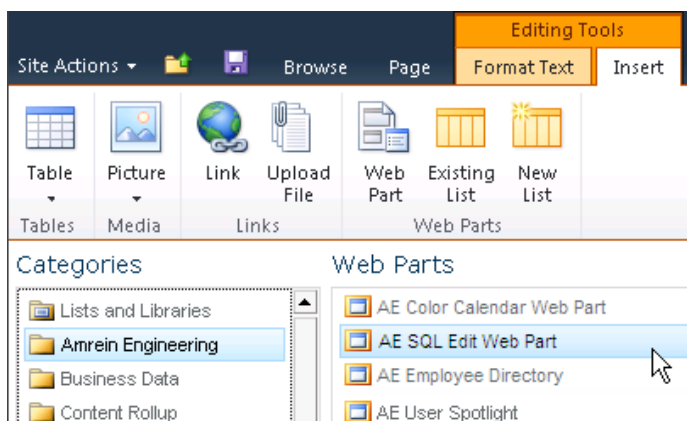


Activate the "AE List Rotator Web Part" feature

Adding the Web Part to a Page

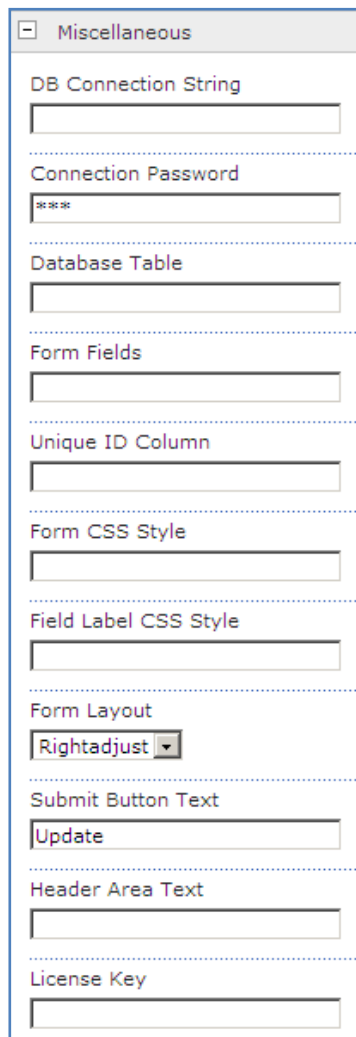
Navigate to a page where you would like to place the web part and choose "Site Actions/Edit Page"

1. Add the web part to the appropriate zone. The web part is listed in the "Amrein Engineering" gallery section :



Web Part Configuration

Configure the following Web Part properties in the Web Part Editor "Miscellaneous" pane section as needed:



The image shows a screenshot of the 'Miscellaneous' configuration pane in a Web Part Editor. The pane is titled 'Miscellaneous' and contains several fields for configuration:

- DB Connection String: A text input field.
- Connection Password: A text input field with masked characters (asterisks).
- Database Table: A text input field.
- Form Fields: A text input field.
- Unique ID Column: A text input field.
- Form CSS Style: A text input field.
- Field Label CSS Style: A text input field.
- Form Layout: A dropdown menu set to 'Rightadjust'.
- Submit Button Text: A text input field containing 'Update'.
- Header Area Text: A text input field.
- License Key: A text input field.

- **DB Connection String (SQL Server):**

- if you use SQL Server authentication, enter the connection string as follows:

UID=**uuu**;Initial Catalog=**database**;Data Source=**servername**

where

uuu = SQL Server User Account

database = the database you want to connect to

servername = the name of the SQL Server

Example:

UID=sa;Initial Catalog=Northwind;Data Source=TestSQL;

Please note that the password is entered in the *Connection Password* field for security reasons.

- if you use Windows authentication, enter the connection string as follows:

Initial Catalog=**database**;Data Source=**servername**;Integrated Security=SSPI;

Example:

Initial Catalog=Northwind;Data Source=TestSQL;Integrated Security=SSPI;

- **Connection Password:** if you use SQL Server authentication, enter the User account password into this field. It will be automatically encrypted for security reasons.

- **Database Table:** enter the name of the database table to be edited
- **Unique ID Column:** enter the name of the database table column used as the unique ID
Example: `EmployeeID`
- **Form Fields:** enter the database table column names to be displayed in the form
Example: `EmployeeID,LastName,FirstName,City,ZIP,BirthDate,Vegetarian,Salary,Notes`
- **Unique ID Column:** enter the name of the database table column that is passed from the SQL Query Viewer web part via the page URL.
- **Lookup Columns:** allows to set up Lookup dropdown boxes

by entering the table column name, followed by the SQL statement to populate the dropdown box:

```
Column1=SELECT DisplayValue,TransmittedValue FROM Table;
Column2=SELECT...
```

(separate multiple dropdowns with semicolons)

Example:

```
PriceCode=SELECT PriceCode,Amount FROM Price
```

- **Form CSS Style:**
enter the desired CSS style for the Form container:
Example: `width:250px;border:3px solid orange;background-color:#ffffcc`
- **Field Label CSS Style:**
enter the desired CSS style for the form field labels:
Example: `color:brown;font-weight:bold`
- **Form Layout:** choose the desired labels/form fields layout
- **Submit Button Text:** enter the name of the Submit button caption
- **Header Area Text:** enter the optional text to be displayed at the top of the form
- **License Key:**
enter your Product License Key (as supplied after purchase of the "SQL Edit Web Part" license key). Leave this field empty if you are using the free 30 day evaluation version or if you choose one of the License Activation described below.

License Activation

You have the following 3 options to enter your License Key:

1. Enter the License Key into the corresponding "License Key" field in the web part configuration pane (See description above).

2. WSP Solution Deployment:

Add the **License.txt** file (as supplied by AMREIN ENGINEERING after having purchased a license) to the Solution at the following location:

```
c:\Program Files\Common Files\Microsoft Shared\Web Server Extensions\14\template\features\AESQLEditWebpart
```

3. Manual Deployment:

Add the License Key to your web.config (typically found at c:\inetpub\wwwroot\wss\virtualdirectories\80) <appSettings> section as follows:

```
<appSettings>
  .
  .
  <add key="AESE" value="AESE-x-xxxxx-xxxxx-xx-xx" />
</appSettings>
```

Replace the "x" characters with your actual key values.

Please note that this method requires you to manually add the key to each Sharepoint application.