
SQL Query Viewer

Web Part

Sharpoint 2010 Installation Instructions

© AMREIN ENGINEERING AG

June 2011

Northwind Suppliers			
CompanyName	City	Phone	Homepage
Aux joyeux ecclésiastiques	Paris	(1) 03.83.00.68	http://www.joyeux.fr
Bigfoot Breweries	Bend	(503) 555-9931	http://www.bigfoot.com
Cooperativa de Quesos 'Las Cabras'	Oviedo	(98) 598 76 54	http://www.cabras.es
Escargots Nouveaux	Montceau	85.57.00.07	
Exotic Liquids	London	(171) 555-2222	http://www.amrein.com
Forêts d'érables	Ste-Hyacinthe	(514) 555-2955	
Formaggi Fortini s.r.l.	Ravenna	(0544) 60323	http://fortini.it
Gai pâturage	Annecy	38.76.98.06	
G'day, Mate	Sydney	(02) 555-5914	
Grandma Kelly's Homestead	Ann Arbor	(313) 555-5735	http://www.kellys.com

1 2 3
29 record(s)

Description

The SQL Query Viewer Web Part allows to query external SQL Server databases and displays the result as a pageable list without having to resort to Sharepoint Designer.

The **Enterprise version** adds OLE-DB and ODBC data source support (MS Access, Excel, CSV, Oracle etc.), allows to create Web Part connections (row filters etc.), sort columns and define search filters.

The Web Part can be used with Windows Sharepoint Services V3, MOSS 2007 and Sharepoint 2010.

The following parameters can be configured:

- Database Connection String (supports both SQL Server and Windows Integrated Security)
- SQL Select statement or Stored Procedure
- Number of rows displayed per page
- Display of column totals
- Sort Filters
- Column Sorting
- Column Formatting
- dynamic parameters can be passed to the SQL Query via URL parameters and web part connections
- Export data to Excel/CSV

Prerequisites

Before you attempt to install the solutions you need to make sure that you have the following installed on your server(s):

- Windows SharePoint Services 3.0, Microsoft Office SharePoint Server 2007 or Sharepoint 2010

Installation

Manual Installation

1. download and unpack the **AESQLWebpart.zip** file.
The ZIP archive contains the AESQLWebpart.dll and the AESQL.webpart files.
2. drop the AESQLWebpart.dll either into the SPS web application bin directory or into the GAC of your Sharepoint server (c:\windows\assembly).
3. add the following line to the "<SafeControls>" section of your Web.Config file.
Please make sure that the line is added as one single line (no line breaks):

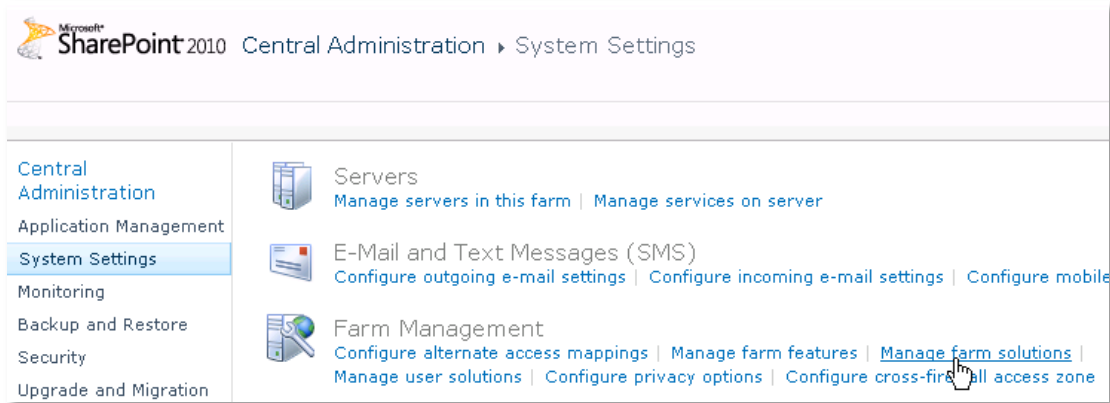
```
<SafeControl Assembly="AESQLWebpart, Version=1.0.0.0, Culture=neutral,
PublicKeyToken=3c00ea9a41262cc3" Namespace="AESQLWebpart" TypeName="*" Safe="True" />
```

4. from the top site go to "Site Actions/Site Settings/Modify All Site Settings/Galleries/Web Parts"
5. use the "Upload" menu option to upload the **AESQL.webpart** file.

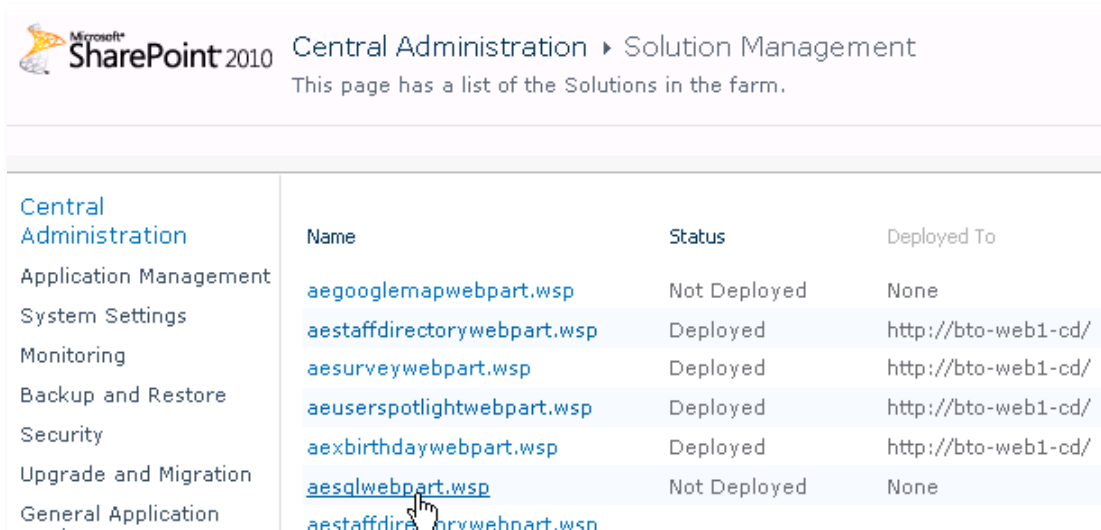
Automatic Installation

1. Unpack the **AESQLWebpart.wsp** and **Install.bat** files from the Zip Archive and place the 2 files onto your Sharepoint Server.
2. Add the Solution by either running **Install2010.bat** or manually entering:
stsadm -o addsolution -filename AESQLWebpart.wsp

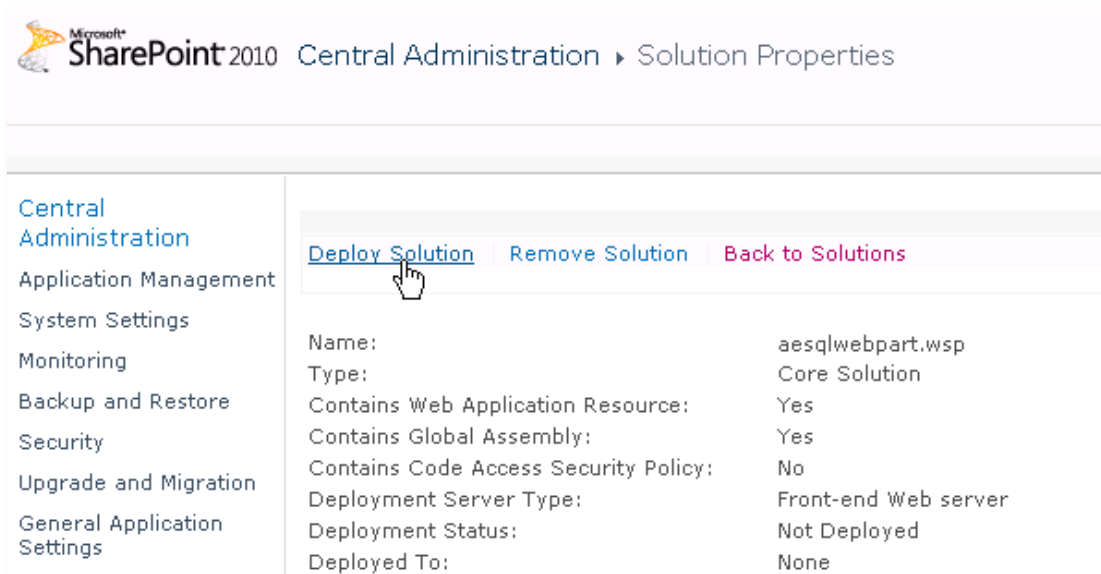
- Deploy the solution by navigating with your browser to “Central Administration > System Settings > Farm Management > Manage farm solutions”:



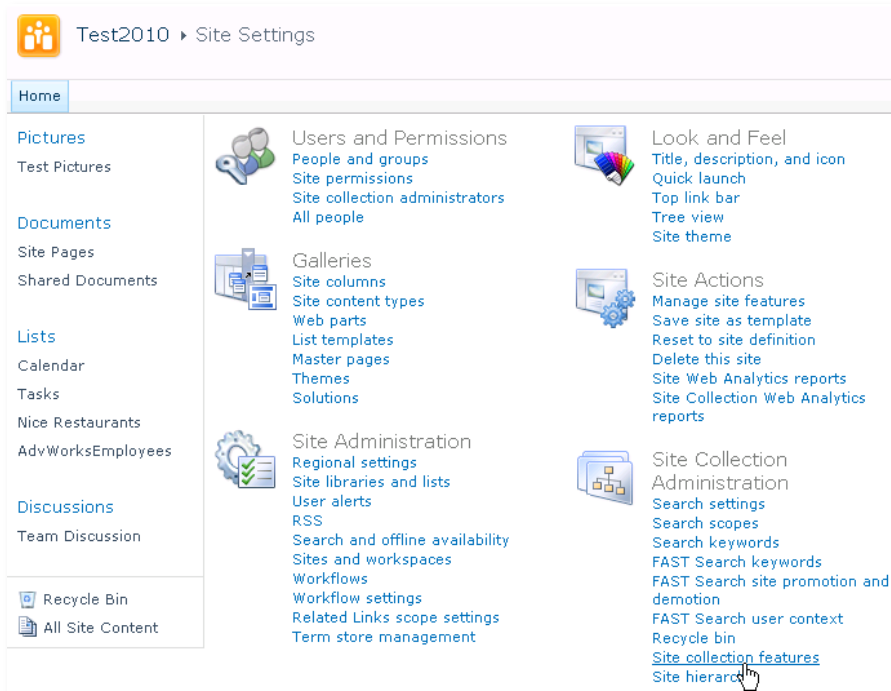
- You should now see the **AESQLWebpart.wsp** in the farm’s solution store:



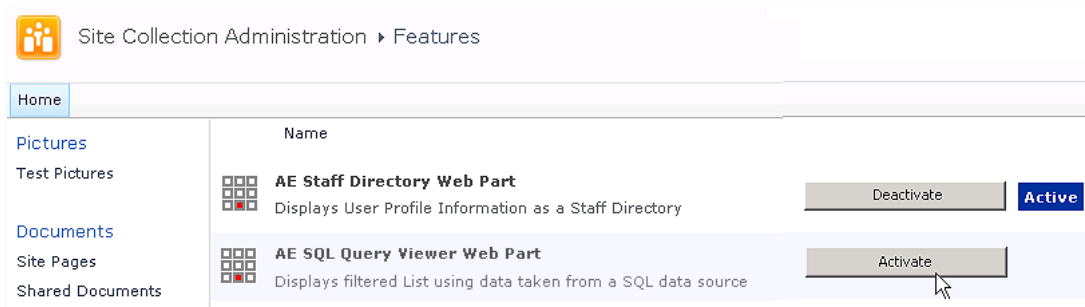
Click on “AESQLWebpart.wsp” to deploy the solution:



5. Proceed to activate the feature by navigating to the "Site Actions/Site Settings" page in your top-level site:



Choose "Site collection features" to navigate to the Site Collection Features page:

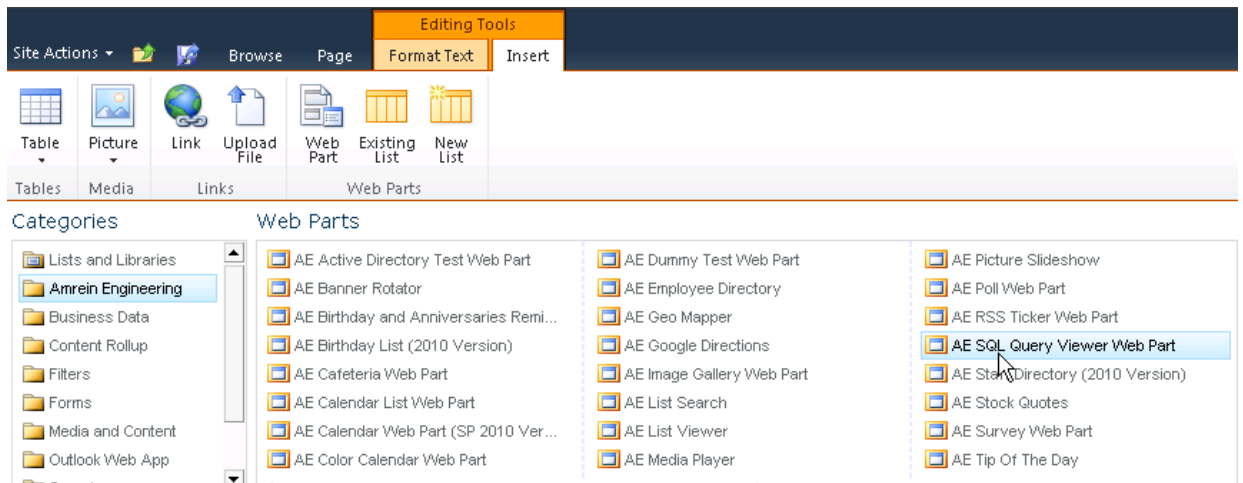


Activate the "AE SQL Chart Web Part" feature

Adding the Web Part to a Page

Navigate to a page where you would like to place the web part and choose "Site Actions/Edit Page"

Add the web part to the appropriate zone. The web part is listed in the "Amrein Engineering" gallery section :



License Activation

You have the following 3 options to enter your License Key:

1. Enter the License Key into the corresponding "License Key" field in the web part configuration pane (See Description above).

2. WSP Solution Deployment:

Add the **License.txt** file (as supplied by AMREIN ENGINEERING after having purchased a license) to the Solution at the following location:

```
c:\Program Files\Common Files\Microsoft Shared\Web Server Extensions\14\template\features\AESQLWebpart
```

3. Manual Deployment:

Add the License Key to your web.config (typically found at c:\inetpub\wwwroot\wss\virtualdirectories\80) <appSettings> section as follows:

```
<appSettings>  
  <add key="AESV" value="AESV-x-xxxxx-xxxxx-xx-xx" />  
</appSettings>
```

Replace the "x" characters with your actual key values.

Please note that this method requires you to manually add the key to each Sharepoint application.