
“Spotlight On” Web Part

Enterprise Version

© AMREIN ENGINEERING AG

Version 1.1

January 2010

Spotlight On ▾



Fred Miller
Fred joined our company 2 years ago as a technical assistant. In the meantime, he successfully passed several Microsoft exams and is well on his way towards becoming a Microsoft Certified Systems Engineer. Fred specializes in Microsoft Exchange.

[» Details..](#)

Description

The "Spotlight On.." Web Part selects a random entry from the specified Sharepoint Library and displays a picture, a title and an abstract of the selected person or item.

The following parameters can be configured:

- the Sharepoint Library
- the List fields corresponding to the picture, title, abstract and detail link
- enable or suppress the "Details.." URL.
- show a new entry every day or on every page refresh

This allows you to display random data contained in any Sharepoint List by specifying the desired Sharepoint List name and the desired list column names.

Prerequisites

Before you attempt to install the solutions you need to make sure that you have the following installed on your server(s):

- Windows SharePoint Services 3.0, Microsoft Office SharePoint Server 2007 or Sharepoint 2010

Installation

Manual Installation

1. download and unpack the **AESpotlightWebpart.zip** file.
The ZIP archive contains the SpotlightWebpart.dll and the AESpotlight.webpart files.
2. drop the **SpotlightWebpart.dll** either into the SPS web application bin directory or into the GAC of your Sharepoint server (c:\windows\assembly).
3. add the following line to the "<SafeControls>" section of your Web.Config file.
Please make sure that the line is added as one single line (no line breaks):

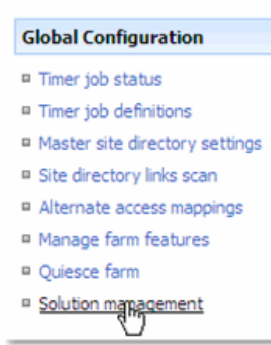
```
<SafeControl Assembly="SpotLightWebpart, Version=1.0.0.0, Culture=neutral,
PublicKeyToken=77e307535c618b04" Namespace="SpotLightWebpart" TypeName="*" Safe="True" />
```

4. from the top site go to "Site Actions/Site Settings/Modify All Site Settings/Galleries/Web Parts"
5. use the "Upload" menu option to upload the AESpotlight.webpart file.

Automatic Installation

1. Unpack the **AESpotlightWebpart.wsp** and **Install.bat** files from the Zip Archive and place the 2 files onto your Sharepoint Server.
2. Add the Solution by either running **Install.bat** (WSS 3.0 or MOSS 2007) or **Install2010.bat** (Sharepoint 2010) or by manually entering:
`stsadm -o addsolution -filename AESpotlightwebpart.wsp`

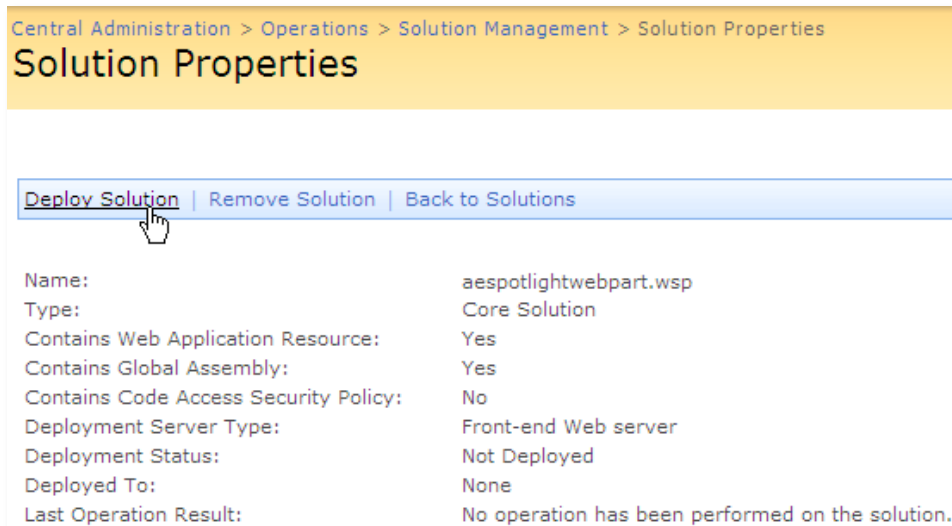
3. Deploy the solution by navigating with your browser to “Central Administration->Operations->Solution Management”:



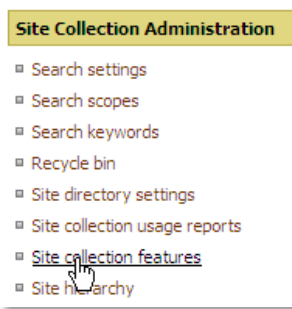
4. You should now see the **AESpotlightWebpart.wsp** in the farm’s solution store:



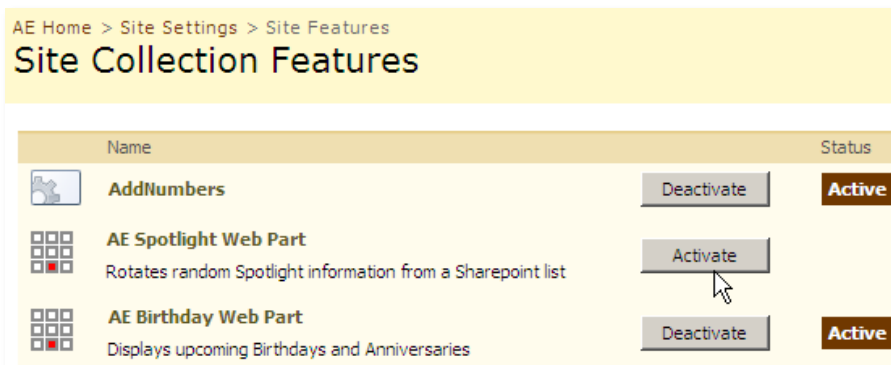
Click on “**AESpotlightWebpart.wsp**” to deploy the solution:



5. Proceed to activate the feature by navigating to the "Site Actions/Site Settings" page in your top-level site:



Choose "Site collection features" to navigate to the Site Collection Features page:

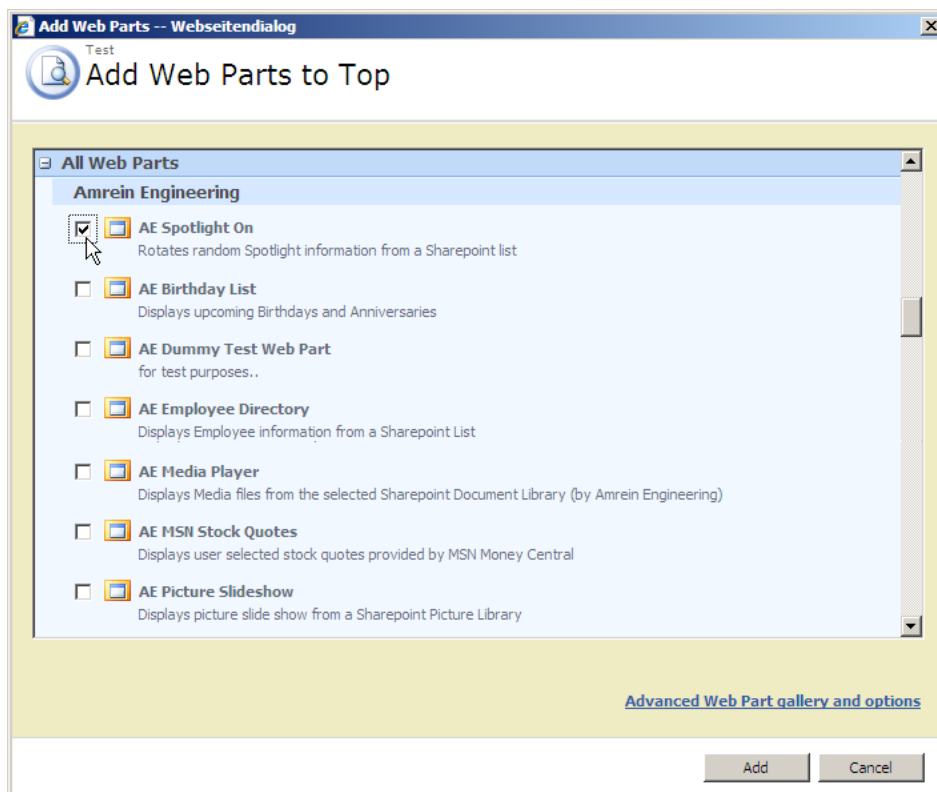


Activate the "AE Spotlight Web Part" feature

Adding the Web Part to a Page

Navigate to a page where you would like to place the web part and choose "Site Actions/Edit Page"

Add the web part to the appropriate zone. The web part is listed in the "Amrein Engineering" gallery section :



License Activation

You have the following 3 options to enter your License Key:

1. Enter the License Key into the corresponding “**License Key**” field in the web part configuration pane (see Description above).
2. **WSP Solution Deployment:**
Add the **License.txt** file (as supplied by AMREIN ENGINEERING after having purchased a license) to the Solution at the following location:

```
c:\Program Files\Common Files\Microsoft Shared\Web Server  
Extensions\12\template\features\AESpotlightWebpart
```

3. **Manual Deployment:**
Add the License Key to your web.config (typically found at c:\inetpub\wwwroot\wss\virtualdirectories\80) **<appSettings>** section as follows:

```
<appSettings>  
  <add key="AES0" value="AES0-x-xxxxx-xxxxx-xx-xx" />  
</appSettings>
```

Replace the “x” characters with your actual key values.

Please note that this method requires you to manually add the key to each Sharepoint application.