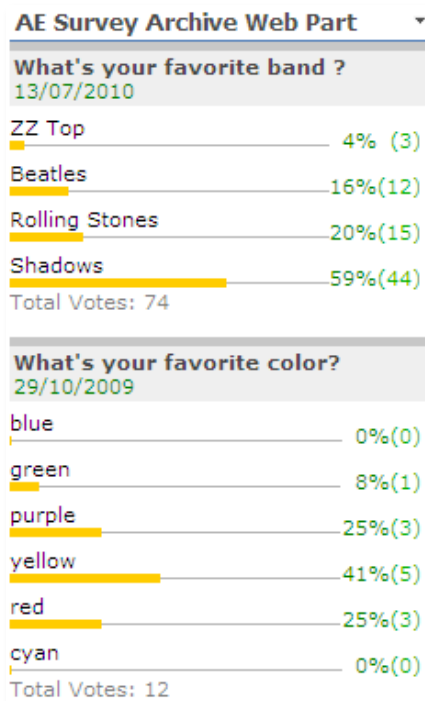

Quick Survey Archive Web Part

© AMREIN ENGINEERING AG

Version 1.0

July 2010



Description

The Quick Survey Archive Web Part allows to list past user polls/votings. The poll results are displayed as a graphical pie or bar chart.

The Web Part can be used both with Windows Sharepoint Services V3, MOSS and Sharepoint 2010.

Prerequisites

Before you attempt to install the solutions you need to make sure that you have the following installed on your server(s):

- Microsoft Office SharePoint Server 2007, WSS 3.0 or Sharepoint 2010

Installation

Manual Installation

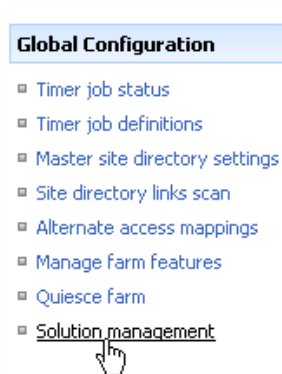
1. download and unpack the **AESurveyArchiveWebpart.zip** file.
The ZIP archive contains the AESurveyArchiveWebpart.dll and the AESurveyArchive.webpart files.
2. drop the **AESurveyArchiveWebpart.dll** either into the SPS web application bin directory or into the GAC of your Sharepoint server (c:\windows\assembly).
3. add the following line to the "<SafeControls>" section of your Web.Config file.
Please make sure that the line is added as one single line (no line breaks):

```
<SafeControl Assembly="AESurveyArchiveWebpart, Version=1.0.0.0, Culture=neutral,
PublicKeyToken=0f2f969af5d53a0a" Namespace="AESurveyArchiveWebpart" TypeName="*"
Safe="True" />
```

4. from the top site go to "Site Actions/Site Settings/Modify All Site Settings/Galleries/Web Parts"
5. use the "Upload" menu option to upload the **AESurveyArchive.webpart** file.

Automatic Installation

1. Unpack the **AESurveyArchiveWebpart.wsp** and **Install.bat** files from the Zip Archive and place the 2 files onto your Sharepoint Server.
2. Add the Solution by either running **Install.bat** (**install2010.bat** for SP2010) or manually entering:
stsadm -o addsolution -filename AESurveyArchivewebpart.wsp
3. Deploy the solution by navigating with your browser to "Central Administration->Operations->Solution Management":



4. You should now see the **AESurveyArchiveWebpart.wsp** in the farm's solution store:

Central Administration > Operations > Solution Management

Solution Management

This page has a list of the Solutions in the farm.

Name	Status	Deployed To
aelistviewwebpart.wsp	Deployed	http://ae24:1256/,...
aemediaplayerwebpart.wsp	Deployed	http://ae24:1256/,...
aepodcastwebpart.wsp	Deployed	http://ae24:1256/,...
aesurveyarchivewebpart.wsp	Not Deployed	None
aesurveywebpart.wsp	Deployed	http://ae24:1256/,...

Click on “AESurveyArchiveWebpart.wsp” to deploy the solution:

Central Administration > Operations > Solution Management > Solution Properties

Solution Properties

[Deploy Solution](#) | [Remove Solution](#) | [Back to Solutions](#)

Name: aesurveyarchivewebpart.wsp
 Type: Core Solution
 Contains Web Application Resource: Yes
 Contains Global Assembly: Yes
 Contains Code Access Security Policy: No
 Deployment Server Type: Front-end Web server
 Deployment Status: Not Deployed
 Deployed To: None
 Last Operation Result: No operation has been performed on the solution.

- Proceed to activate the feature by navigating to the “Site Actions/Site Settings” page in your top-level site:

Site Collection Administration

- ▣ Search settings
- ▣ Search scopes
- ▣ Search keywords
- ▣ Recycle bin
- ▣ Site directory settings
- ▣ Site collection usage reports
- ▣ [Site collection features](#)
- ▣ Site hierarchy

Choose “Site collection features” to navigate to the Site Collection Features page:

AE Home > Site Settings > Site Features

Site Collection Features

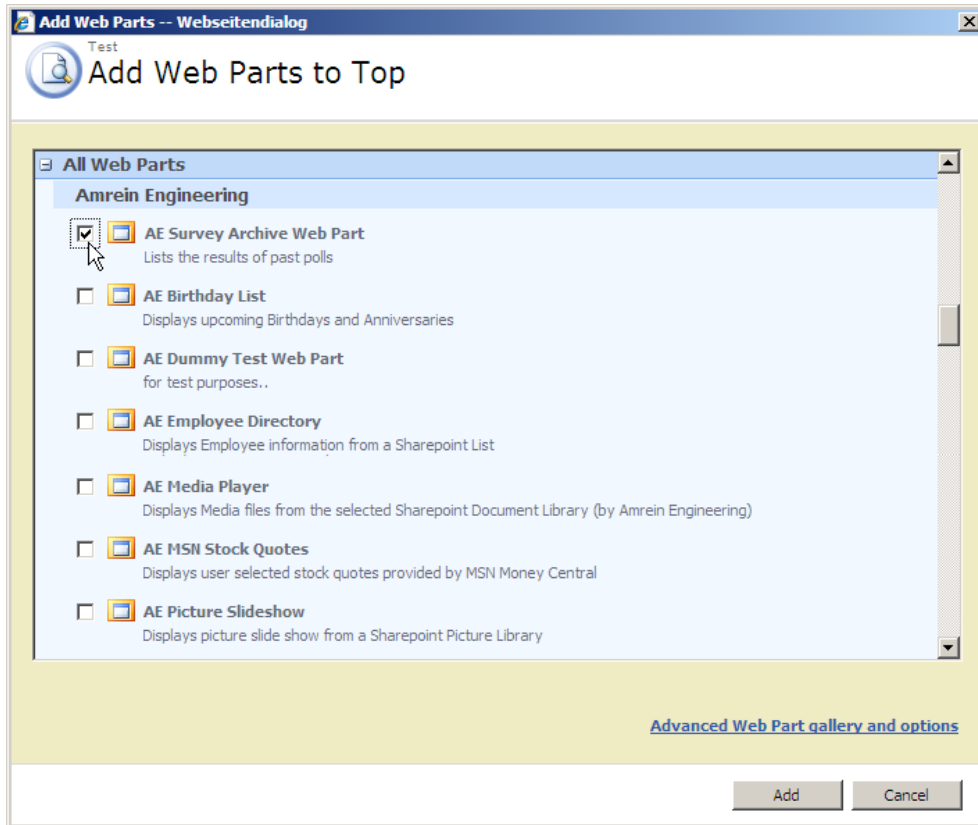
Name	Status
 AddNumbers	Deactivate Active
 AE Survey Web Part Allows to easily create simple user polls	Deactivate Active
 AE Survey Archive Web Part Lists the results of past Quick Survey polls	Activate

Activate the “AE Survey Archive Web Part” feature

Adding the Web Part to a Page

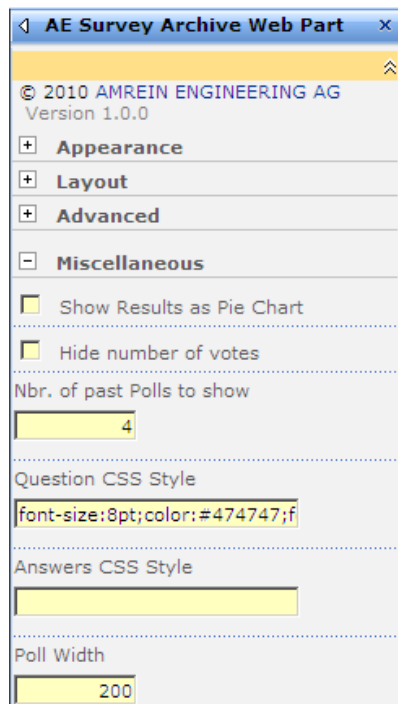
Navigate to a page where you would like to place the web part and choose "Site Actions/Edit Page"

1. Add the web part to the appropriate zone. The web part is listed in the "**Amrein Engineering**" gallery section :



Web Part Configuration

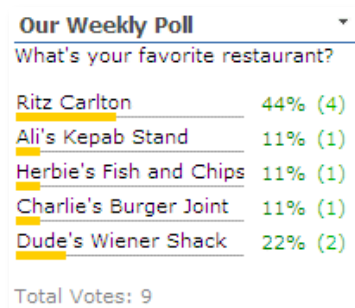
Configure the following Web Part properties in the Web Part Editor "Miscellaneous" pane section as needed:



The screenshot shows the configuration pane for the 'AE Survey Archive Web Part'. The 'Miscellaneous' section is expanded, showing the following settings:

- © 2010 AMREIN ENGINEERING AG
Version 1.0.0
- Appearance
- Layout
- Advanced
- Miscellaneous
 - Show Results as Pie Chart
 - Hide number of votes
 - Nbr. of past Polls to show:
 - Question CSS Style:
 - Answers CSS Style:
 - Poll Width:

- **Show Results as Pie Chart:** check this box if you want to display the poll results as a pie chart. Leave this box unchecked if you rather want to display the results as a space saving bar chart:



- **Hide number of votes**
allows you to hide the number of votes submitted (only the percentage outcome is shown)
- **Nbr. of past Polls to show**
allows to select the number of past polls that are displayed. The polls are sorted descending by the Poll creation date. Active polls are not listed (Polls are considered to be active if their "Expires" date has not been passed yet).
- **Question CSS Style:**
enter the optional CSS style(s) for the Question text.
Example: **font:20px calibri;color:orange**
- **Answers CSS Style:** enter the optional CSS style(s) for the Answers text.
Example: **font:18px arial; color:green**
- **Poll Width:** enter the desired width (in pixels) of the Poll Web Part