

Twitter Web Part

Sharepoint 2010 Installation Instructions

© AMREIN ENGINEERING AG


Version 2.0


May 2013


AE Twitter Web Part

Enduser Sharepoint

#Sharepoint

 **Oliver Wirkus** @OWirkus 9m
SPUG Stuttgart bit.ly/11Vxtc1 | Next meeting with @JStappert (@Teamharmonie) and Hartmut John (@bridgingIT) | #SharePoint & Mobile

 **Erik Neumann** @Erik_Berlin 13m
#sharepoint June 2013 CU for SharePoint 2007 has been released: The product group released the June 2...
bit.ly/18w5CbV #twetbot

 **Erik Neumann** @Erik_Berlin 13m
#sharepoint June 2013 CU for SharePoint 2010 has been released: The product group released the June 2...
bit.ly/16cutxm #twetbot

Tweet #Sharepoint

Description

The "Twitter" Widget Web Part allows to display the Tweets of the specified Twitter search or Twitter user. The list is automatically updated in regular intervals.

The Web Part can be used with Windows WSS 3.0, MOSS 2007, Sharepoint 2010 and Sharepoint 2013.

Installation

Manual Installation

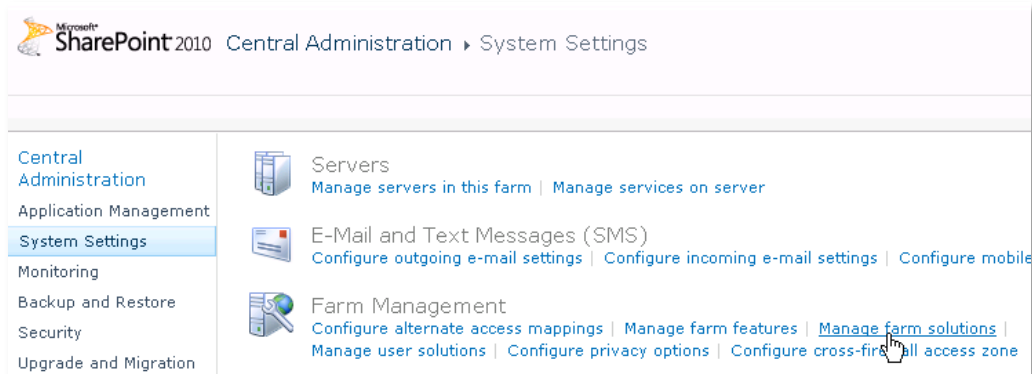
1. download and unpack the **AETwitterWebpartV2.zip** file.
The ZIP archive contains the AETwitterWebpart.dll and the AETwitter.webpart files.
2. drop the AETwitterWebpart.dll into the GAC of your Sharepoint server (c:\windows\assembly).
3. add the following line to the "<SafeControls>" section of your Web.Config file.
Please make sure that the line is added as one single line (no line breaks):

```
<SafeControl Assembly="AETwitterWebpart, Version=1.0.0.0, Culture=neutral,
PublicKeyToken=f0664a060858badd" Namespace="AETwitterWebpart" TypeName="*" Safe="True" />
```

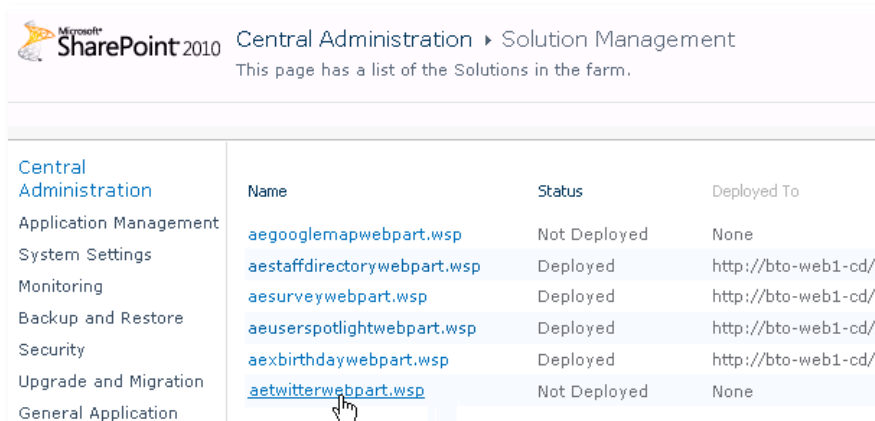
4. from the top site go to "Site Actions/Site Settings/Modify All Site Settings/Galleries/Web Parts"
5. use the "Upload" menu option to upload the AETwitter.webpart file.

Automatic Installation (recommended)

1. Unpack the **AETwitterWebpart.wsp** and **Install.bat** (**install2010.bat** for Sharepoint 2010 or **install2013.bat** for Sharepoint 2013) files from the Zip Archive and place the 2 files onto your Sharepoint Server.
2. Add the Solution by either running **Install.bat** or manually entering:
stsadm -o addsolution -filename AETwitterWebpart.wsp
3. Deploy the solution by navigating with your browser to "Central Administration > System Settings > Farm Management > Manage farm solutions"



4. You should now see the **AETwitterWebpart.wsp** in the farm's solution store:



Click on "AETwitterWebpart.wsp" to deploy the solution:

Microsoft SharePoint 2010 Central Administration > Solution Properties

Central Administration

Application Management

System Settings

Monitoring

Backup and Restore

Security

Upgrade and Migration

General Application Settings

[Deploy Solution](#) [Remove Solution](#) [Back to Solutions](#)

Name:	aetwitterwebpart.wsp
Type:	Core Solution
Contains Web Application Resource:	Yes
Contains Global Assembly:	Yes
Contains Code Access Security Policy:	No
Deployment Server Type:	Front-end Web server
Deployment Status:	Not Deployed
Deployed To:	None

5. Proceed to activate the feature by navigating to the "Site Actions/Site Settings" page in your top-level site:

Test2010 > Site Settings

Home

Pictures
Test Pictures

Documents
Site Pages
Shared Documents

Lists
Calendar
Tasks
Nice Restaurants
AdvWorksEmployees

Discussions
Team Discussion

Recycle Bin
All Site Content

Users and Permissions
People and groups
Site permissions
Site collection administrators
All people

Galleries
Site columns
Site content types
Web parts
List templates
Master pages
Themes
Solutions

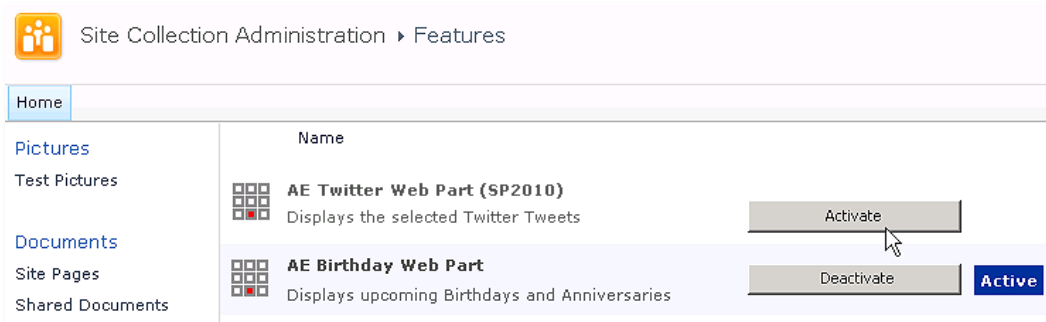
Site Administration
Regional settings
Site libraries and lists
User alerts
RSS
Search and offline availability
Sites and workspaces
Workflows
Workflow settings
Related Links scope settings
Term store management

Look and Feel
Title, description, and icon
Quick launch
Top link bar
Tree view
Site theme

Site Actions
Manage site features
Save site as template
Reset to site definition
Delete this site
Site Web Analytics reports
Site Collection Web Analytics reports

Site Collection Administration
Search settings
Search scopes
Search keywords
FAST Search keywords
FAST Search site promotion and demotion
FAST Search user context
Recycle bin
[Site collection features](#)
Site hierarchy

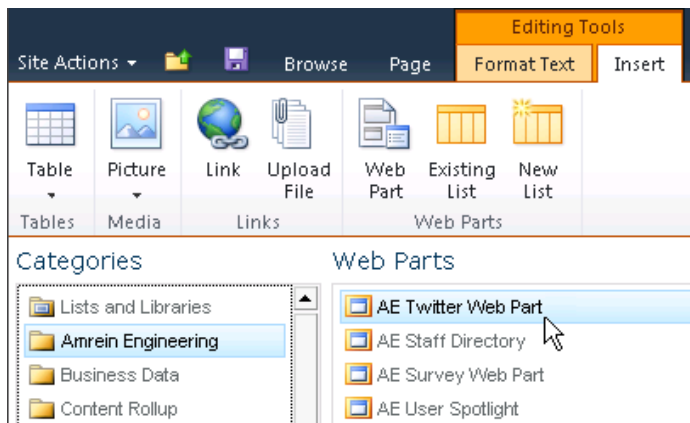
6. Choose "Site collection features" to navigate to the Site Collection Features page:



Activate the "AE Twitter Web Part" feature

Adding the Web Part to a Page

Navigate to a page where you would like to place the web part and choose "Site Actions/Edit Page"
Add the web part to the appropriate zone. The web part is listed in the "Amrein Engineering" gallery section:



Web Part Configuration

Configure the following Web Part properties in the Web Part Editor "Miscellaneous" pane section as needed:

- **Twitter Code:**
open the twitter.com internet page, log-in with your account and then choose "Settings" in the Header ("gear" icon) and the select "Widgets" in the lefthand menu. Choose "create new" and then configure the widget as needed:

Tweets about "#Sharepoint" ← Back to widget settings

Add any public Twitter timeline to your website using the tool below. Simply select your timeline source, options, and copy and paste the code in the HTML of your page.
For more information, read the [developer documentation](#).

Configuration

Search Query:

Options: Only show top Tweets
 Safe search mode Exclude sensitive content and profanity
 Auto-expand photos

Height:

Theme:

Link color:

For advanced visual options, please refer to the [customization documentation](#).

Opt-out of tailoring Twitter [?]

Preview

#Sharepoint

Patrik Bergman @patrikbergman 3m
Started linking to external #SharePoint 2010 #intranet training resources. What are your best resources for end users?

IP-TECH @iptech 4m
#SharePoint comme réseau social d'entreprise : une fausse bonne idée ? [journaldunet.com/solutions/rese...](#) via [@journaldunet](#) #socialnetwork #RSE
[Show Summary](#)

SharePoint Buzz @sharepointbuzz 7m
June 2013 CU for SharePoint 2013 Is delayed: June
Tweet #Sharepoint

``

Copy and paste the code into the HTML of your site.

By using Twitter Widgets, you agree to the [Developer Rules of the Road](#).

After having configured the widget, copy the HTML code at the bottom right corner and then paste it into the web part's "Twitter Code" setting.

- **Title:**
Enter an optional title to be displayed at the top of the list
- **Web Part height:**
enter the desired web part height in pixels
- **Use Dark Theme:**
either choose the "light" or the "dark" theme
- **Show Header:**
show or hide the widget header
- **Show Footer:**
show or hide the widget footer
- **Show Borders:**
show or hide the widget borders
- **Show Background Color :**
show or hide the widget's background color
- **Link Color:**
enter the desired hyperlink color as an #RRGGBB value
- **Border Color:**
enter the desired Frame color as an #RRGGBB values)

AE Twitter Web Part

© 2013 AMREIN ENGINEERING AG
Version 2.0.0

Appearance

Layout

Advanced

Miscellaneous

Twitter Code

``

Title

`<div style='font:12pt segoe ui;'`

Web Part height (px)

Use Dark Theme

Show Header

Show Footer

Show Borders

Show Background Color

Link Color

Border Color