

---

# User Spotlight Web Part


Sharepoint 2010 Enterprise Version

© AMREIN ENGINEERING AG

Version 1.0

June 2010

Spotlight On ▾



**Mike Miller**  
IT Support

Michael is a graduate of Sussex University (MA, economics, 1993) and the University of California at Los Angeles (MBA, marketing, 1996). He has also taken the courses "Multi-Cultural Selling" and "Time Management for the Sales Professional." He is fluent in Japanese and can read and write French, Portuguese, and Spanish.

**Office Phone:** (703) 321-9876  
**Cell Phone:** 77 333 44 99

[Visit My Site..](#)

---

## Description

The "User Spotlight On.." Web Part selects a random user entry from the SP 2010 User Profile Store and displays the selected user fields as specified in a freely configurable template.

The Web Part requires Windows Sharepoint Server 2010 (Standard or Enterprise)  
Please note that this web part is not compatible with Windows Sharepoint 2010 Foundation.

The following parameters can be configured:

- the template to select the desired User Profile properties
- an optional list of users to be excluded from the Spotlight rotation.
- show a new entry every day or on every page refresh

## Prerequisites

Before you attempt to install the solutions you need to make sure that you have the following installed on your server(s):

- Microsoft Office SharePoint Server 2010 Standard or Enterprise

## Installation

### Manual Installation

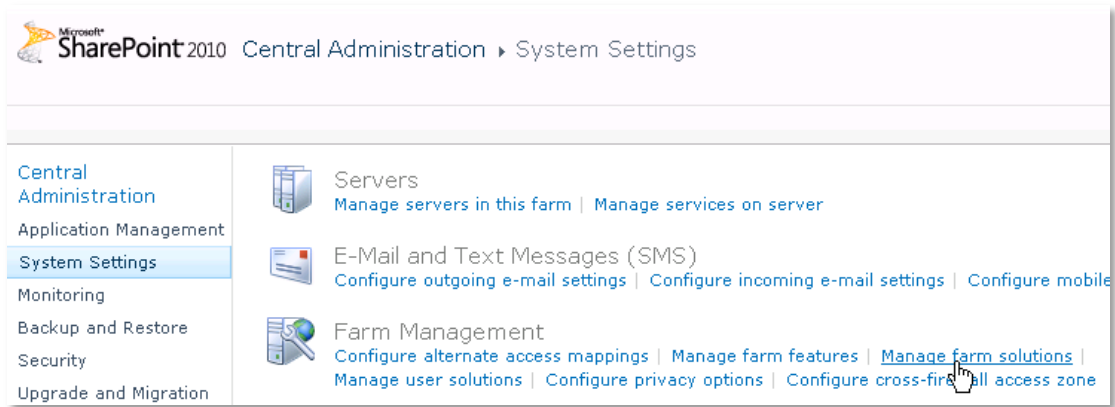
1. download and unpack the **AEUserSpotlight2010Webpart.zip** file.  
The ZIP archive contains the AEUserSpotlight2010Webpart.dll and the AEUserSpotlight2010.webpart files.
2. drop the AEUserSpotlight2010Webpart.dll into the GAC of your Sharepoint server (c:\windows\assembly).
3. add the following line to the "<SafeControls>" section of your Web.Config file.  
Please make sure that the line is added as one single line (no line breaks):

```
<SafeControl Assembly="AEUserSpotlight2010Webpart, Version=1.0.0.0, Culture=neutral,
PublicKeyToken=4d47cb475192d8ca" Namespace="AEUserSpotlight2010Webpart" TypeName="*" Safe="True"
/>
```

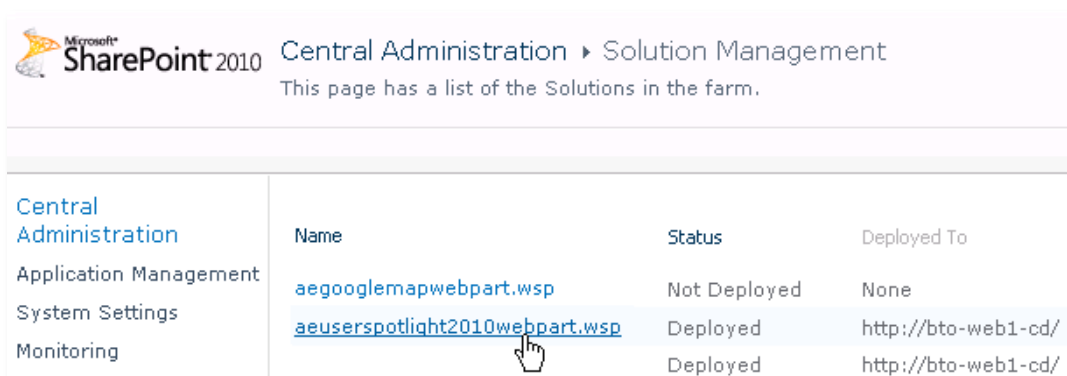
4. from the top site go to "Site Actions/Site Settings/Modify All Site Settings/Galleries/Web Parts"
5. use the "Upload" menu option to upload the AEUserSpotlight2010.webpart file.

### Automatic Installation

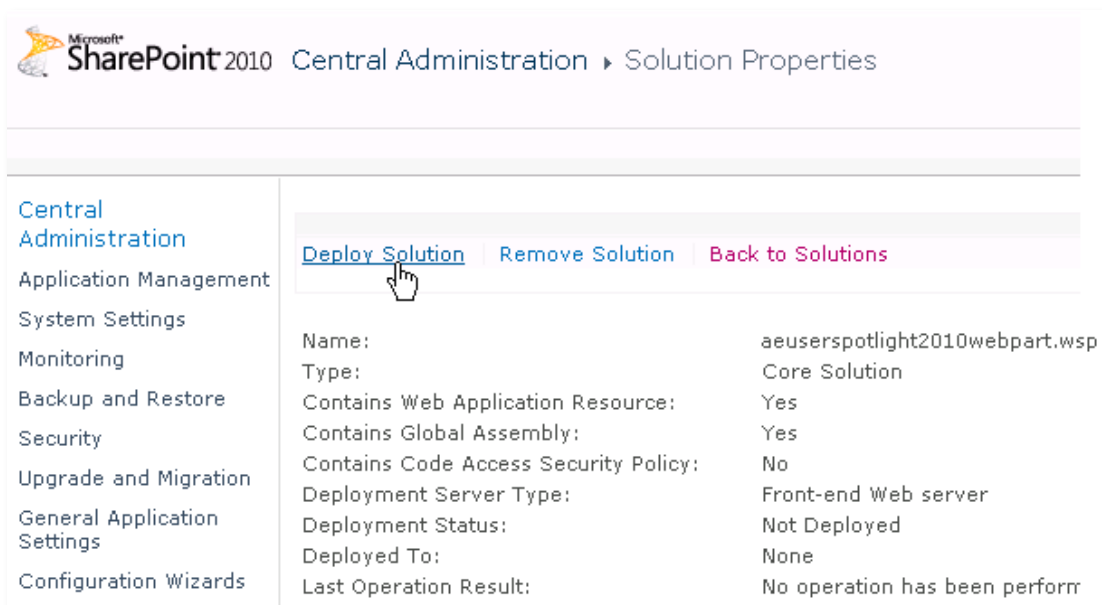
1. Unpack the **AEUserSpotlight2010Webpart.wsp** and **Install.bat** files from the Zip Archive and place the 2 files onto your Sharepoint Server.
2. Add the Solution by either running **Install.bat** or manually entering:  
`stsadm -o addsolution -filename AEUserSpotlight2010Webpart.wsp`
3. Deploy the solution by navigating with your browser to "Central Administration > System Settings > Farm Management > Manage farm solutions":



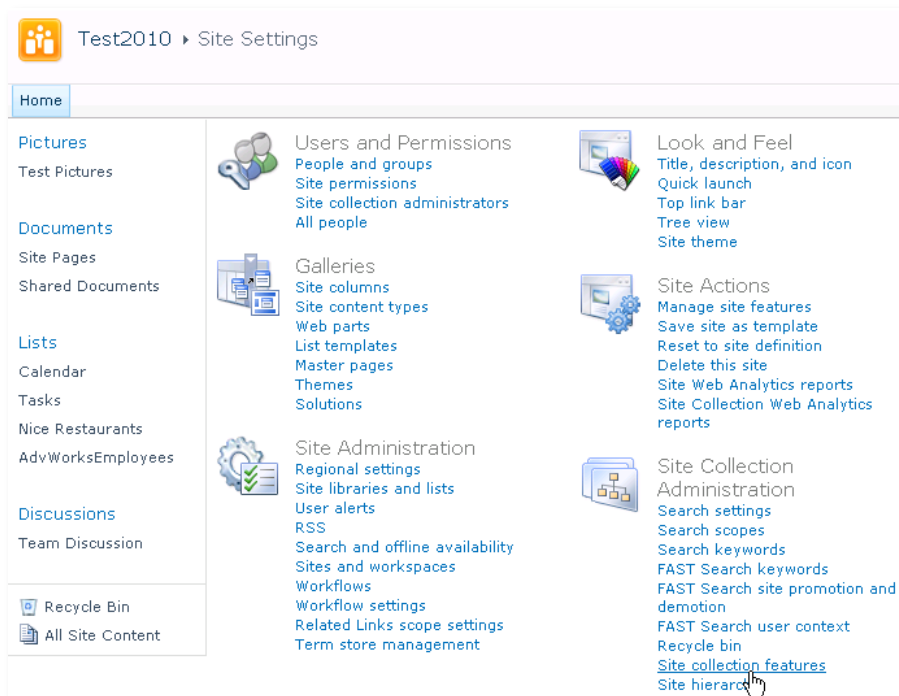
4. You should now see the **AEUserSpotlight2010Webpart.wsp** in the farm's solution store:



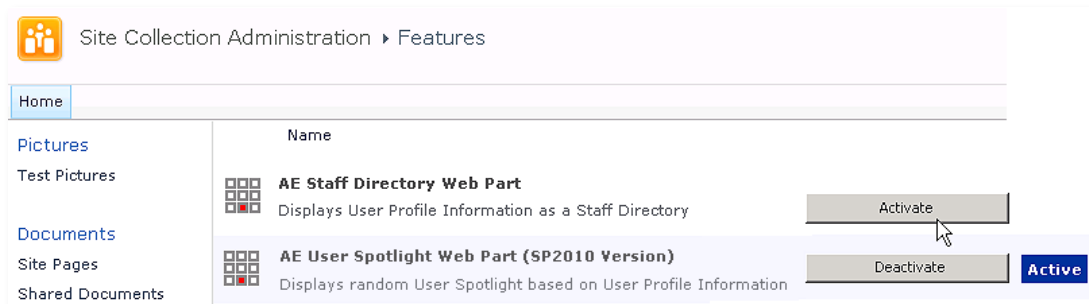
Click on "**AEUserSpotlight2010Webpart.wsp**" to deploy the solution:



5. Proceed to activate the feature by navigating to the "**Site Actions/Site Settings**" page in your top-level site:



Choose "Site collection features" to navigate to the Site Collection Features page:

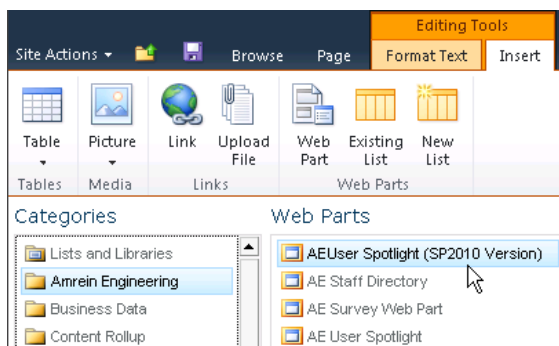


6. Activate the "AE User Spotlight Web Part" feature

## Adding the Web Part to a Page

Navigate to a page where you would like to place the web part and choose "Site Actions/Edit Page"

1. Add the web part to the appropriate zone. The web part is listed in the "Amrein Engineering" gallery section :



2. **Security Note:**

if you get the following error message: **"Only an administrator may enumerate through all user profiles"**, you will need to grant the application pool account(s) for the web application(s) „Manage User Profiles” permissions within the SSP. This ensures that the application pool is able to retrieve the list of user profiles. To assign this permission, access your active Shared Services Provider via Central Admin. From the „User Profiles and My Sites” group, click **“Personalization services permissions”**.

Add the „Manage User Profiles” permission to your application pool account(s).

## Web Part Configuration

Configure the following Web Part properties in the Web Part Editor "Miscellaneous" pane section as needed:

The screenshot shows the 'Miscellaneous' configuration pane for a web part. It includes the following fields and settings:

- Site Name:** A text box containing the word "current".
- Field Template:** A text box containing the HTML code: `<b>{FirstName} {LastName}</b>`.
- Text Layout:** A dropdown menu set to "Wrap".
- Use Image Thumbnails:** A checked checkbox.
- Show new Entry every day:** An unchecked checkbox.
- Show Profile of:** An empty text box.
- Users to be excluded:** A text box containing "AE24\paul;AE24\simon" and a blue ellipsis button to the right.
- License Key:** An empty text box.

- **Site Name:**
  - Enter the name of the site (Shared Services Provider) that contains the User Profile Store:
    - leave this field empty if the User Profile is in the default SSP
    - Enter "current" if the User Profile is in the current site
    - Enter the Site name to choose a specific SSP

- **Field Template:** Enter the User properties to be displayed (separated by semicolons). The following properties are available:

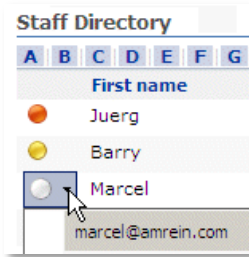
- |                 |                 |                      |
|-----------------|-----------------|----------------------|
| ▪ AccountName   | ▪ PictureURL    | ▪ SPS-Dotted-line    |
| ▪ FirstName     | ▪ UserName      | ▪ SPS-Peers          |
| ▪ LastName      | ▪ QuickLinks    | ▪ SPS-Responsibility |
| ▪ PreferredName | ▪ website       | ▪ SPS-skills         |
| ▪ workPhone     | ▪ workEmail     | ▪ SPS-PastProjects   |
| ▪ Office        | ▪ Assistant     | ▪ SPS-Interests      |
| ▪ Department    | ▪ CellPhone     | ▪ SPS-School         |
| ▪ Title         | ▪ Fax           | ▪ SPS-sipAddress     |
| ▪ Manager       | ▪ HomePhone     | ▪ SPS-Birthday       |
| ▪ AboutMe       | ▪ PersonalSpace | ▪ SPS-MySiteUpgrade  |
| ▪ Presence      |                 | ▪ SPS-HireDate       |

### Example:

```
{PictureURL}
<b>{FirstName} {LastName}</b>
<p style='margin-top:3px;margin-bottom:3px'><font color=gray>{Department}</font></p>
{AboutMe}
<div style='background-color:#ffcc00;padding:5px;margin-top:4px'>
<b>Office Phone:</b> {workPhone}<br>
<b>Cell Phone:</b> {CellPhone}
<p style='text-align:right;margin:0px'><a href='{PersonalSpace}'>Visit My Site..</a></p>
</div>
```

### Online Presence Information:

You can optionally add a presence indicator by adding the **Presence** column to the Field Template:



- **Text Layout:** specify the placing of the Text with respect to the Image:
  - Right
  - Wrap
  - Bottom



- **Use Image Thumbnails:** use the user image thumbnails as generated by Sharepoints. Uncheck this option if your user profile images have not been uploaded via Sharepoint.
- **Show new Entry every day:** shows a new entry on every day when clicked. Otherwise a new entry is displayed on every page refresh.
- **Show Profile of:** If you would like to display a static user spotlight, enter the account name of the user to be displayed.
- **Users to be excluded:** Enter the account names of the users that should not be included in the Spotlight rotation.
- **License Key:** enter your Product License Key (as supplied after purchase of the "Staff Directory Web Part" license key). Leave this field empty if you are using the free 30 day evaluation version or if you choose one of the License Activation described below.

## License Activation

You have the following 3 options to enter your License Key:

1. **Local:** Enter the License Key into the corresponding "License Key" field in the web part configuration pane

2. **WSP Solution Deployment:**

Add the **License.txt** file (as supplied by AMREIN ENGINEERING after having purchased a license) to the Solution at the following location:

```
c:\Program Files\Common Files\Microsoft Shared\Web Server  
Extensions\14\template\features\AEUserSpotlight2010Webpart
```

3. **Manual Deployment:**

Add the License Key to your web.config (typically found at c:\inetpub\wwwroot\wss\virtualdirectories\80) <appSettings> section as follows:

```
<appSettings>  
  <add key="AESU" value="AESU-x-xxxxx-xxxxx-xx-xx" />  
</appSettings>
```

Replace the "x" characters with your actual key values.

Please note that this method requires you to manually add the key to each Sharepoint application.