
YouTube Player Web Part

© AMREIN ENGINEERING AG

Version 1.0

December 2013

AE YouTube Player



▶ Albert Collins - If trouble was money
This performance is legendary, the master of the telecaster live 1990! Enjoy. - Borny
<https://www.facebook.com/bornyslivedelivery>
<https://www.youtube.com/watch?v=l0mPT97Vf2o>



▶ Albert Collins - Cold Cold Feeling, 1981
<http://solo-blues.blogspot.com/> The master of the Telecaster in his prime, with the original Icebreakers (A.C. Reed, Johnny B. Gayden, Casey Jones, Aaron Burton), doing a great cover of this T-Bone Walker's song.



▶ Albert Collins - My Woman Has A Black Cat Bone (HQ)
Live From Austin, TX - 28.10.1991. Technical details:
x 526 ΔC3 448 Khns XviD

Description

The YouTube Player Web Part either selects a random YouTube video, a specific video or a playlist from the specified Sharepoint Picture or Document Library or directly from YouTube.

The Web Part can also be used to display a single static video or a Youtube playlist by specifying a filename in the "Video Embed URL " parameter field.

The following parameters can be configured:

- Sharepoint Library containing the Youtube video URL(s)
- Single movie/movie rotation mode
- YouTube Player dimensions
- Display of Title and Description information taken from the Sharepoint Library or from YouTube
- Display of a Playlist for manual selection of the Youtube videos to be played back
- Web Part Connection to a Sharepoint List or Library

Prerequisites

Before you attempt to install the solutions you need to make sure that you have the following installed on your server(s):

- Windows SharePoint Services 3.0, Microsoft Office SharePoint Server 2007, Sharepoint 2010 or Sharepoint 2013

Installation

Manual Installation

1. download and unpack the **AEYoutubeWebpart.zip** file.
The ZIP archive contains the AEYoutubeWebpart.dll and the AEYoutube.webpart files.
2. drop the AEYoutubeWebpart.dll either into the SPS web application bin directory or into the GAC of your Sharepoint server (c:\windows\assembly).
3. add the following line to the "<SafeControls>" section of your Web.Config file.
Please make sure that the line is added as one single line (no line breaks):

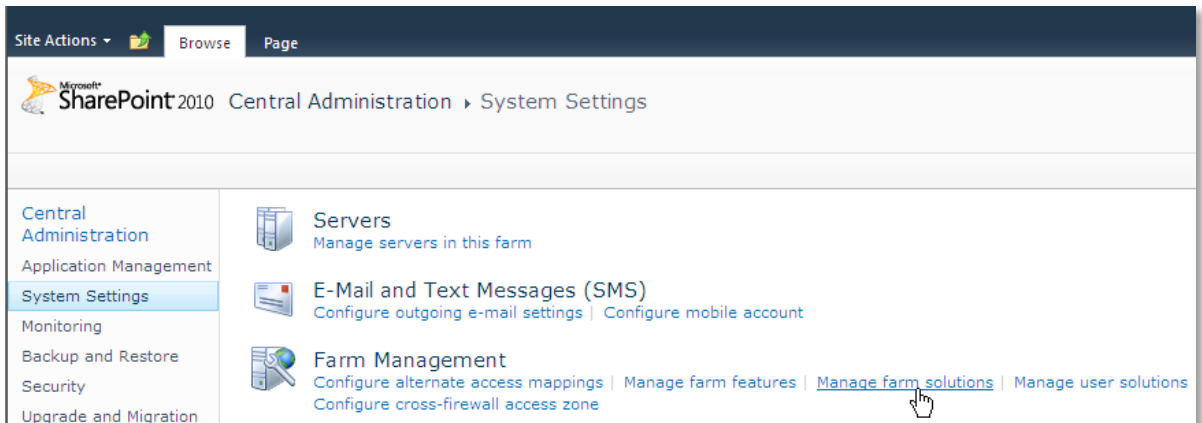
```
<SafeControl Assembly="AEYoutubewebpart, Version=1.0.0.0, Culture=neutral, PublicKeyToken=0f05783648b65adc" Namespace="AEYoutubewebpart" TypeName="*" Safe="True" />
```

4. from the top site go to "Site Actions/Site Settings/Modify All Site Settings/Galleries/Web Parts"
5. use the "Upload" menu option to upload the AEYoutube.webpart file.

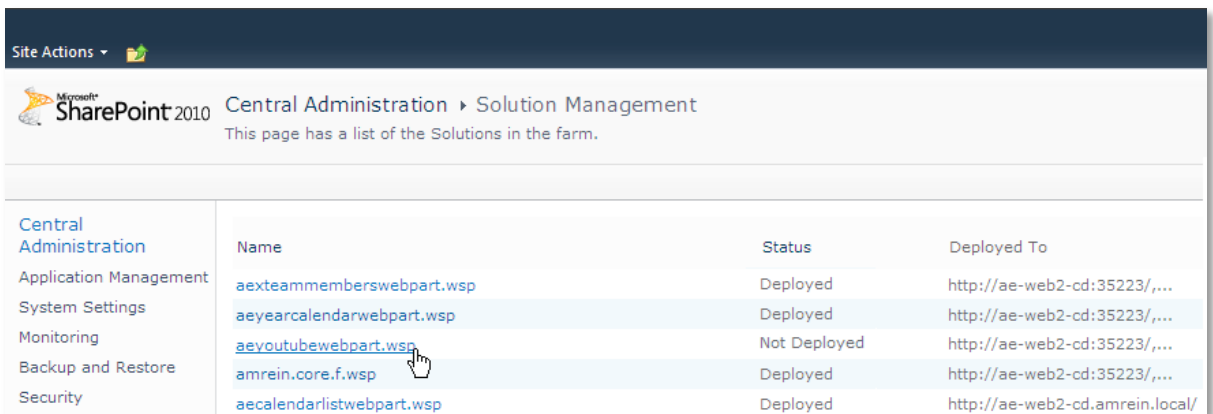
Automatic Installation

1. Unpack the **AEYoutubeWebpart.wsp** and **Install.bat** files from the Zip Archive and place the 2 files onto your Sharepoint Server.
2. Add the Solution by either running **Install.bat** (SP2007), **Install2010.bat** (SP2010), **Install2013.bat** (SP2013) or manually entering:
`stsadm -o addsolution -filename AEYoutubewebpart.wsp`

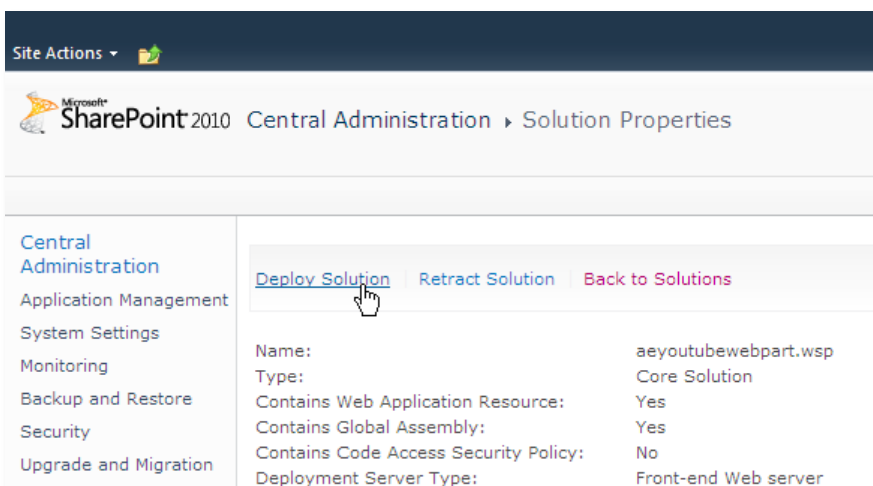
3. Deploy the solution by navigating with your browser to “Central Administration/System Settings/Manage farm solutions”:



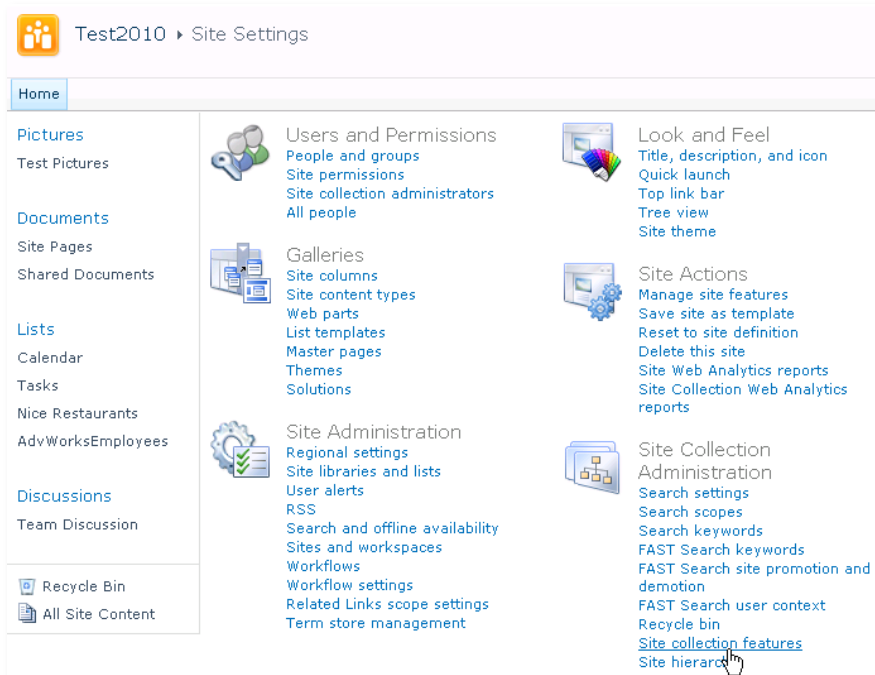
4. You should now see the **AEYoutubeWebpart.wsp** in the farm’s solution store:



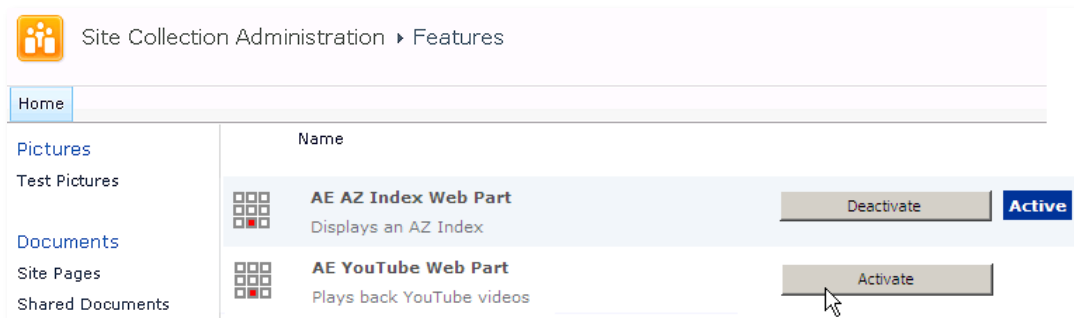
Click on “aeyoutubewebpart.wsp” to deploy the solution:



5. Proceed to activate the feature by navigating to the "Site Actions/Site Settings" page in your top-level site:



Choose "Site collection features" to navigate to the Site Collection Features page:

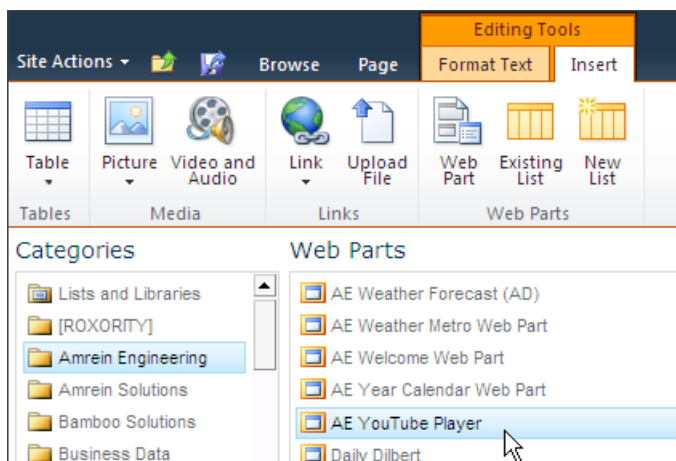


Activate the "AE YouTube Web Part" feature

Adding the Web Part to a Page

Navigate to a page where you would like to place the web part and choose "Site Actions/Edit Page"

1. Add the web part to the appropriate zone. The web part is listed in the "Amrein Engineering" gallery section :



2. Configure the following Web Part properties in the Web Part Editor "Miscellaneous" pane section as needed:

Miscellaneous

Site Name

List Name
YouTube Videos

View Name

Video Embed URL (optional)

Player width (px)
420

Player height (px)
240

Show Title

Show Description

Show Playlist

Playlist Template

Nbr. of Videos displayed
1

Show Random Entry

Show Video Thumbnails

Thumbnail Image Width (px)
96

Autoplay

Loop Video

Center YouTube Player

Video Popup Link
={title}

License Key

- **Site Name:** Enter the name of the site that contains the Youtube Player Sharepoint List:
 - leave this field empty if the Library is in the current site (eg. the Web Part is placed in the same site)
 - Enter a "/" character if the Library is contained in the top site
 - Enter a path if the Library is in a subsite of the current site (eg. in the form of "current site/subsite")
- **List Name:** Enter the desired Sharepoint List.
This defines the Sharepoint List that contains the Youtube URL's of the videos.
- **View Name:** Optionally enter the desired List View of the list specified above.
A List View allows you to specify specific data filtering and sorting.
Leave this field empty if you want to use the List default view.
- **Video Embed URL:**
 - **Random Movie Rotator:** if this field is left empty, a video from the specified Sharepoint List will be randomly selected every time the page is accessed.
 - **Static Display:** If you rather want to statically display a specific video from the specified Sharepoint List, enter the Youtube embed URL:
Example: <http://youtu.be/cz6LbWWqX-g>

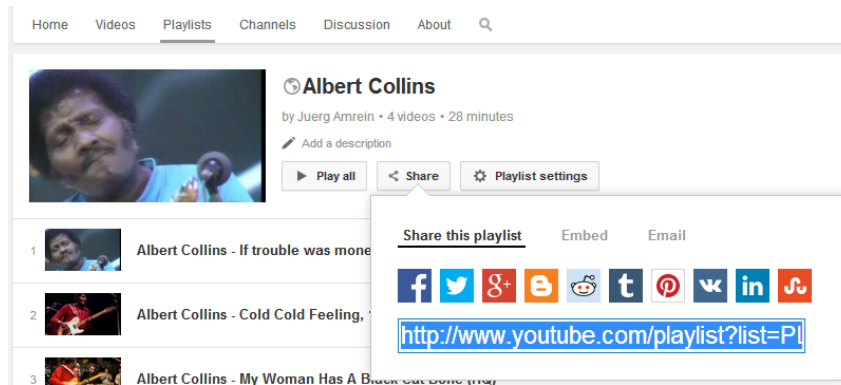
If you paste a YouTube URL (explained below) into this field, the corresponding YouTube video will be played. You can find the YouTube URL of the video in the box below the “Share this video” link of the YouTube page on **www.youtube.com** of the video to be displayed:



- **Youtube Playlist:** If you want to display a specific Youtube playlist, enter the Youtube playlist embed URL.

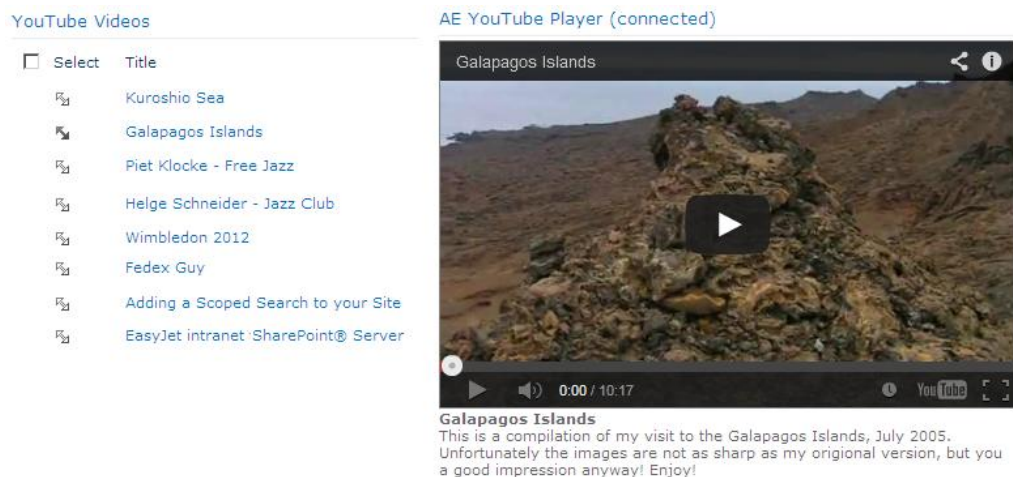
Example: http://www.youtube.com/playlist?list=PL_V0MXJ4v70IOkuXIYW5oPoOEzUXokOul

You can find the YouTube playlist URL in the box below the “Share” link of the YouTube playlist page (by clicking on the “Playlists” tab) on **www.youtube.com**:



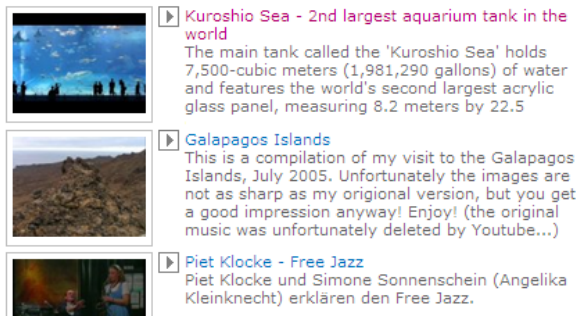
- Create a **Web Part Connection** between the Sharepoint List and the Youtube Web Part as follows:

- switch the page to "Edit" mode
- Choose "**Connections**" from the List Web Part "edit" menu
- Choose "**Provide Row To**"
- Select the Youtube Player Web Part in the menu



If you connect to a Sharepoint List, you need to put the Youtube video URL's into a List column named "**URL**". You might also want to add a "**Description**" List column to store the media file descriptions.

- **Player Width:**
enter the desired width of the Youtube Player in pixels (YouTube standard width is 425 pixels)
- **Player Height:**
enter the desired height of the Youtube Player in pixels (YouTube standard height is 344 pixels)
- **Show Title:**
this optional setting displays the media file **Title** in the Web Part header as defined in the Sharepoint List's "Title" field.
- **Show Description:**
this optional setting displays the media file **Description** in the Web Part body. These values are retrieved from the Sharepoint list entry (if present).
- **Show Playlist:** lists all the videos contained in the specified Sharepoint List as a playlist for manual video playback selection.
If the Sharepoint List contains a "**Title**" column, the playlist will show the values taken from this column. Also, if the Sharepoint List contains a "**Description**" column, these values will be shown in the playlist.



- **Nbr. of Videos displayed:** enter the maximum number of videos to be displayed in the playlist.
- **Show Random Entry:** select a random video from the playlist
- **Show Video Thumbnails:** show or hide the Youtube video thumbnail images to be displayed in the playlist.
- **Thumbnail Image Width:** define the width of the thumbnail images in pixels.
- **Autoplay:** check this field if you want to start the video automatically without user intervention.
- **Loop Video:** enable or disable automatic looping of the video
- **Center YouTube Player:** horizontally center the player in web part zone.
- **License Key:**
enter your Product License Key (as supplied after purchase of the web part license).
Leave this field empty if you are using the 30 day evaluation version or if you choose one of the License Activation described below.

License Activation

You have the following 3 options to enter your License Key:

1. Enter the License Key into the corresponding "License Key" field in the web part configuration pane (see above).

2. WSP Solution Deployment:

Add the **License.txt** file (as supplied by AMREIN ENGINEERING after having purchased a license) to the Solution at the following location:

WSS3.0 and MOSS2007:

`c:\Program Files\Common Files\Microsoft Shared\Web Server Extensions\12\template\features\AEYoutubeWebpart`

SP 2010:

`c:\Program Files\Common Files\Microsoft Shared\Web Server Extensions\14\template\features\AEYoutubeWebpart`

SP 2013:

`c:\Program Files\Common Files\Microsoft Shared\Web Server Extensions\15\template\features\AEYoutubeWebpart`

3. Manual Deployment:

Add the License Key to your web.config (typically found at `c:\inetpub\wwwroot\wss\virtualdirectories\80`) <appSettings> section as follows:

```
<appSettings>
  <add key="AEYT" value="AEYT-x-xxxxx-xxxxx-xx-xx" />
</appSettings>
```

Replace the "x" characters with your actual key values.

Please note that this method requires you to manually add the key to each Sharepoint application.