

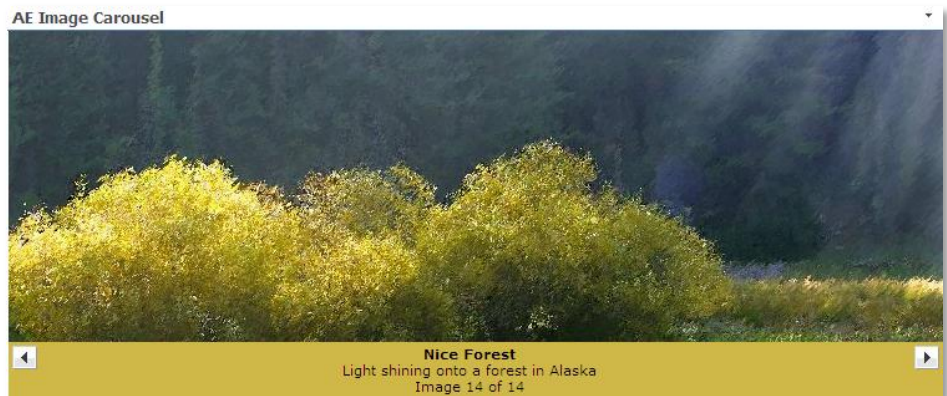
---

# Image Carousel Web Part

© AMREIN ENGINEERING AG

Version 1.0

January 2011



---

## Description

The Picture Carousel Web Part sequentially displays the images contained in the specified Sharepoint Picture Library. Clicking an image opens a full size "Lightbox" view.

The Web Part can be used with Windows Sharepoint Services V3, MOSS.2007 and Sharepoint 2010

The following parameters can be configured:

- Sharepoint Picture Library containing the pictures
- Frame change rate
- Maximum image dimensions
- Automatic sequential play-back
- Library View to be able to select/filter a subset of images in a library
- optional Image Caption (taken from Picture Library "Title" and "Description" fields)

## Prerequisites

Before you attempt to install the solutions you need to make sure that you have the following installed on your server(s):

- Microsoft Office SharePoint Server 2007, WSS 3.0 or Sharepoint 2010

## Installation

### Manual Installation

1. download and unpack the **AECarouselWebpart.zip** file.  
The ZIP archive contains the CarouselWebpart.dll and the AECarousel.webpart files.
2. drop the **AECarouselWebpart.dll** either into the SPS web application bin directory or into the GAC of your Sharepoint server (c:\windows\assembly).
3. add the following line to the "<SafeControls>" section of your Web.Config file.  
Please make sure that the line is added as one single line (no line breaks):

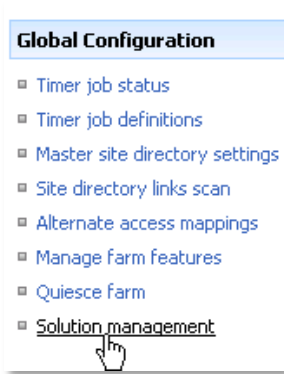
```
<SafeControl Assembly="AECarouselWebpart, Version=1.0.0.0, Culture=neutral,
PublicKeyToken=393679df925d2a00" Namespace="AECarouselWebpart" TypeName="*" Safe="True" />
```

4. from the top site go to "Site Actions/Site Settings/Modify All Site Settings/Galleries/Web Parts"
5. use the "Upload" menu option to upload the AECarousel.webpart file.

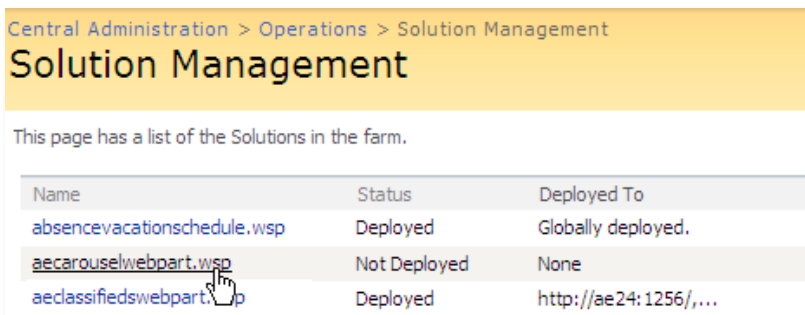
### Automatic Installation

1. Unpack the **AECarouselWebpart.wsp** and **Install.bat** files from the Zip Archive and place the 2 files onto your Sharepoint Server.
2. Add the Solution by either running **Install.bat** or manually entering:  
stsadm -o addsolution -filename AECarouselWebpart.wsp

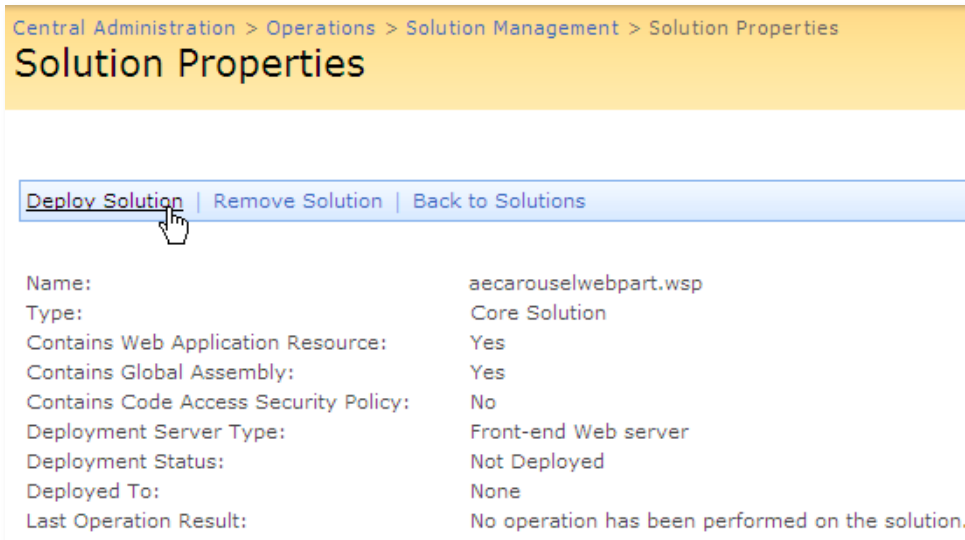
3. Deploy the solution by navigating with your browser to “Central Administration->Operations->Solution Management”:



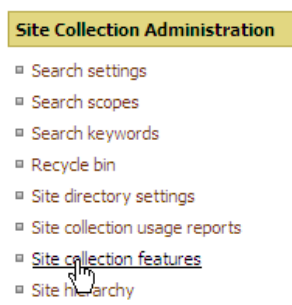
4. You should now see the **AECarouselWebpart.wsp** in the farm’s solution store:



Click on “AECarouselWebpart.wsp” to deploy the solution:



5. Proceed to activate the feature by navigating to the “Site Actions/Site Settings” page in your top-level site:



Choose "Site collection features" to navigate to the Site Collection Features page:

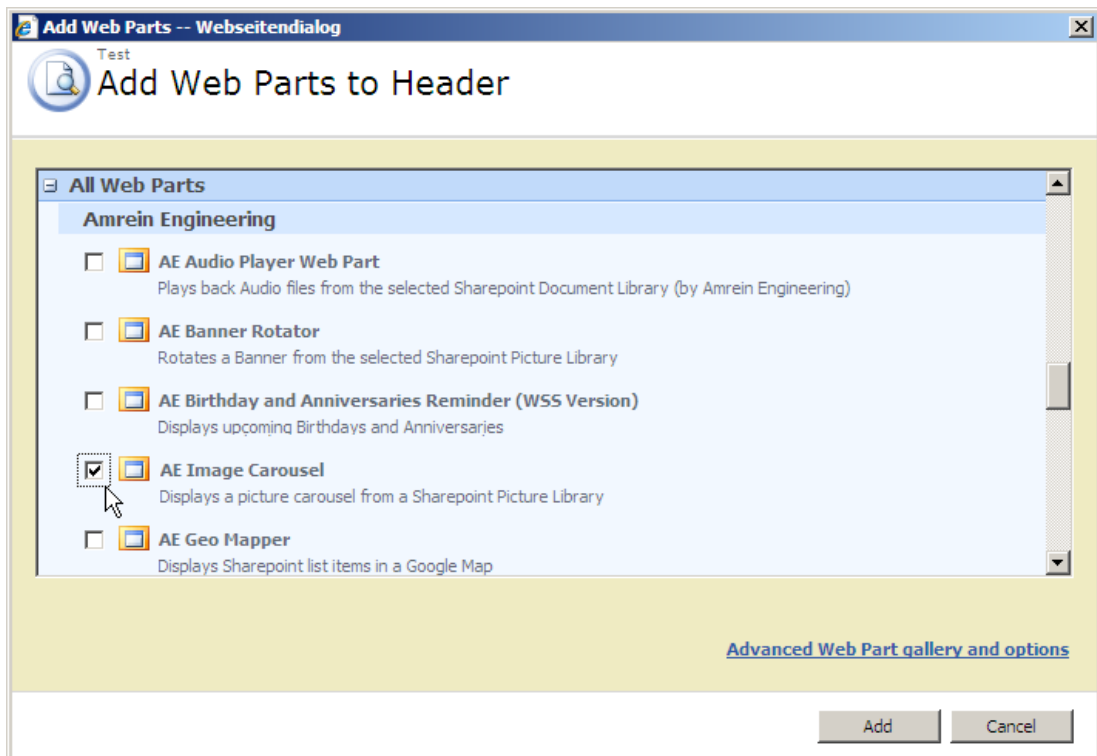


Activate the "AE Carousel Web Part" feature

## Adding the Web Part to a Page

Navigate to a page where you would like to place the web part and choose "Site Actions/Edit Page"

1. Add the web part to the appropriate zone. The web part is listed in the "Amrein Engineering" gallery section :



## Web Part Configuration

Configure the following Web Part properties in the Web Part Editor "Miscellaneous" pane section as needed:

The screenshot shows the configuration interface for the 'AE Image Carousel' web part. The 'Miscellaneous' section is expanded, revealing several input fields and checkboxes. The 'List Name' field is populated with 'Banners'. The 'Thumbnail width (px)' field is set to 750, and the 'Thumbnail height (px)' field is set to 250. The 'Carousel Style' field contains the CSS rule 'background-color:black'. The 'Caption Style' field contains 'font:8pt verdana;color:black;'. Several options are checked, including 'Show Thumbnail Title', 'Show Thumbnail Description', 'Show Picture Number', and 'Center Banner'. The 'Slideshow speed (ms)' is set to 4000, and the 'Carousel Transition Effect' is set to 'WipeLeft'.

- **Site Name:**
  - Enter the name of the site that contains the Carousel Picture Library:
  - leave this field empty if the Library is in the current site (eg. the Web Part is placed in the same site)
  - Enter a "/" character if the Library is contained in the top site
  - Enter a path if the Library is in a subsite of the current site (eg. in the form of "current site/subsite")
  
- **List Name:**
  - Enter the desired Sharepoint Picture Library name.
  - If you want to display only the images contained in a specific Library folder, append the folder name (separated by a "/") to the Library name:
  
  - Example: **Site Pictures/Barbeque**
  - Please note that Library folders are supported only in the licensed version.
  
  - If an "URL" list column is found in the specified Sharepoint Library, it will be used as a hyperlink for the corresponding picture. The link then opens in a new browser window
  
- **View Name:**
  - Optionally enter the desired List View of the list specified above. A List View allows you to specify specific data filtering

---

and sorting. Please note that you need to select both the "Picture Width" and "Picture Height" columns when defining the view. These values are needed to properly scale the images.  
Leave this field empty if you want to use the List default view.

- **Thumbnail Width:**  
enter the desired maximum width of the images in pixels (the images will be automatically scaled if they are wider than this value)
- **Thumbnail Height:**  
enter the desired maximum height of the images in pixels (the images will be automatically scaled if they are taller than this value)
- **Carousel Style:**  
enter the desired CSS style for the Carousel image area:  
Example: `background-color:black`
- **Caption Style:**  
enter the desired CSS style for the Carousel caption area:  
Example: `font:8pt verdana;color:black;background-color:#CFB848;padding:3px;vertical-align:top`
- **Show Thumbnail Title:**  
show or hide the picture "Title" field in the caption area
- **Show Thumbnail Description:**  
show or hide the picture "Description" field in the caption area
- **Show Picture Number:**  
show or hide the current picture number ("Picture x of nn) in the caption area
- **Use Preview Images:**  
displays the scaled-down Sharepoint "Preview" images (instead of the original images) to reduce the memory load (recommended if the Library contains big images that are considerably larger than 640x640 pixels).
- **Center Carousel:**  
center the web part in the available horizontal space
- **Slideshow Speed:**  
enter the frame change time in milliseconds. Enter the value "0" to disable the automatic slideshow feature.
- **Carousel Transition Effect:**  
choose the desired picture transition effect
- **License Key:**  
enter your Product License Key (as supplied after purchase of the "Carousel Web Part" license key). Leave this field empty if you are using the free 30 day evaluation version or if you choose one of the License Activation described below.

---

## License Activation

You have the following 3 options to enter your License Key:

1. Enter the License Key into the corresponding "License Key" field in the web part configuration pane (See description above).

**2. WSP Solution Deployment:**

Add the **License.txt** file (as supplied by AMREIN ENGINEERING after having purchased a license) to the Solution at the following location:

```
c:\Program Files\Common Files\Microsoft Shared\Web Server Extensions\12\template\features\AECarouselWebpart
```

**3. Manual Deployment:**

Add the License Key to your web.config (typically found at c:\inetpub\wwwroot\wss\virtualdirectories\80) <appSettings> section as follows:

```
<appSettings>  
  <add key="AEIC" value="AEIC-x-xxxxx-xxxxx-xx-xx" />  
</appSettings>
```

Replace the "x" characters with your actual key values.

Please note that this method requires you to manually add the key to each Sharepoint application.