
List Rotator Web Part

© AMREIN ENGINEERING AG

Version 1.0

May 2017

Microsoft Ignite Conference 2017

5/3/2017 11:28 AM

The conference will take place in Orlando FL on Sept. 25–29 2017. A conference that includes more than 23,000 attendees need big venues to accommodate the...



[→ \(read more..\)](#)



Description

The List Rotator Web Part sequentially displays the List items contained in the specified Sharepoint List. The Web Part can be used with Windows Sharepoint Services V3, MOSS.2007, Sharepoint 2010, Sharepoint 2013 and Sharepoint 2016.

The following parameters can be configured:

- Sharepoint List to be rotated
- Frame change rate
- Automatic sequential play-back
- List View to be able to select/filter a subset of items in a List

Prerequisites

Before you attempt to install the solutions you need to make sure that you have the following installed on your server(s):

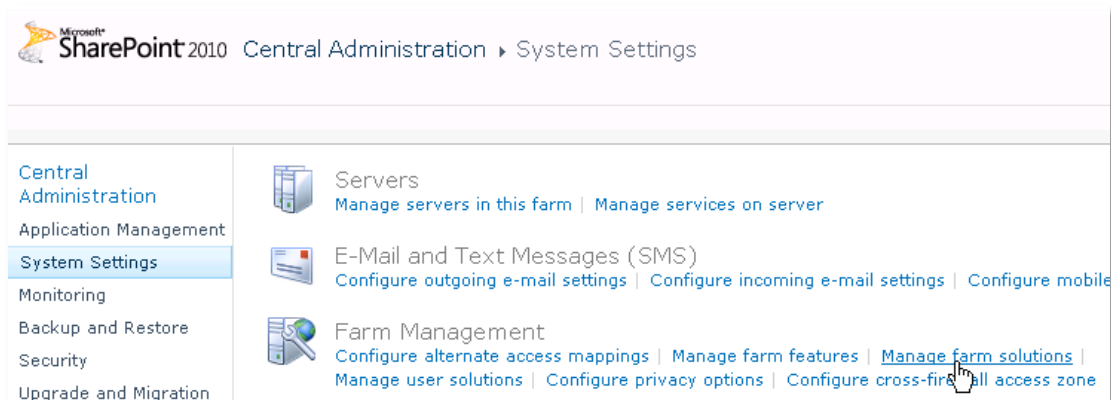
- Microsoft Office SharePoint Server 2007, WSS 3.0, Sharepoint 2010, 2013 or 2016.

Installation

1. download and unpack the AEListRotatorWebpart.zip file.
2. Unpack the **AEListRotatorWebpart.wsp** and **Install.bat** files from the Zip Archive and place the 2 files onto your Sharepoint Server.
3. Add the Solution by either running **Install.bat** (for Sharepoint 2007), **install2010.bat** (for Sharepoint 2010), **install2013.bat** (for Sharepoint 2013) or **install2016.bat** (for Sharepoint 2016) by manually entering:

```
stsadm -o addsolution -filename AEListRotatorWebpart.wsp
```

4. Deploy the solution by navigating with your browser to "Central Administration > System Settings > Farm Management > Manage farm solutions":



5. You should now see the **AEListRotatorWebpart.wsp** in the farm's solution store:

Name	Status	Deployed To
aegooglemapwebpart.wsp	Not Deployed	None
aestaffdirectorywebpart.wsp	Deployed	http://bto-web1-cd/
aesurveywebpart.wsp	Deployed	http://bto-web1-cd/
aelistrotatorwebpart.wsp	Not Deployed	None

Click on "**AEListRotatorWebpart.wsp**" to deploy the solution:

Property	Value
Name:	aelistrotatorwebpart.wsp
Type:	Core Solution
Contains Web Application Resource:	Yes
Contains Global Assembly:	Yes
Contains Code Access Security Policy:	No
Deployment Server Type:	Front-end Web server
Deployment Status:	Not Deployed
Deployed To:	None

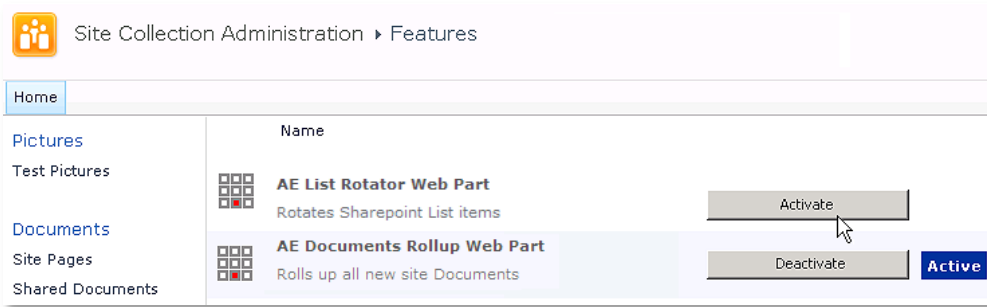
6. Proceed to activate the feature by navigating to the "**Site Actions/Site Settings**" page in your top-level site:

Test2010 > Site Settings

Home

- Users and Permissions**
 - People and groups
 - Site permissions
 - Site collection administrators
 - All people
- Galleries**
 - Site columns
 - Site content types
 - Web parts
 - List templates
 - Master pages
 - Themes
 - Solutions
- Site Administration**
 - Regional settings
 - Site libraries and lists
 - User alerts
 - RSS
 - Search and offline availability
 - Sites and workspaces
 - Workflows
 - Workflow settings
 - Related Links scope settings
 - Term store management
- Look and Feel**
 - Title, description, and icon
 - Quick launch
 - Top link bar
 - Tree view
 - Site theme
- Site Actions**
 - Manage site features
 - Save site as template
 - Reset to site definition
 - Delete this site
 - Site Web Analytics reports
 - Site Collection Web Analytics reports
- Site Collection Administration**
 - Search settings
 - Search scopes
 - Search keywords
 - FAST Search keywords
 - FAST Search site promotion and demotion
 - FAST Search user context
 - Recycle bin
 - [Site collection features](#)
 - Site hierarchy

Choose "Site collection features" to navigate to the Site Collection Features page:

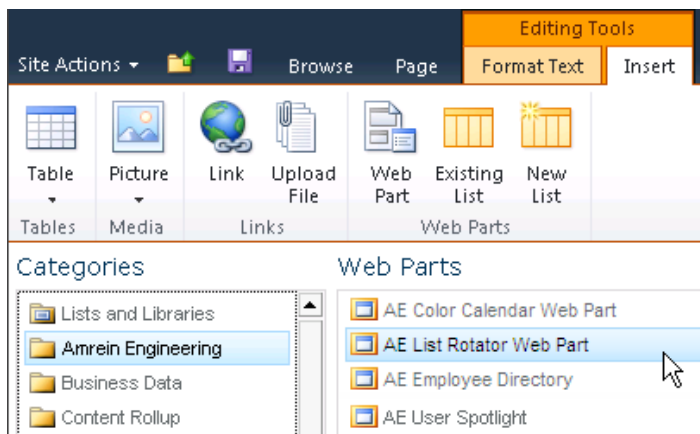


Activate the "AE List Rotator Web Part" feature

Adding the Web Part to a Page

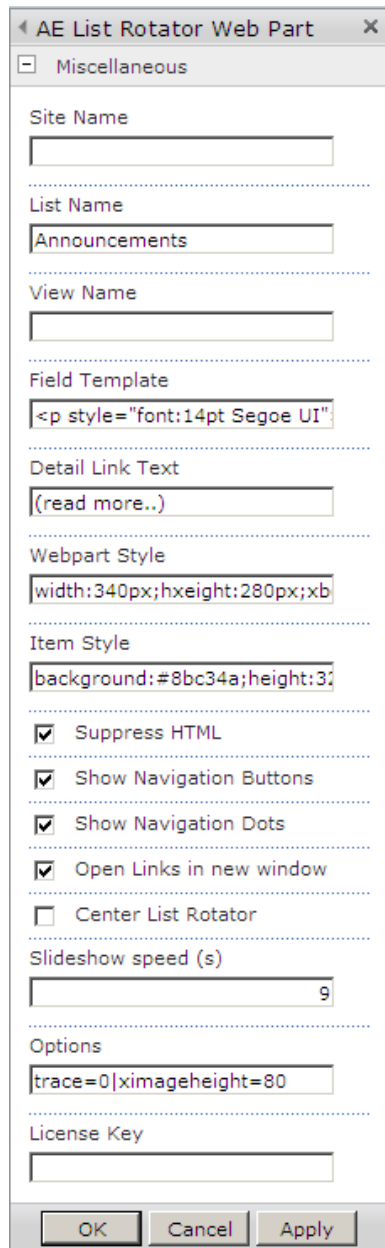
Navigate to a page where you would like to place the web part and choose "Site Actions/Edit Page"

1. Add the web part to the appropriate zone. The web part is listed in the "Amrein Engineering" gallery section :



Web Part Configuration

Configure the following Web Part properties in the Web Part Editor "**Miscellaneous**" pane section as needed:



The screenshot shows the configuration dialog for the 'AE List Rotator Web Part' in the 'Miscellaneous' pane. The fields are as follows:

- Site Name: [Empty]
- List Name: Announcements
- View Name: [Empty]
- Field Template: `<p style="font:14pt Segoe UI">`
- Detail Link Text: (read more..)
- Webpart Style: `width:340px;hxeight:280px;xb`
- Item Style: `background:#8bc34a;height:32`
- Suppress HTML:
- Show Navigation Buttons:
- Show Navigation Dots:
- Open Links in new window:
- Center List Rotator:
- Slideshow speed (s): 9
- Options: `trace=0|ximageheight=80`
- License Key: [Empty]

Buttons: OK, Cancel, Apply

- **Site Name:** enter the name of the site that contains the Sharepoint List:
 - leave this field empty if the List is in the current site (eg. the Web Part is placed in the same site)
 - enter a "/" character if the List is contained in the top site
 - enter a path if the List in in a subsite of the current site (eg. in the form of "current site/subsite")
- **List Name:** enter the desired Sharepoint List or Library name.
- **View Name:** optionally enter the desired List View of the list specified above. A List View allows you to specify specific data filtering and sorting. Leave this field empty if you want to use the List default view.
- **Field Template:** enter the List columns to be displayed (surrounded by curly braces). You can embed HTML tags and CSS styles to freely format the text.
Example: `<p style="font:14pt Segoe UI">>{Title}</p>
{Modified}
{Body/more:25}

{Attachments}`

- **Detail Link Text:** allows to localize the "Details.." link displayed in the lower right part of the web part (if a "Details" link is specified).
- **Webpart Style:** enter the desired CSS style for the List Rotator web part:
Example: `width:340px; background:#f0f0f0`
- **Item Style:** enter the desired CSS style for the Text area:
Example: `background:green;height:320px;padding:7px;color:white;font:10pt Segoe UI`
- **Suppress HTML:** optionally suppress the HTML tags contained in the text area
- **Show Navigation Buttons:** show or hide the "left" and "right" navigation buttons.
- **Show Navigation Dots:** show or hide the bullets (to select an individual item) in the caption area
- **Open Links in new window:** opens the feed items in a new browser window/Sharepoint dialog popup window.
- **Center List Rotator:** center the web part in the available horizontal space
- **Slideshow Speed:** enter the frame change time in seconds. Enter the value "0" to disable the automatic slideshow feature.
- **License Key:** enter your Product License Key (as supplied after purchase of the "List Rotator Web Part" license key). Leave this field empty if you are using the free 30 day evaluation version or if you choose one of the License Activation described below.

License Activation

You have the following 3 options to enter your License Key:

1. Enter the License Key into the corresponding "License Key" field in the web part configuration pane (See description above).

2. WSP Solution Deployment:

Add the **License.txt** file (as supplied by AMREIN ENGINEERING after having purchased a license) to the Solution at the following location:

Sharepoint 2010:

```
c:\Program Files\Common Files\Microsoft Shared\Web Server
Extensions\14\template\features\AEListRotatorWebpart
```

Sharepoint 2013:

```
c:\Program Files\Common Files\Microsoft Shared\Web Server
Extensions\15\template\features\AEListRotatorWebpart
```

Sharepoint 2016:

```
c:\Program Files\Common Files\Microsoft Shared\Web Server
Extensions\16\template\features\AEListRotatorWebpart
```

3. Manual Deployment:

Add the License Key to your web.config (typically found at c:\inetpub\wwwroot\wss\virtualdirectories\80) <appSettings> section as follows:

```
<appSettings>
  .
  .
  <add key="AELR" value="AELR-x-xxxxx-xxxxx-xx-xx" />
</appSettings>
```

Replace the "x" characters with your actual key values.

Please note that this method requires you to manually add the key to each Sharepoint application.