

Timeline

Web Part




Sharepoint 2010 Installation Instructions

© AMREIN ENGINEERING AG

Version 1.0

April 2014

Week of Monday, April 14, 2014							
Name	Mon, 14 Apr	Tue, 15 Apr	Wed, 16 Apr	Thu, 17 Apr	Fri, 18 Apr	Sat, 19 Apr	Sun, 20 Apr
Alex Huber		pending					
Cathrine Hunziker							
Ester Amrein		rejected					
Jürg Amrein		accepted					
Mehmet Erkan			pending	pending			

← →    [Add new item](#) ■ pending ■ accepted ■ rejected

Description

The AE Timeline Web Part displays the appointments of the selected Sharepoint calendar as a Timeline. The appointments can be grouped by a Calendar column which displays each group as a separate row. This allows to easily visualize the appointments as for example room bookings etc.

A "Category" column can be specified to color code the appointments in the timeline display.

The Web Part can be used with Windows Sharepoint 2007, 2010 and 2013.

Prerequisites

Before you attempt to install the solutions you need to make sure that you have the following installed on your server(s):

- Microsoft SharePoint 2010, 2013, MOSS 2007 or WSS 3.0

Installation

Manual Installation

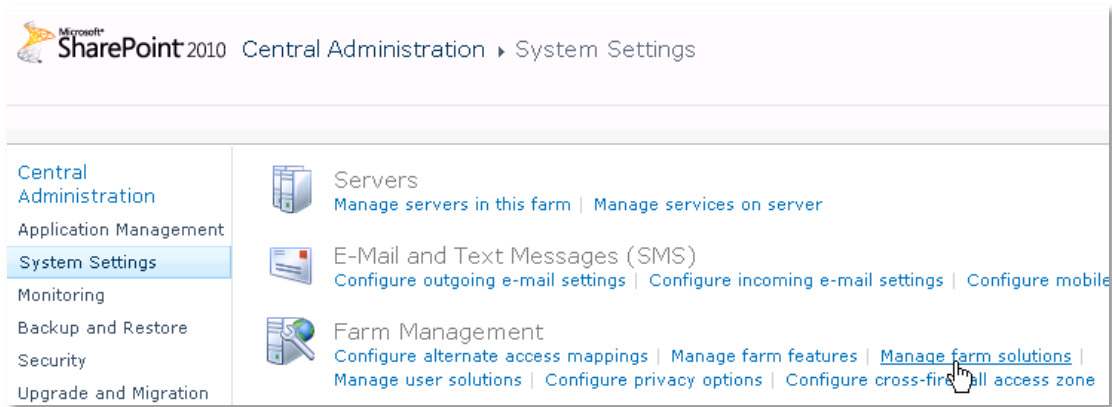
1. download and unpack the **AETimelineWebpart.zip** file.
The ZIP archive contains the AETimelineWebpart.dll and the AETimeline.webpart files.
2. drop the DLL file either into the SPS web application BIN directory or into the GAC of your Sharepoint server (c:\windows\assembly).
3. add the following line to the "<SafeControls>" section of your Web.Config file.
Please make sure that the line is added as one single line (no line breaks):

```
<SafeControl Assembly="AETimelineWebpart, Version=1.0.0.0, Culture=neutral, PublicKeyToken=8a09fba372e00af3" Namespace="AETimelineWebpart" TypeName="*" Safe="True" />
```

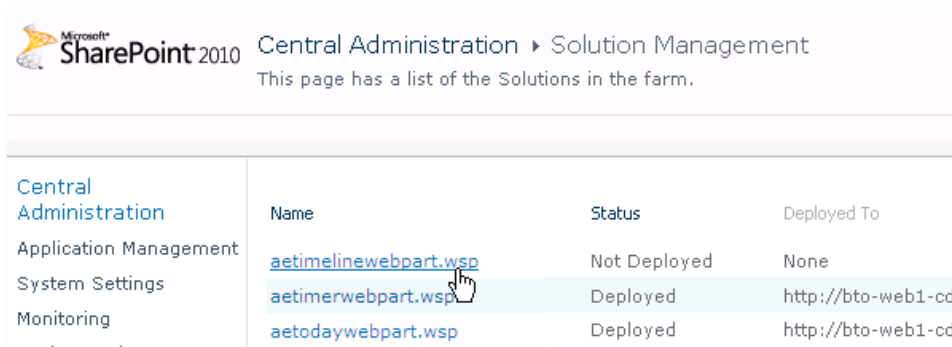
4. from your Sharepoint Application's top site go to "Site Actions/Site Settings/Modify All Site Settings/Galleries/Web Parts"
5. use the "Upload" menu option to upload the AETimeline.webpart file.

Automatic Installation

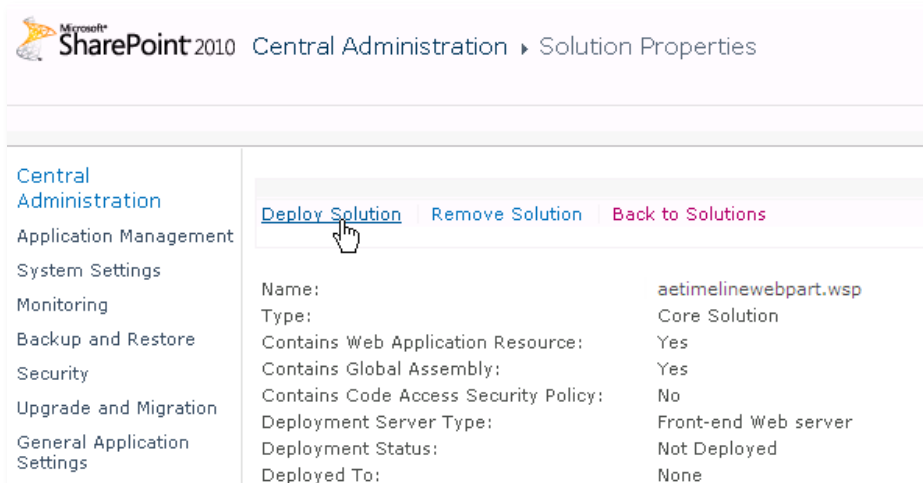
1. Unpack the **AETimelineWebpart.wsp** and **Install.bat** files from the Zip Archive and place the 2 files onto your Sharepoint Server.
2. Add the Solution by either running **Install.bat** (use **install2010.bat** for SP 2010 or **install2013.bat** for SP 2013) or manually entering:
`stsadm -o addsolution -filename AETimelineWebpart.wsp`
3. Deploy the solution by navigating with your browser to "Central Administration > System Settings > Farm Management > Manage farm solutions":



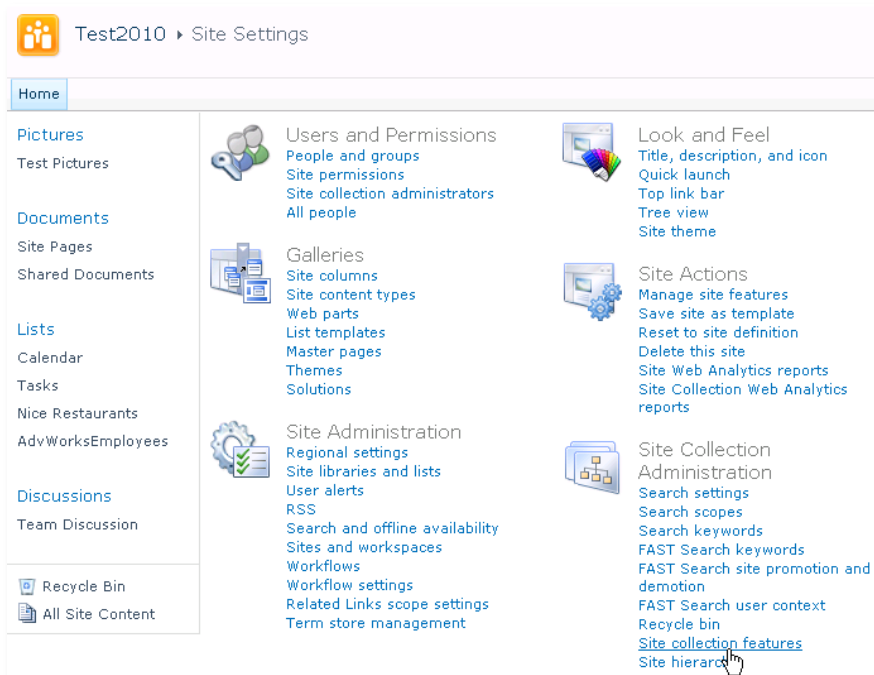
4. You should now see the **AETimelineWebpart.wsp** in the farm's solution store:



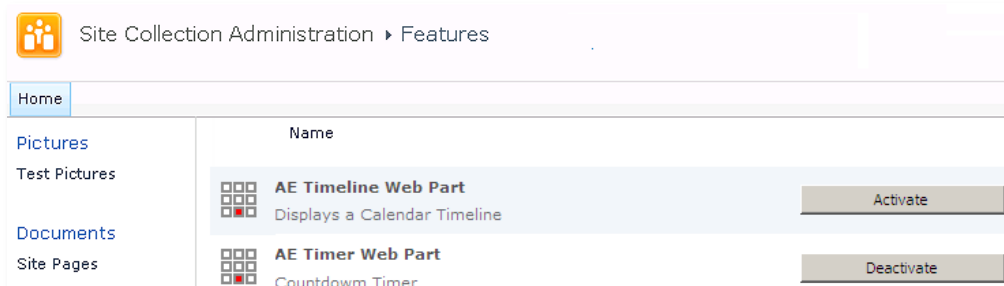
Click on "**AETimelineWebpart.wsp**" to deploy the solution:



5. Proceed to activate the feature by navigating to the "Site Actions/Site Settings" page in your top-level site:



Choose "Site collection features" to navigate to the Site Collection Features page:

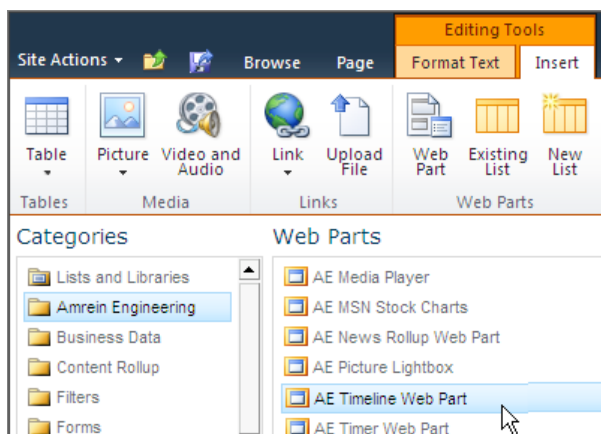


Activate the "AE Timeline Web Part" feature

Adding the Web Part to a Page

Navigate to a page where you would like to place the web part and choose "Site Actions/Edit Page"

- Add the web part to the appropriate zone. The web part is listed in the "Amrein Engineering" gallery section :



Web Part Configuration

Configure the following Web Part properties in the Web Part Editor "Miscellaneous" pane section as needed:

- **Site Name:**
enter the name of the site that contains the Banner Picture Library:
- leave this field empty if the Library is in the current site (eg. the Web Part is placed in the same site)
- enter a "/" character if the Library is contained in the top site
- enter a path if the Library in in a subsite of the current site (eg. in the form of "current site/subsite")**User Password:** enter the password of the above user account

- **Calendar Name:**
Enter the name of the Sharepoint Calendar to be displayed.

- **View Name:**
Optionally enter the desired List View of the Calendar specified above. A List View allows you to specify specific data filtering and sorting.
Leave this field empty if you want to use the Calendar's default view.

- **Group By:**
enter the name of the column to be used to group the results (each group will be displayed on a separate row).

Examples:

Room
Applicant

- **Category Column:**
optionally enter the name of the column to be used for color coding the events.

- **Category Colors:**
You can individually color the calendar entries for each category by specifying the desired color (prefixed by an 'equal' sign) for each Calendar category.

- **Property Filter:**
enter an optional Filter condition to filter the events.
Combine multiple conditions with **AND** and **OR**.

Examples:

```
Department='IT'  
Department<> 'Sales'  
Department IN ('Sales', 'Development', 'IT')  
LastName NOT IS NULL AND Department='Sales'  
[Start Time] < {today}  
[End Time] > {today-7}
```

You can pass Querystring parameters in the page URL to the Filter by embedding the Querystring name(s) in curly braces:

Example:

```
Department='{Dept}'
```

(produces Department='IT' if the URL contains ..yourpage.aspx?Dept=IT)

- **Default View:**
Enter the desired default view (Day, Week or Month)
- **Day Start Hour:**
Enter the desired start hour of the workday as a value between 0 and 23 (military format).
Example: 8

The screenshot shows the 'Miscellaneous' configuration pane for a calendar web part. The fields are as follows:

- Site Name:** Empty text box.
- Calendar Name:** Text box containing 'VacationRequest'.
- View Name:** Text box containing 'Current Events'.
- Group By:** Text box containing 'Applicant'.
- Category Column:** Text box containing 'Status'.
- Category Colors:** Text box containing 'pending=orange;accepted=gre'.
- Property Filter:** Empty text box.
- Default View:** Dropdown menu set to 'Month'.
- Day Start Hour:** Text box containing '7'.
- Day End Hour:** Text box containing '18'.
- Use AM/PM time format:** Checked checkbox.
- Hide Weekends:** Unchecked checkbox.
- Alternating Row Colors:** Unchecked checkbox.
- Show Day View Hour Ruler:** Unchecked checkbox.
- Show Category Legend:** Checked checkbox.
- Show 'Add New Item' Button:** Checked checkbox.
- Footer:** Empty text box.
- Localization:** Empty text box.
- Page Refresh Interval:** Text box containing '0'.
- Cache Retention Time:** Text box containing '0'.
- Options:** Empty text box.
- License Key:** Empty text box.

-
- **Day End Hour:**
Enter the desired end hour of the workday as a value between 0 and 23 (military format).
Example: **17**
 - **Use AM/PM time format:**
either display the time in AM/PM or military format.
 - **Hide Weekends:** display or hide the weekends in the calendar
 - **Alternating Row Color:** enter the optional color of the alternating row background (leave blank to use default).
Enter either the HTML color names (as eg. "red" etc.) or use hexadecimal RRGGBB coding (as eg. "#CCFFCC").
 - **Show Day View Hour Ruler:**
either turn on or off the hour ruler in the week view display.
 - **Show Category Legend:**
either display or hide the Category colors legend at the bottom of the calendar.
 - **Show 'Add New Item' Button:**
either display or hide the 'Add new calendar item' link at the bottom. Please note that the link is only visible for users with the corresponding calendar "Author" rights.
 - **Footer:**
optionally display a footer text in the bottom area. You can use HTML tags to format the text.
 - **Localization:**
optionally enter the following 7 values (separated by semicolons) in your local language if you want to override the English strings corresponding to the
Name (Name column header)
Week of
all day
Add new item

Example (German):
Raum;Woche vom;ganzer Tag;neuer Eintrag
 - **Page Refresh Interval:**
enter the optional page refresh interval in minutes (0 = no page refresh)
 - **Cache Retention Time:**
Enter the data cache retention time in Minutes (enter "0" to disable data caching)
 - **License Key:** enter your Product License Key (as supplied after purchase of the "Timeline Web Part" license key). Leave this field empty if you are using the free 30 day evaluation version or if you choose one of the License Activation described below.

License Activation

You have the following 3 options to enter your License Key:

1. Enter the License Key into the corresponding "License Key" field in the web part configuration pane (see Description above).

2. WSP Solution Deployment:

Add the **License.txt** file (as supplied by AMREIN ENGINEERING after having purchased a license) to the Solution at the following location:

Sharepoint 2010:

`c:\Program Files\Common Files\Microsoft Shared\Web Server Extensions\14\template\features\AETimelineWebpart`

Sharepoint 2013:

`c:\Program Files\Common Files\Microsoft Shared\Web Server Extensions\15\template\features\AETimelineWebpart`

3. Manual Deployment:

Add the License Key to your web.config (typically found at `c:\inetpub\wwwroot\wss\virtualdirectories\80`) **<appSettings>** section as follows:

```
<appSettings>
  .
  .
  <add key="AETL" value="AETL-x-xxxxx-xxxxx-xx-xx" />
</appSettings>
```

Replace the "x" characters with your actual key values.

Please note that this method requires you to manually add the key to each Sharepoint application.