
Welcome Web Part

© AMREIN ENGINEERING AG

Version 1.0

March 2013

Welcome Web Part



Good afternoon Alex

Tuesday, April 02, 2013

Description

The "Welcome" Web Part allows to display a personalized Welcome message.
The Web Part can be used with Windows WSS 3.0, MOSS 2007, Sharepoint 2010 and Sharepoint 2013.

Prerequisites

Before you attempt to install the solutions you need to make sure that you have the following installed on your server(s):

- Microsoft Office SharePoint Server 2007, WSS 3.0 , Sharepoint 2010 or Sharepoint 2013.

Installation

Manual Installation

1. download and unpack the **AEWelcomeWebpart.zip** file.
The ZIP archive contains the AEWelcomeWebpart.dll and the AEWelcome.webpart files.
2. drop the AEWelcomeWebpart.dll into the GAC of your Sharepoint server (c:\windows\assembly).
3. add the following line to the "<SafeControls>" section of your Web.Config file.
Please make sure that the line is added as one single line (no line breaks):

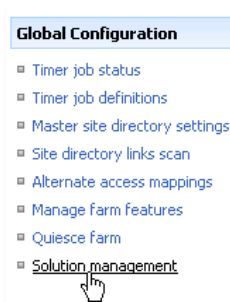
```
<SafeControl Assembly="AEWelcomeWebpart, Version=1.0.0.0, Culture=neutral, PublicKeyToken=f3a7b387994af479"
Namespace="AEWelcomeWebpart" TypeName="*" Safe="True" SafeAgainstScript="False" />
```

from the top site go to "Site Actions/Site Settings/Modify All Site Settings/Galleries/Web Parts"

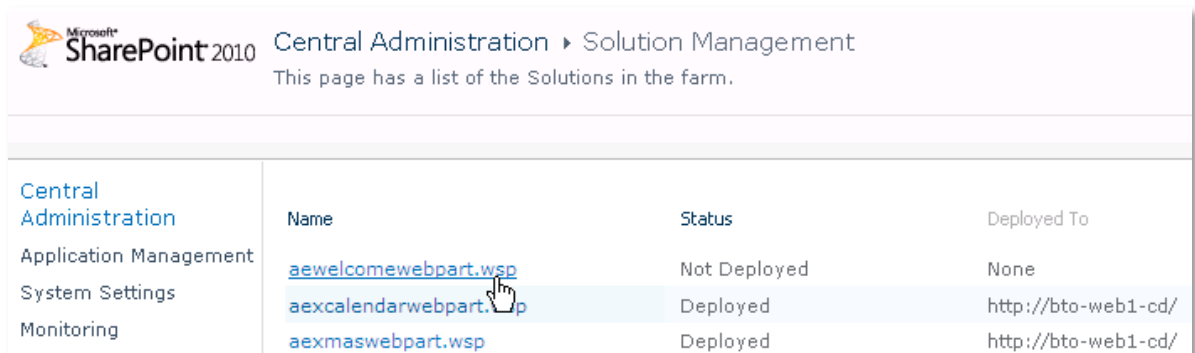
4. use the "Upload" menu option to upload the AEWelcome.webpart file.

Automatic Installation

1. Unpack the **AEWelcomeWebpart.wsp** and **Install.bat** (**install2010.bat** for Sharepoint 2010) files from the Zip Archive and place the 2 files onto your Sharepoint Server.
2. Add the Solution by either running **Install.bat** or manually entering:
stsadm -o addsolution -filename AEWelcomewebpart.wsp
3. Deploy the solution by navigating with your browser to "Central Administration->Operations->Solution Management":



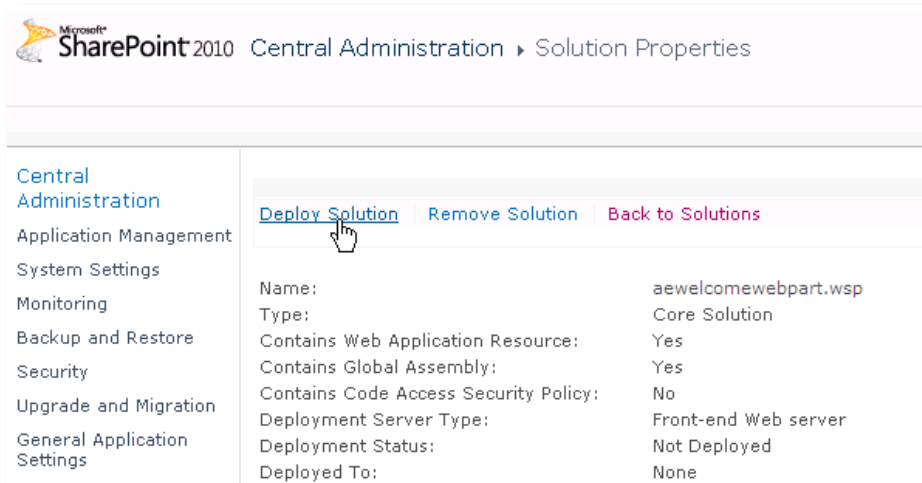
4. You should now see the **AEWelcomeWebpart.wsp** in the farm's solution store:



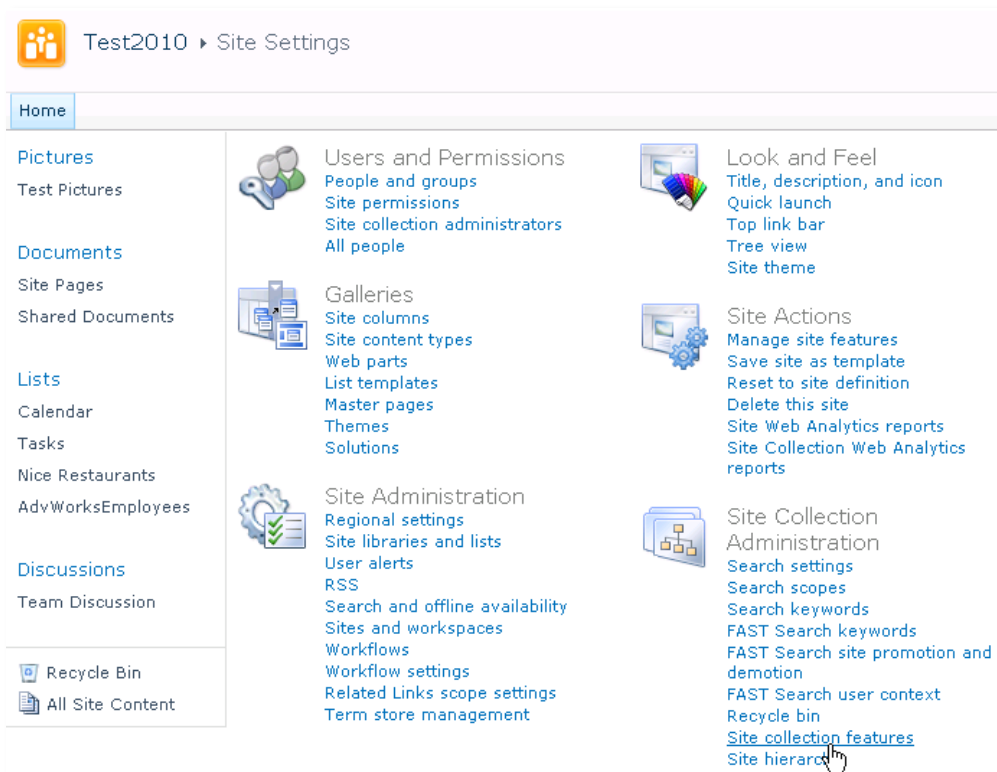
Microsoft SharePoint 2010 Central Administration > Solution Management
This page has a list of the Solutions in the farm.

	Name	Status	Deployed To
Central Administration			
Application Management	aewelcomewebpart.wsp	Not Deployed	None
System Settings	aexcalendarwebpart.wsp	Deployed	http://bto-web1-cd/
Monitoring	aexmaswebpart.wsp	Deployed	http://bto-web1-cd/

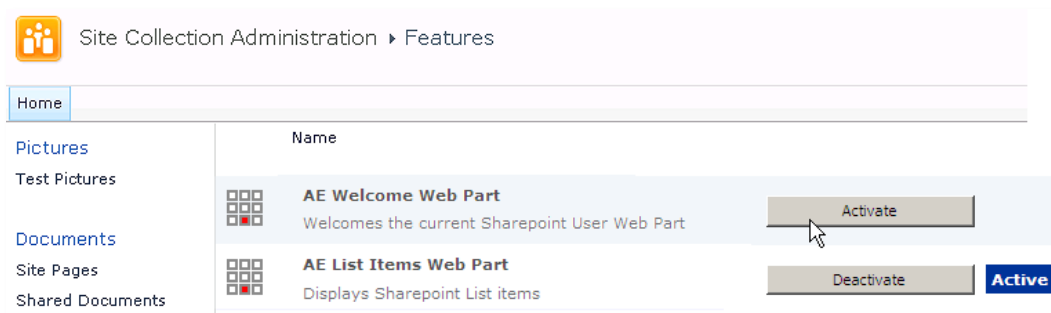
Click on "**AEWelcomeWebpart.wsp**" to deploy the solution:



5. Proceed to activate the feature by navigating to the “Site Actions/Site Settings” page in your top-level site:



Choose “Site collection features” to navigate to the Site Collection Features page:



Activate the “AE Welcome Web Part” feature

Adding the Web Part to a Page

Navigate to a page where you would like to place the web part and choose "*Site Actions/Edit Page*"

Add the web part to the appropriate zone. The web part is listed in the "**Amrein Engineering**" gallery section:

