

# EWS Calendar Web Part

Sharepoint 2010 Version

© AMREIN ENGINEERING AG

Instructions Version 1.1

January 2012

Calendar Web Part

September, 2009						Expand All	Collapse All	Day	Week	Month
Sunday	Monday	Tuesday	Wednesday	Thursday	Friday					
30	31	1	2	3	4					
BluesToBop Lugano	9:30 AM Team Meeting	4:00 PM Project X-5 Q&A		7:30 PM Bruno Glaus	11:00 AM He					
6	7	8	9	10	11					
9:00 AM Test Out of Office	9:00 AM Clean Up (Room cannot be booked during this time)	8:00 PM Test Tentative 8:30 PM Rehearsal	10:00 AM CEO Brunch	7:00 PM VASK	9:00 AM Bü bit au					
13	14	15	16	17	18					
4:00 PM Weekly Talk	9:30 AM IT Planning 7:00 PM Gig Donadio	7:30 PM Sales Meeting		8:00 PM Bruno Glaus	A					
20	21	22	23	24	25					
			Test AMREIN ENGINEERING Exchange Calendar Web Part							
27	28	29	30	1	2					
Gig Bruno	9:30 AM Team Meeting									

---

## Description

The Exchange Calendar Web Part displays the appointments of the selected Microsoft Exchange 2007/2010 mailbox(es) in a Sharepoint 2010 calendar.

The Web Part can be used both with Windows Sharepoint 2010 Foundation and 2010 Server.

Please note that the web part cannot display appointments stored in previous versions of Microsoft Exchange Server (Microsoft Exchange 2003 or earlier).

This Web Part requires Windows Sharepoint Server 2010. Please note that an equivalent web part is available for Sharepoint WSS 3.0/MOSS

## Prerequisites

Before you attempt to install the solutions you need to make sure that you have the following installed on your server(s):

- Microsoft SharePoint 2010 Foundation or 2010 Server
- Microsoft .NET 3.5 Framework Service Pack 1 or higher
- Microsoft Exchange Server 2007 or 2010

## Installation

### Manual Installation

1. download and unpack the **AEXCalendarWebpart.zip** file.  
The ZIP archive contains the **AEXCalendarWebpart.dll**, the **EWSPproxies.dll**, the **Microsoft.Exchange.WebServices.dll** and the **AEXCalendar.webpart** files.
2. drop the 3 DLL files either into the SPS web application BIN directory or into the GAC of your Sharepoint server (c:\windows\assembly).
3. add the following line to the "<SafeControls>" section of your Web.Config file.  
Please make sure that the line is added as one single line (no line breaks):

```
<SafeControl Assembly="AEXCalendarWebpart, Version=1.0.0.0, Culture=neutral,
PublicKeyToken=9d204ffd3412b95a" Namespace="AEXCalendarWebpart" TypeName="*" Safe="True" />
```

4. from the top site go to "Site Actions/Site Settings/Modify All Site Settings/Galleries/Web Parts"
5. use the "Upload" menu option to upload the **AEXCalendar.webpart** file.

### Automatic Installation

1. Unpack the **AEXCalendarWebpart.wsp** and **Install.bat** files from the Zip Archive and place the 2 files onto your Sharepoint Server.
2. Add the Solution by either running **Install.bat** or manually entering:  
`stsadm -o addsolution -filename AEXCalendarWebpart.wsp`
3. Deploy the solution by navigating with your browser to "Central Administration > System Settings > Farm Management > Manage farm solutions":

Microsoft SharePoint 2010 Central Administration ▶ System Settings

- Central Administration
- Application Management
- System Settings**
- Monitoring
- Backup and Restore
- Security
- Upgrade and Migration

- Servers**  
Manage servers in this farm | Manage services on server
- E-Mail and Text Messages (SMS)**  
Configure outgoing e-mail settings | Configure incoming e-mail settings | Configure mobile
- Farm Management**  
Configure alternate access mappings | Manage farm features | Manage farm solutions | Manage user solutions | Configure privacy options | Configure cross-firewall access zone

4. You should now see the **AEXCalendarWebpart.wsp** in the farm's solution store:

Microsoft SharePoint 2010 Central Administration ▶ Solution Management

This page has a list of the Solutions in the farm.

Name	Status	Deployed To
<a href="#">aegooglemapwebpart.wsp</a>	Not Deployed	None
<a href="#">aestaffdirectorywebpart.wsp</a>	Deployed	http://bto-web1-cd/
<a href="#">aesurveywebpart.wsp</a>	Deployed	http://bto-web1-cd/
<a href="#">aeuserspotlightwebpart.wsp</a>	Deployed	http://bto-web1-cd/
<a href="#">aexbirthdaywebpart.wsp</a>	Deployed	http://bto-web1-cd/
<a href="#">aexcalendarwebpart.wsp</a>	Not Deployed	None

Click on "AEXCalendarWebpart.wsp" to deploy the solution:

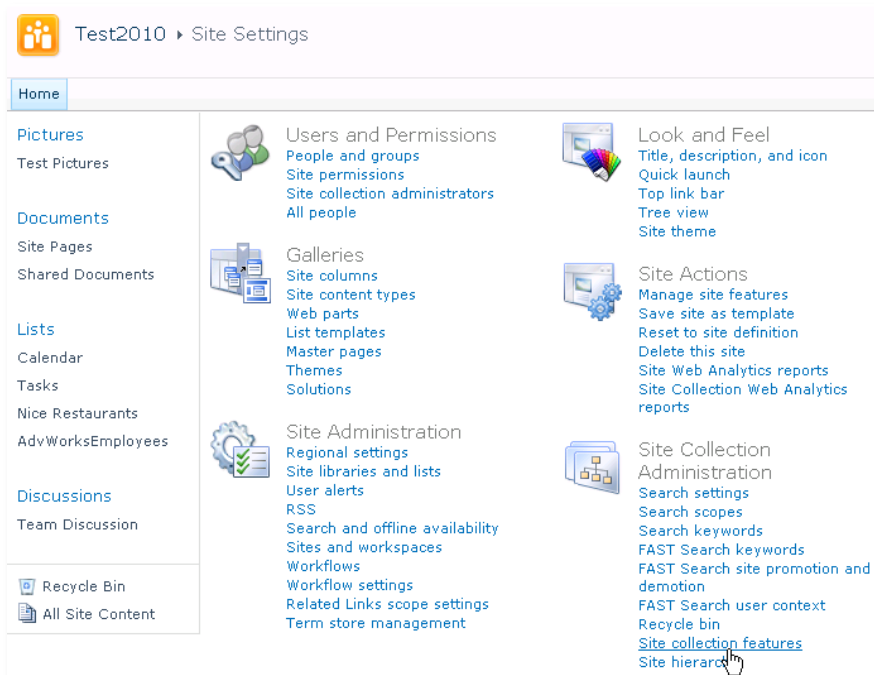
Microsoft SharePoint 2010 Central Administration ▶ Solution Properties

- Central Administration
- Application Management
- System Settings
- Monitoring
- Backup and Restore
- Security
- Upgrade and Migration
- General Application Settings

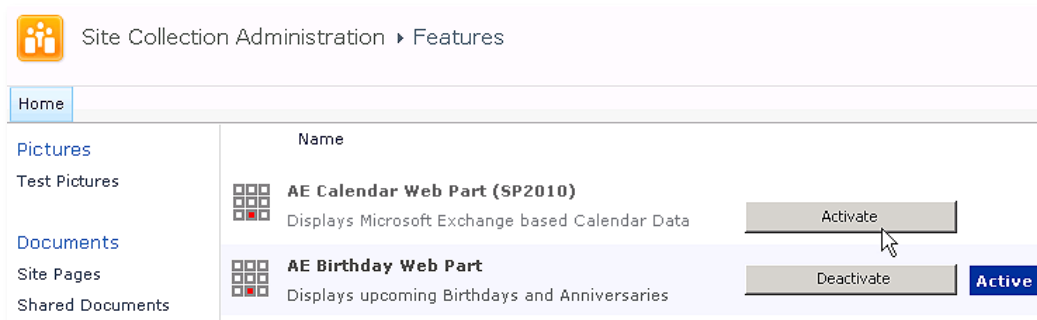
[Deploy Solution](#) | [Remove Solution](#) | [Back to Solutions](#)

Name:	aexcalendarwebpart.wsp
Type:	Core Solution
Contains Web Application Resource:	Yes
Contains Global Assembly:	Yes
Contains Code Access Security Policy:	No
Deployment Server Type:	Front-end Web server
Deployment Status:	Not Deployed
Deployed To:	None

5. Proceed to activate the feature by navigating to the "Site Actions/Site Settings" page in your top-level site:



Choose "Site collection features" to navigate to the Site Collection Features page:

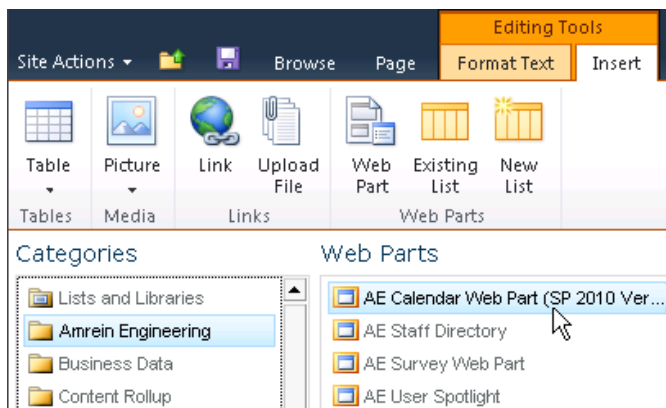


Activate the "AE Staff Directory Web Part" feature

## Adding the Web Part to a Page

Navigate to a page where you would like to place the web part and choose "Site Actions/Edit Page"

- Add the web part to the appropriate zone. The web part is listed in the "Amrein Engineering" gallery section :



## Web Part Configuration

Configure the following Web Part properties in the Web Part Editor "Miscellaneous" pane section as needed:

The screenshot shows the 'Miscellaneous' pane of the Web Part Editor. It contains the following fields and values:

- User ID: fred
- User Password: \*\*\*\*\*
- Exchange Server URL: http://exchange.yoursite.com
- Calendar(s): RoomGeneva;fred
- Mail Domain: yourmaildomain.com
- Time Zone Offset: 0
- Busy Type Colors: #F0F0F0;#BAF2F1;#0088FF;#E
- License Key: (empty)

- **User ID:**  
enter the name of the Windows account under which the calendar data will be fetched from the Exchange server.
- **User Password:** enter the password of the above user account
- **Exchange Server URL:**  
enter the web domain name of your Exchange web frontend server (do also include the leading "http://" or "https://"). This typically is the same address as your Outlook Web Access (OWA) URL but without "/owa". **Please do NOT enter the trailing "/EWS" or the trailing "/OWA".**

Examples:

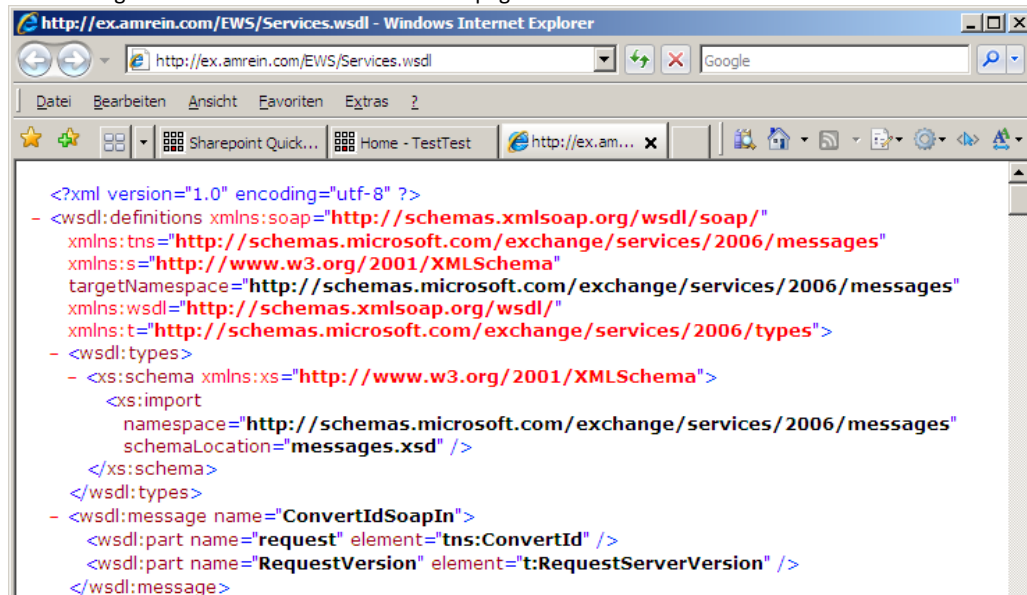
<https://yourserver.com>  
<http://yourserver.com>

Examples with yourserver.yourdomain:

[https:// yourserver. yourdomain.com](https://yourserver.yourdomain.com)  
<http:// yourserver. yourdomain.com>

You can **check the validity of the above URL** with your browser by entering e.g.  
[http\(s\)://yourserver.com/EWS/Exchange.asmx](http(s)://yourserver.com/EWS/Exchange.asmx)

The Exchange Server should now return an XML page:



- **Mailbox Calendar(s):**  
 enter the mailbox name(s) of the calendar(s) to be displayed (separate the names with semicolons).  
 Use the {uid} placeholder to inject the current user's name.  
 You can alternatively use a web part connection to select the mailbox calendar to be displayed.

Example:

**john;**{uid};Room707

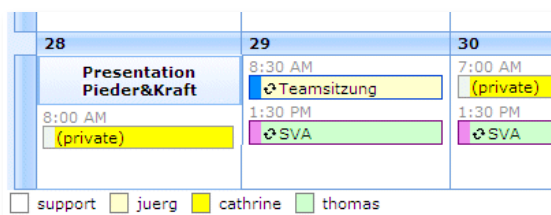
**Calendar Color Coding:**

You can optionally individually color the calendar entries for each calendar user by adding the desired color (preceded by a colon) to each mailbox name as follows:

Example:

**john:yellow;Room707:#CCFFCC;harry:red**

Enter either the HTML color names (as eg. "red" etc.) or use hexadecimal RRGGBB coding (as eg. "#CCFFCC")



- **Public Folder Calendar(s):**  
 enter the public folder name(s) of the calendar(s) to be displayed (separate the names with semicolons).

Example:

**Meeting Room 101**

- **Mail Domain:**  
 enter the domain name of your Exchange mail server. This typically corresponds with the part of your mail addresses right to the @ character.
- **Time Zone Offset:**  
 Enter the optional desired time zone offset in minutes

- 
- **Busy Type Colors:**  
Enter the desired Busy Type color codings (either as HTML color names or #RRGGBB values) in the following order: free;tentative;busy;out of office.  
The default values reflect the standard Microsoft Outlook color settings.
  - **Default View:** choose the desired startup calendar view (Month, Week or Day)
  - **Export to CSV:** Show/hide the "Export" button for exporting the calendar items to Excel/CSV.
  - **CSV Separator:** Enter the desired CSV field separator character (Default=Comma). Specify a semicolon in countries which use the comma as a decimal separator.
  - **Cache Retention Time:** Enter the public folder cache retention time in minutes
  - **License Key:** enter your Product License Key (as supplied after purchase of the "Staff Directory Web Part" license key). Leave this field empty if you are using the free 30 day evaluation version or if you choose one of the License Activation described below.

## License Activation

You have the following 3 options to enter your License Key:

1. Enter the License Key into the corresponding "License Key" field in the web part configuration pane (See Description above).

**2. WSP Solution Deployment:**

Add the **License.txt** file (as supplied by AMREIN ENGINEERING after having purchased a license) to the Solution at the following location:

```
c:\Program Files\Common Files\Microsoft Shared\Web Server Extensions\14\template\features\AEXCalendarWebpart
```

**3. Manual Deployment:**

Add the License Key to your web.config (typically found at c:\inetpub\wwwroot\wss\virtualdirectories\80) **<appSettings>** section as follows:

```
<appSettings>
.
.
  <add key="AEEC" value="AEEC-x-xxxxx-xxxxx-xx-xx" />
</appSettings>
```

Replace the "x" characters with your actual key values.

Please note that this method requires you to manually add the key to each Sharepoint application.