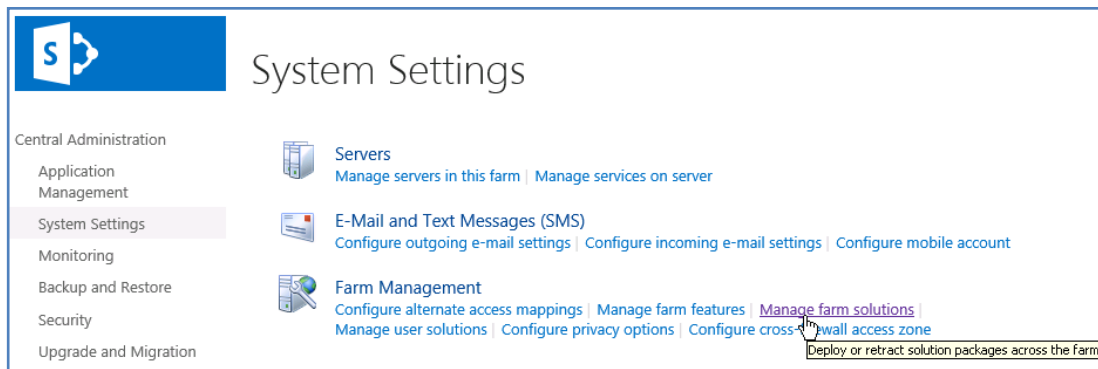


# Web Part Installation Instructions for SharePoint 2013/2016/2019

## Automatic Installation

1. Unpack the **AEXStaffDirectoryWebpart.wsp** and **Install201x.bat** files from the Zip Archive and place the 2 files onto your Sharepoint Server. (where x refers to 2013, 2016 or 2019)
2. Add the Solution by either running **Install201x.bat** or manually entering:  
`stsadm -o addsolution -filename AEXStaffDirectoryWebpart.wsp`
3. Deploy the solution by navigating with your browser to “Central Administration > System Settings > Farm Management > Manage farm solutions”:



4. You should now see the **AEXStaffDirectoryWebpart.wsp** in the farm’s solution store:

The screenshot shows the 'Solution Management' page in SharePoint Central Administration. It displays a table of solutions installed in the farm. The 'aexstaffdirectorywebpart.wsp' solution is highlighted, and a mouse cursor is pointing to it.

Central Administration	Name	Status	Deployed To
Application Management	<a href="#">aetaskrollupwebpart.wsp</a>	Deployed	http://ae-web3-ct:28900/
Application Management	<a href="#">aetwitterenterprisewebpart.wsp</a>	Deployed	http://ae-web3-ct:28900/
System Settings	<a href="#">aexstaffdirectorywebpart.wsp</a>	Not Deployed	None
Monitoring	<a href="#">aexbirthdaywebpart.wsp</a>	Deployed	http://ae-web3-ct:28900/
Backup and Restore	<a href="#">aexcalendarenterprisewebpart.wsp</a>	Deployed	http://ae-web3-ct:28900/

Click on “**aexstaffdirectorywebpart.wsp**” to deploy the solution:

## Solution Properties

Central Administration

Application Management

System Settings

Monitoring

Backup and Restore

Security

Upgrade and Migration

General Application Settings

Apps

Configuration Wizards

[Deploy Solution](#) | [Remove Solution](#) | [Back to Solutions](#)

**Deploy Solution**

Name: aexstaffdirectorywebpart.wsp

Type: Core Solution

Contains Web Application Resource: Yes

Contains Global Assembly: Yes

Contains Code Access Security Policy: No

Deployment Server Type: Front-end Web server

Deployment Status: Deployed

Deployed To: http://ae-web3-ct:28900/

Last Operation Result: Not Deployed

Last Operation Details: None

Last Operation Time: No operation has been performed on the solution.

5. Proceed to activate the feature by navigating to the “Site Actions/Site Settings” page in your top-level Sharepoint site:

## Site Settings

Home Subsite Testblog EDIT LINKS

Home

Documents

Recent

QuickPolls

Ankündigungen

TestDiscussion

Quotes

Videos

Site Pages

Subsites

Subsite

Testblog

Site Contents

EDIT LINKS

Users and Permissions

[People and groups](#)

[Site permissions](#)

[Site collection administrators](#)

[Site app permissions](#)

Web Designer Galleries

[Site columns](#)

[Site content types](#)

[Web parts](#)

[List templates](#)

[Master pages](#)

[Themes](#)

[Solutions](#)

[Composed looks](#)

Site Administration

[Regional settings](#)

[Site libraries and lists](#)

[User alerts](#)

[RSS](#)

[Sites and workspaces](#)

[Workflow settings](#)

[Site Closure and Deletion](#)

[Popularity Trends](#)

[Term store management](#)

[Content and structure](#)

Look and Feel

[Design Manager](#)

[Title, description, and logo](#)

[Device Channels](#)

[Tree view](#)

[Change the look](#)

[Import Design Package](#)

[Navigation](#)

Site Actions

[Manage site features](#)

[Enable search configuration export](#)

[Reset to site definition](#)

[Delete this site](#)

Site Collection Administration

[Recycle bin](#)

[Search Result Sources](#)

[Search Result Types](#)

[Search Query Rules](#)

[Search Schema](#)

[Search Settings](#)

[Search Configuration Import](#)

[Search Configuration Export](#)

[Site collection features](#)

[Site hierarchy](#)

[Search engine optimization settings](#)

Choose “Site collection features” to navigate to the Site Collection Features page:

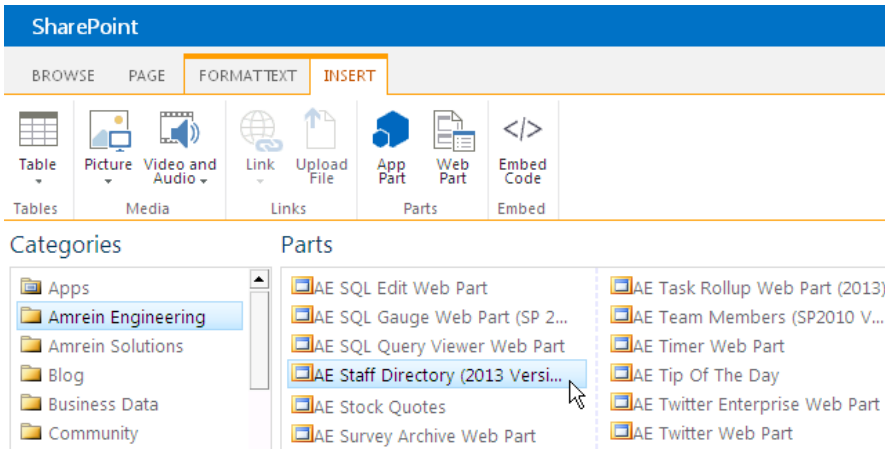
	AE Media Player Web Part Plays back Media files from the selected Sharepoint Document Library (SP2013 Version)	Deactivate	Active
	AE Staff Directory Web Part Displays Sharepoint 2013 User Profile Information as a Staff Directory	Activate	Active
	AE Random Quote Of The Day Web Part Displays a random quote of the day from a selected Sharepoint list (SP2013 Version)	Deactivate	Active
	AE SQL Gauge Web Part Bullet Graph Gauge using data taken from a SQL data source (SP 2013)	Deactivate	Active

Activate the “AE Staff Directory Web Part” feature

## 6. Adding the Web Part to a Page

Navigate to a page where you would like to place the web part and choose "Site Actions/Edit Page"

Select "Web Part" from the "INSERT" tab in the ribbon and add the AE Staff Directory web part to the appropriate zone. The web part is listed in the "Amrein Engineering" gallery section:



## License Activation

You have the following 3 options to enter your License Key:

1. Enter the License Key into the corresponding "License Key" field in the web part configuration pane (See Description above).

2. **WSP Solution Deployment:**

Add the **License.txt** file (as supplied by AMREIN ENGINEERING after having purchased a license) to the Solution at the following location:

SP 2013:

c:\Program Files\Common Files\Microsoft Shared\Web Server Extensions\15\template\features\AEXStaffDirectoryWebpart

SP 2016:

c:\Program Files\Common Files\Microsoft Shared\Web Server Extensions\16\template\features\AEXStaffDirectoryWebpart

SP 2019:

c:\Program Files\Common Files\Microsoft Shared\Web Server Extensions\16\template\features\AEXStaffDirectoryWebpart

3. **Manual Deployment:**

Add the License Key to your web.config (typically found at c:\inetpub\wwwroot\wss\virtualdirectories\80) <appSettings> section as follows:

```
<appSettings>
<add key="AESD" value="AESD-x-xxxxx-xxxxx-xx-xx" />
</appSettings>
```

Replace the "x" characters with your actual key values.

Please note that this method requires you to manually add the key to each Sharepoint application.